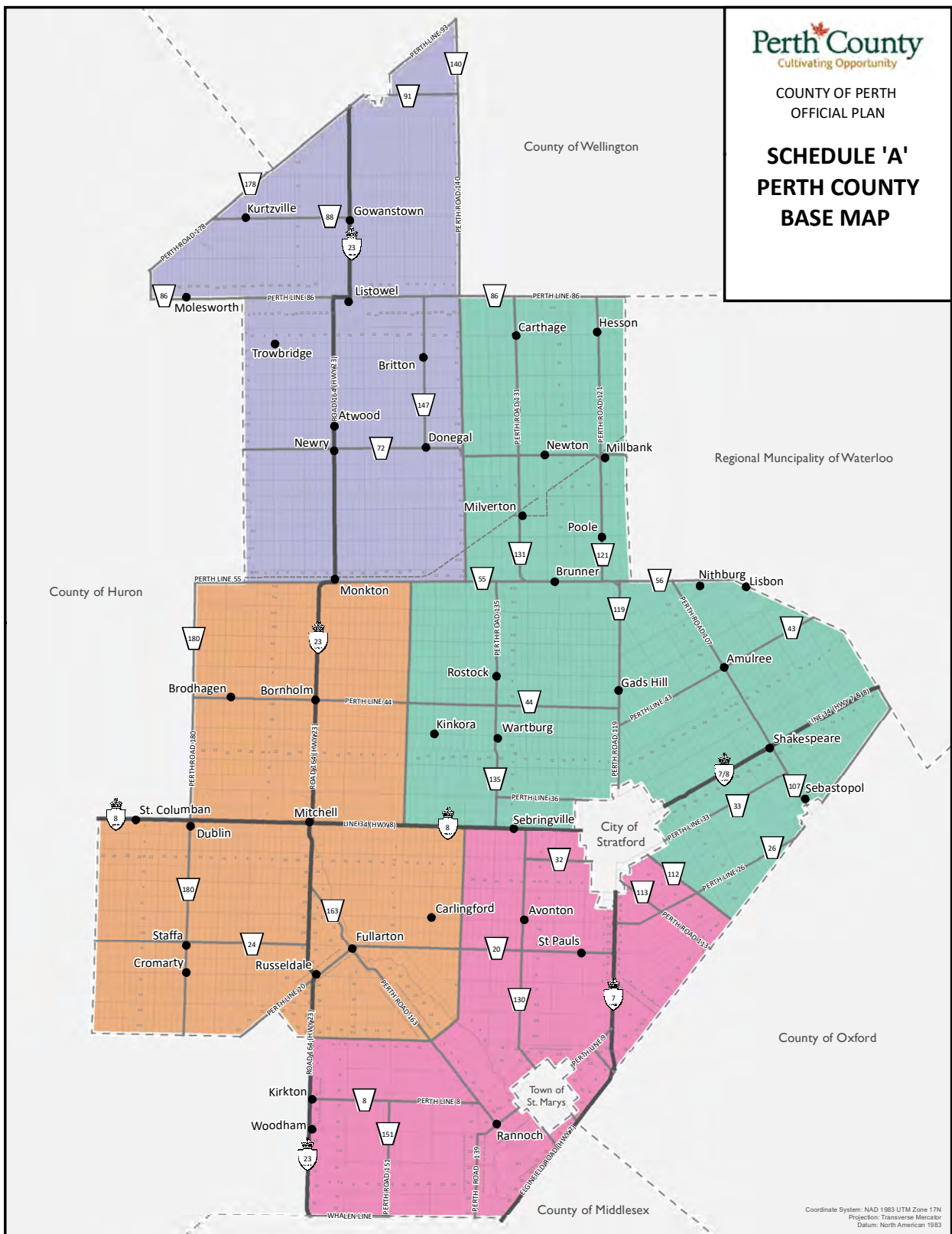


**SCHEDULE 'A'
PERTH COUNTY
BASE MAP**



Coordinate System: NAD 1983 UTM Zone 17N
Projection: Transverse Mercator
Datum: North American 1983

LEGEND

Local Municipality

- Municipality of North Perth
- Township of Perth East
- Township of Perth South
- Municipality of West Perth

Additional Features

- Settlement Areas
- Provincial Highway
- County Road
- Former Railway Line
- Lots and Concessions
- Municipal Boundary

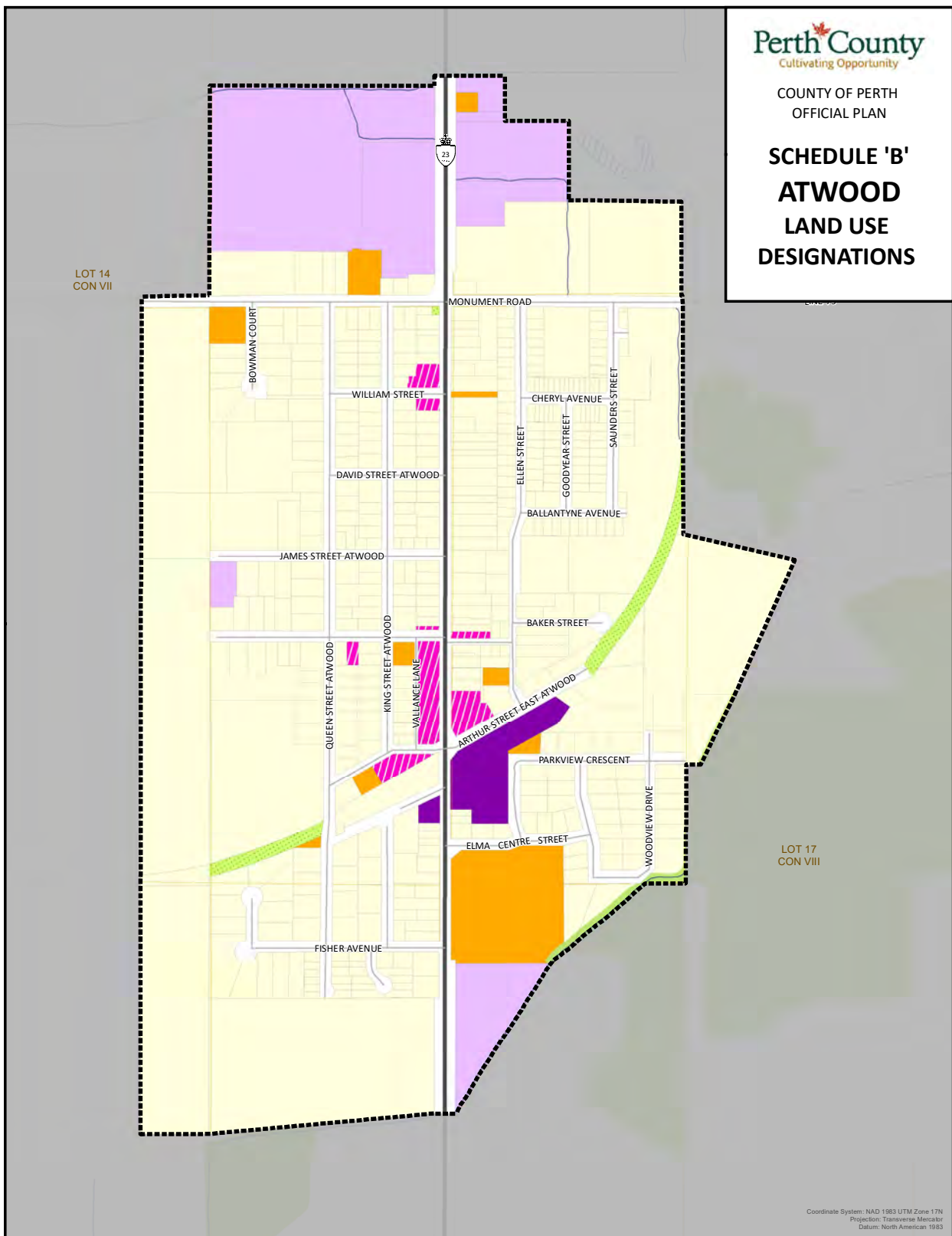
0 2.5 5 7.5 km
Scale 1:250,000
1 cm = 3 km



This schedule forms a part of the County of Perth Official Plan and must be read in conjunction with applicable policies of the Plan. For accurate reference recourse should be had to the original document and amendments hereto. The County of Perth does not warrant the accuracy, completeness, content, or currency of the information provided. Contains information licensed under the Open Government Licence – Ontario. This is not a legal Plan of Survey. © The Corporation of Perth County, 2024.

This map may incorporate data under license from:
© King's Printer for Ontario, 2024
© Maitland Valley Conservation Authority, 2024
© Upper Thames River Conservation Authority, 2024
© Grand River Conservation Authority, 2024
© Ausable Bayfield Conservation Authority, 2024

**SCHEDULE 'B'
ATWOOD
LAND USE
DESIGNATIONS**



Coordinate System: NAD 1983 UTM Zone 17N
Projection: Transverse Mercator
Datum: North American 1983

LEGEND

Land Use Designations

- Open Space
- Natural Environment
- Neighbourhood
- Urban Mixed Use
- Corridor Commercial
- Employment
- Institutional

Additional Features

- Provincial Highway
- Local Road
- Watercourse
- Waterbody
- Settlement Area Boundary
- Parcels
- Lots and Concessions

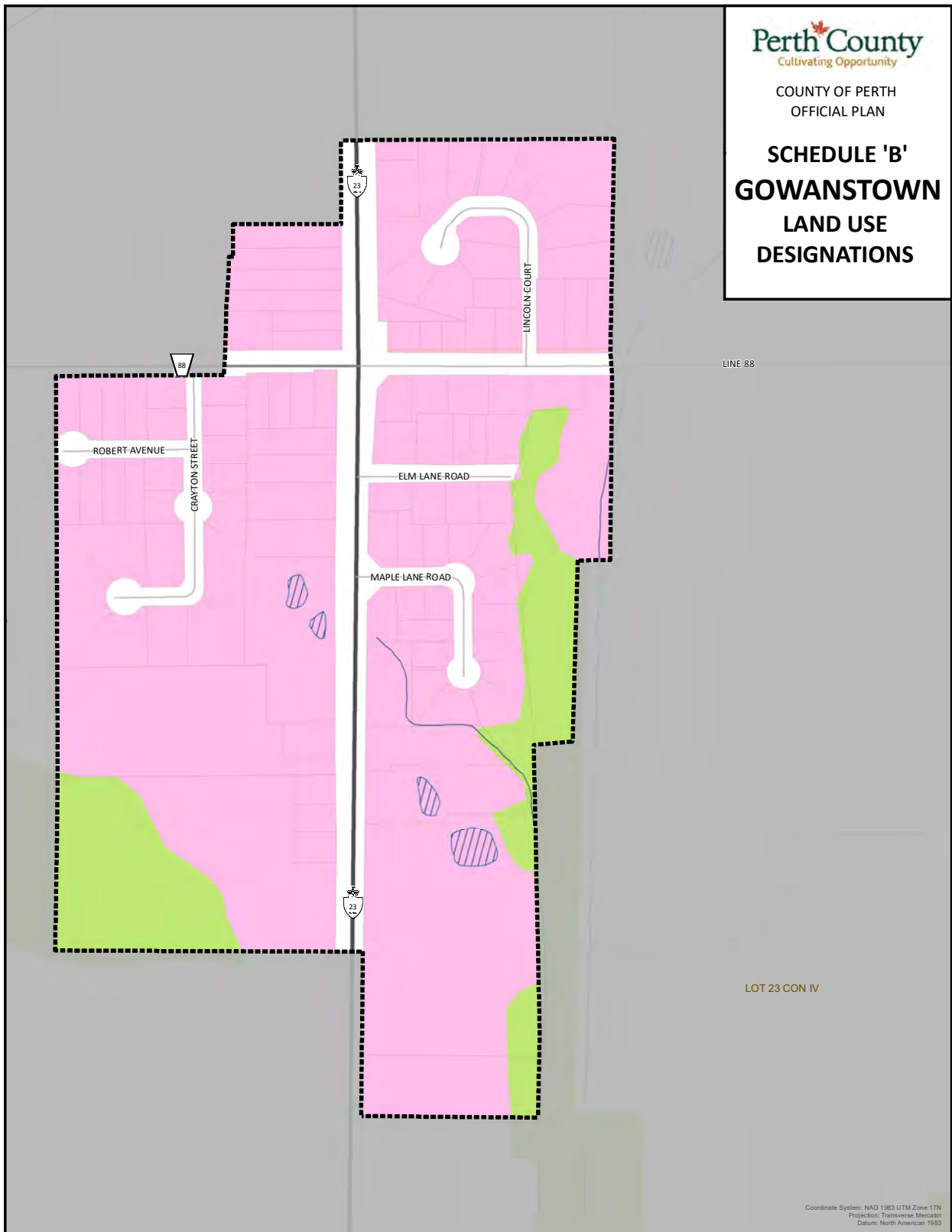
0 75 150 225 m
Scale 1:6,500
1 cm = 65 m



This schedule forms a part of the County of Perth Official Plan and must be read in conjunction with applicable policies of the Plan. For accurate reference recourse should be had to the original document and amendments hereto. The County of Perth does not warrant the accuracy, completeness, content, or currency of the information provided. Contains information licensed under the Open Government Licence – Ontario. This is not a legal Plan of Survey. © The Corporation of Perth County, 2024.

This map may incorporate data under license from:
© King's Printer for Ontario, 2024
© Maitland Valley Conservation Authority, 2024
© Upper Thames River Conservation Authority, 2024
© Grand River Conservation Authority, 2024
© Ausable Bayfield Conservation Authority, 2024

SCHEDULE 'B'
GOWANSTOWN
LAND USE
DESIGNATIONS



Coordinate System: NAD 1983 UTM Zone 17N
Projection: Transverse Mercator
Datum: North American 1983

LEGEND

Land Use Designations

- Natural Environment
- Village

Additional Features

- Provincial Highway
- County Road
- Local Road
- Watercourse
- Waterbody
- Settlement Area Boundary
- Parcels
- Lots and Concessions

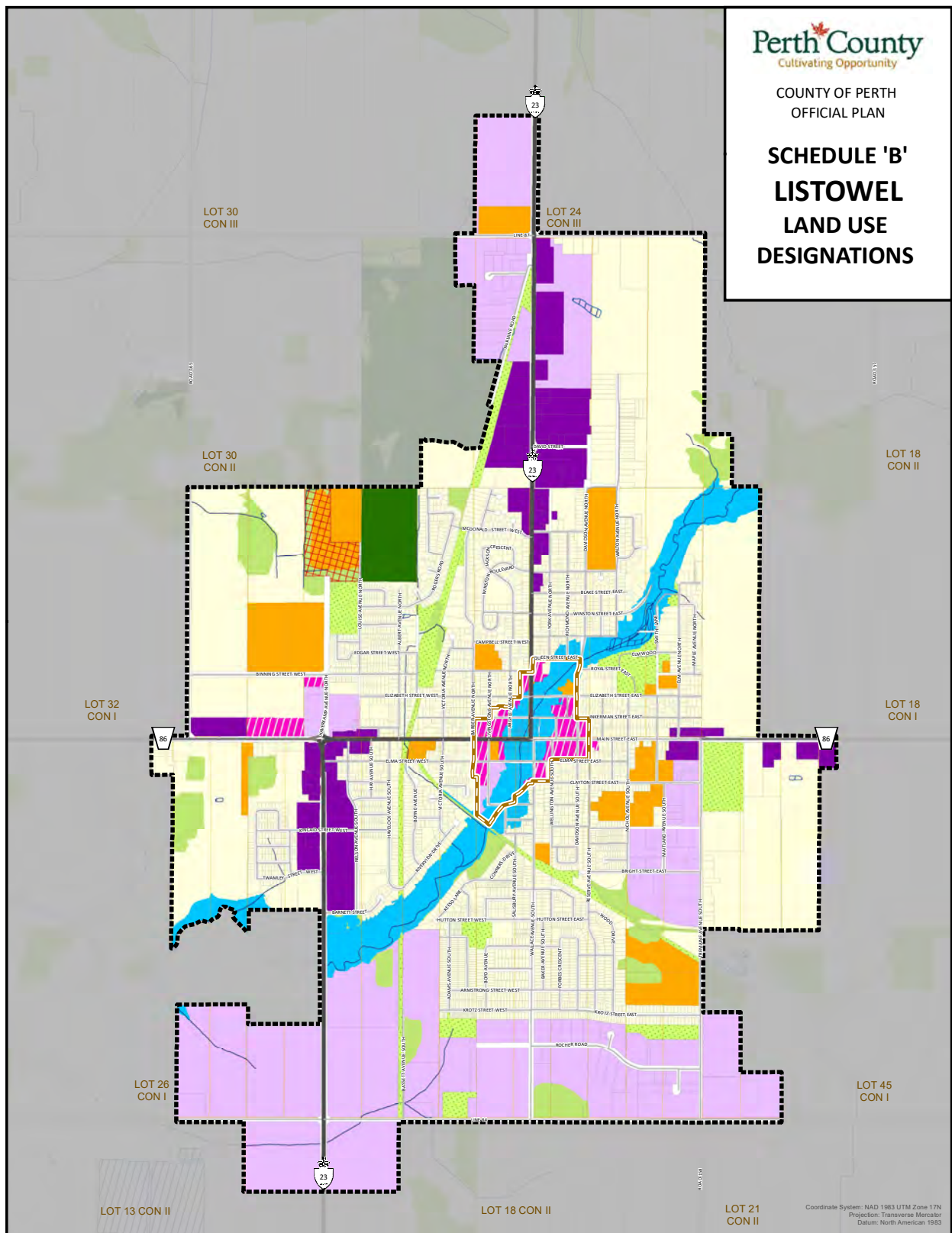
0 40 80 120 m
Scale 1:4,000
1 cm = 40 m



This schedule forms a part of the County of Perth Official Plan and must be read in conjunction with applicable policies of the Plan. For accurate reference recourse should be had to the original document and amendments hereto. The County of Perth does not warrant the accuracy, completeness, content, or currency of the information provided. Contains information licensed under the Open Government Licence – Ontario. This is not a legal Plan of Survey. © The Corporation of Perth County, 2024.

This map may incorporate data under license from:
© King's Printer for Ontario, 2024
© Maitland Valley Conservation Authority, 2024
© Upper Thames River Conservation Authority, 2024
© Grand River Conservation Authority, 2024
© Ausable Bayfield Conservation Authority, 2024

**SCHEDULE 'B'
LISTOWEL
LAND USE
DESIGNATIONS**



LEGEND

Land Use Designations

- Open Space
- Natural Environment
- Recreation
- Neighbourhood
- Urban Mixed Use

- Corridor Commercial
- Employment
- Institutional
- Floodplain

Additional Features

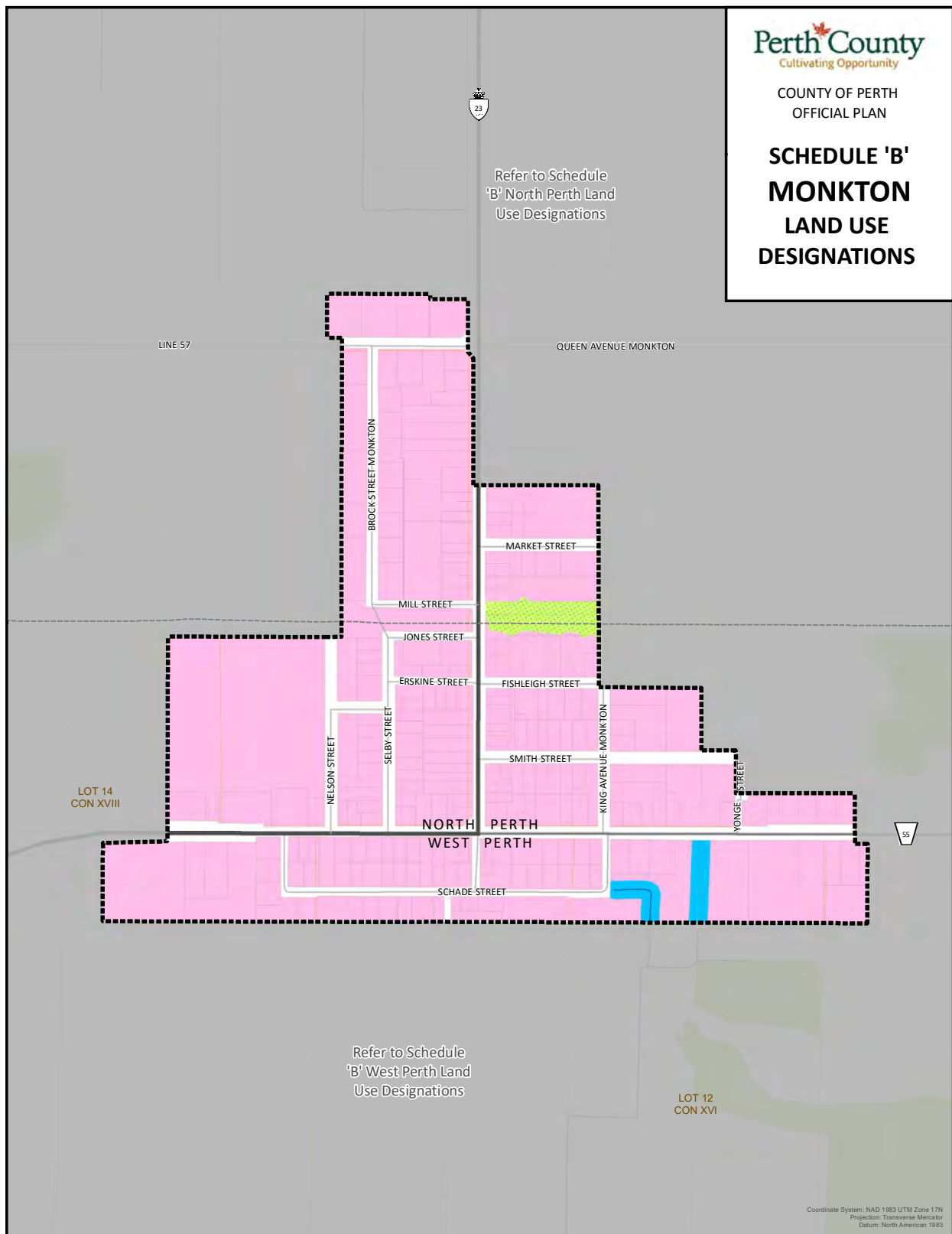
- Provincial Highway
- County Road
- Local Road
- Watercourse
- Strategic Growth Area
- Waterbody
- Settlement Area Boundary
- Closed Landfill
- Parcels
- Lots and Concessions

0 240 480 720 m
Scale 1:20,000
1 cm = 200 m

This schedule forms a part of the County of Perth Official Plan and must be read in conjunction with applicable policies of the Plan. For accurate reference recourse should be had to the original document and amendments hereto. The County of Perth does not warrant the accuracy, completeness, content, or currency of the information provided. Contains information licensed under the Open Government Licence – Ontario. This is not a legal Plan of Survey. © The Corporation of Perth County, 2024.


This map may incorporate data under license from:
© King's Printer for Ontario, 2024
© Maitland Valley Conservation Authority, 2024
© Upper Thames River Conservation Authority, 2024
© Grand River Conservation Authority, 2024
© Ausable Bayfield Conservation Authority, 2024

SCHEDULE 'B'
MONKTON
LAND USE
DESIGNATIONS





LEGEND

Land Use Designations

-  Open Space
-  Village
-  Floodplain

Additional Features

-  Provincial Highway
-  County Road
-  Local Road
-  Former Railway Line
-  Watercourse
-  Settlement Area Boundary
-  Parcels
-  Lots and Concessions

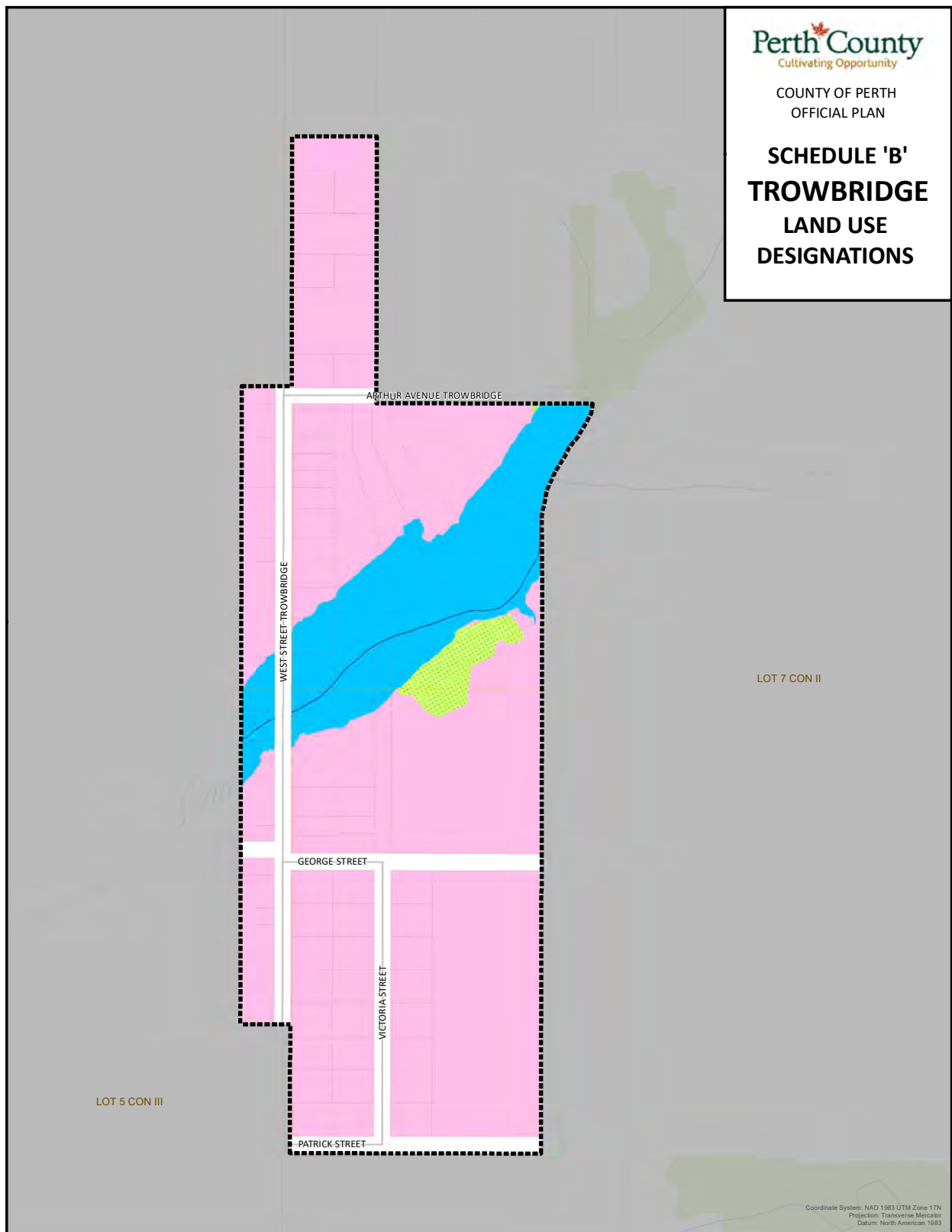
0 70 140 210 m
Scale 1:6,000
1 cm = 60 m



This schedule forms a part of the County of Perth Official Plan and must be read in conjunction with applicable policies of the Plan. For accurate reference recourse should be had to the original document and amendments hereto. The County of Perth does not warrant the accuracy, completeness, content, or currency of the information provided. Contains information licensed under the Open Government Licence – Ontario. This is not a legal Plan of Survey. © The Corporation of Perth County, 2024.

This map may incorporate data under license from:
© King's Printer for Ontario, 2024
© Maitland Valley Conservation Authority, 2024
© Upper Thames River Conservation Authority, 2024
© Grand River Conservation Authority, 2024
© Ausable Bayfield Conservation Authority, 2024

**SCHEDULE 'B'
TROWBRIDGE
LAND USE
DESIGNATIONS**



LEGEND

Land Use Designations

- Open Space
- Village
- Floodplain

Additional Features

- Local Road
- Watercourse
- Waterbody
- Settlement Area Boundary
- Parcels
- Lots and Concessions

0 50 100 150 m
Scale 1:4,500
1 cm = 45 m



This schedule forms a part of the County of Perth Official Plan and must be read in conjunction with applicable policies of the Plan. For accurate reference recourse should be had to the original document and amendments hereto. The County of Perth does not warrant the accuracy, completeness, content, or currency of the information provided. Contains information licensed under the Open Government Licence – Ontario. This is not a legal Plan of Survey. © The Corporation of Perth County, 2024.

This map may incorporate data under license from:
© King's Printer for Ontario, 2024
© Maitland Valley Conservation Authority, 2024
© Upper Thames River Conservation Authority, 2024
© Grand River Conservation Authority, 2024
© Ausable Bayfield Conservation Authority, 2024

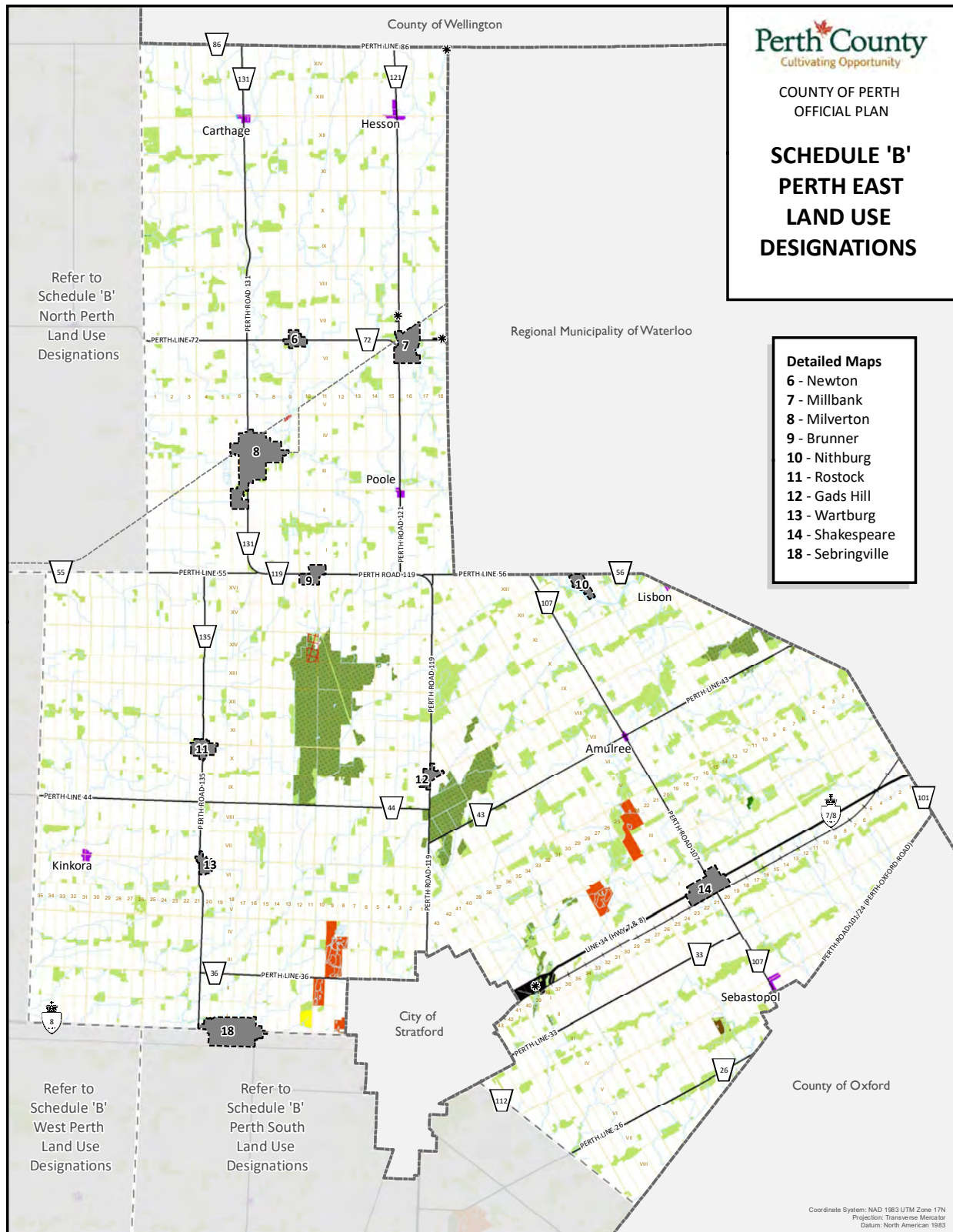
**SCHEDULE 'B'
PERTH EAST
LAND USE
DESIGNATIONS**

Refer to
Schedule 'B'
North Perth
Land Use
Designations

Regional Municipality of Waterloo

Detailed Maps

- 6 - Newton
- 7 - Millbank
- 8 - Milverton
- 9 - Brunner
- 10 - Nithburg
- 11 - Rostock
- 12 - Gads Hill
- 13 - Wartburg
- 14 - Shakespeare
- 18 - Sebringville



Refer to
Schedule 'B'
West Perth
Land Use
Designations

Refer to
Schedule 'B'
Perth South
Land Use
Designations

County of Oxford

Coordinate System: NAD 1983 UTM Zone 17N
Projection: Transverse Mercator
Datum: North American 1983

LEGEND

Land Use Designations

	Agriculture		Natural Environment
	Hamlet		Urban Fringe
	Mineral Aggregate		Open Landfill
	Open Space		Mobile Home Parks
	Recreation		Rural Cluster
	Natural Environment – Provincially Significant Wetlands		

Additional Features

	Provincial Highway		Refer to Detailed Maps
	County Road		Waterbody
	Railway/ Right of Way		Closed Landfill
	Former Railway Line		Lots and Concessions
	Watercourse		Municipal Boundary

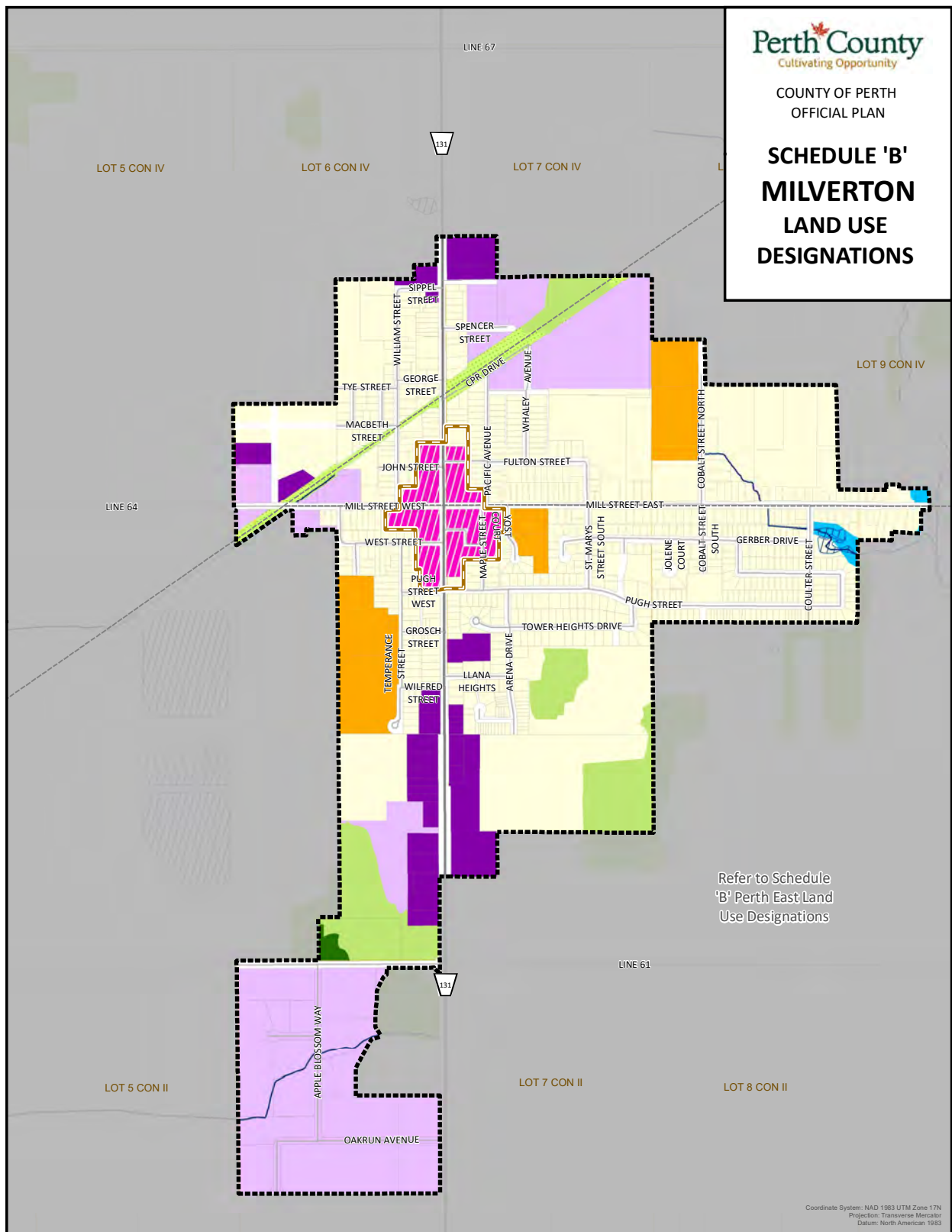
0 1.5 3 4.5 km
Scale 1:135,000
1 cm = 1 km



This schedule forms a part of the County of Perth Official Plan and must be read in conjunction with applicable policies of the Plan. For accurate reference recourse should be had to the original document and amendments hereto. The County of Perth does not warrant the accuracy, completeness, content, or currency of the information provided. Contains information licensed under the Open Government Licence – Ontario. This is not a legal Plan of Survey. © The Corporation of Perth County, 2024.

This map may incorporate data under license from:
© King's Printer for Ontario, 2024
© Maitland Valley Conservation Authority, 2024
© Upper Thames River Conservation Authority, 2024
© Grand River Conservation Authority, 2024
© Ausable Bayfield Conservation Authority, 2024

**SCHEDULE 'B'
MILVERTON
LAND USE
DESIGNATIONS**



Refer to Schedule
'B' Perth East Land
Use Designations

Coordinate System: NAD 1983 UTM Zone 17N
Projection: Transverse Mercator
Datum: North American 1983

LEGEND

Land Use Designations

- Open Space
- Natural Environment
- Recreation
- Neighbourhood
- Urban Mixed Use

- Corridor Commercial
- Employment
- Institutional
- Floodplain

Additional Features

- County Road
- Local Road
- Watercourse
- Former Railway Line

- Strategic Growth Area
- Settlement Area Boundary
- Closed Landfill
- Waterbody
- Lots and Concessions
- Parcels

0 130 260 390 m
Scale 1:11,000
1 cm = 110 m

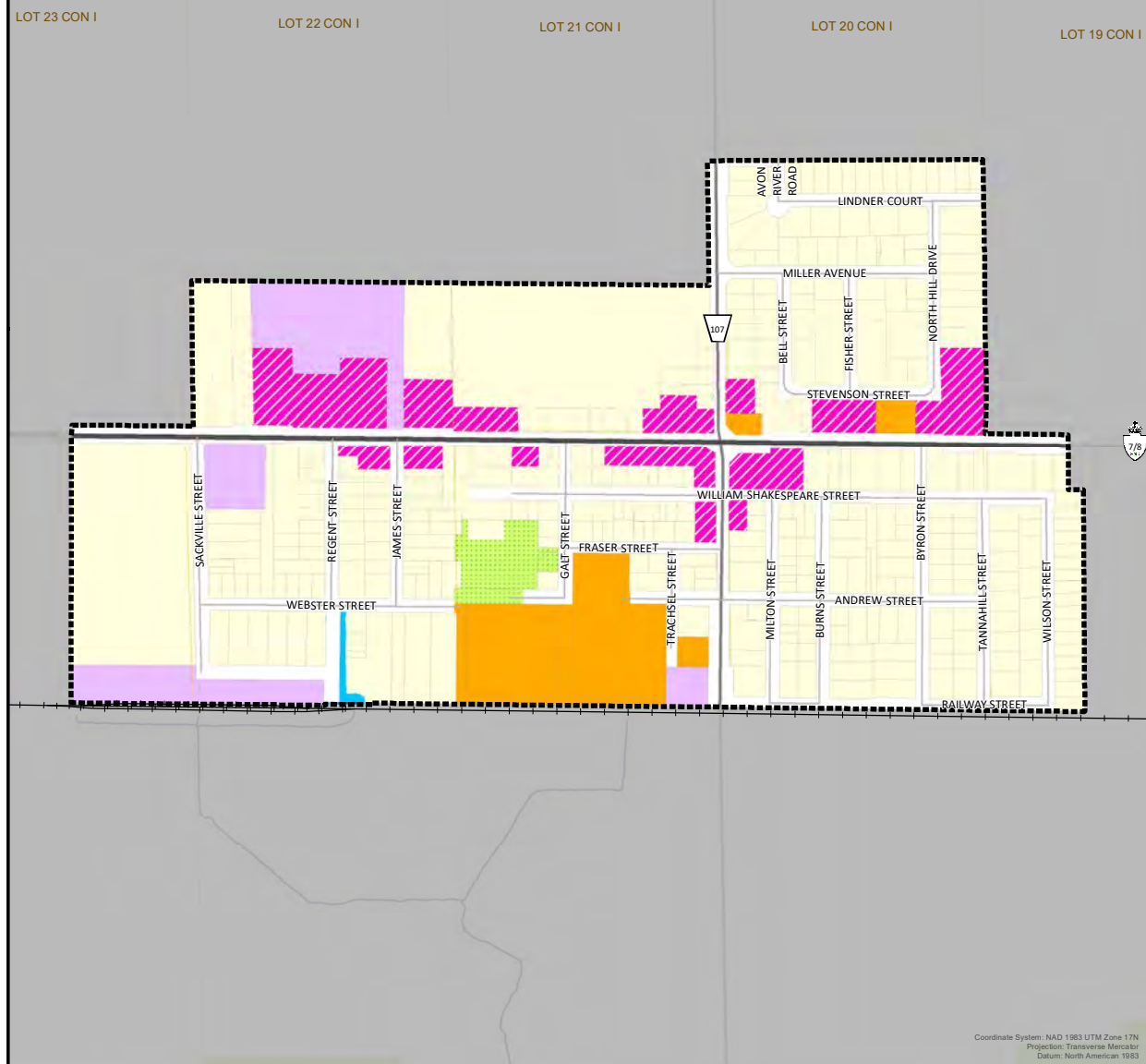


This schedule forms a part of the County of Perth Official Plan and must be read in conjunction with applicable policies of the Plan. For accurate reference recourse should be had to the original document and amendments hereto. The County of Perth does not warrant the accuracy, completeness, content, or currency of the information provided. Contains information licensed under the Open Government Licence – Ontario. This is not a legal Plan of Survey. © The Corporation of Perth County, 2024.

This map may incorporate data under license from:
© King's Printer for Ontario, 2024
© Maitland Valley Conservation Authority, 2024
© Upper Thames River Conservation Authority, 2024
© Grand River Conservation Authority, 2024
© Ausable Bayfield Conservation Authority, 2024

SCHEDULE 'B'
SHAKESPEARE
LAND USE
DESIGNATIONS

Refer to Schedule
'B' Perth East Land
Use Designations



LEGEND

Land Use Designations



Floodplain



Open Space

Neighbourhood



Urban Mixed Use



Employment



Institutional

Additional Features



Provincial Highway



County Road

Local Road

Watercourse

Railway/ Right of Way

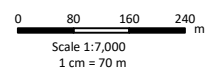


■ Settlement Area Boundary



Lots and Concessions

Parcels



This schedule forms a part of the County of Perth Official Plan and must be read in conjunction with applicable policies of the Plan. For accurate reference recourse should be had to the original document and amendments hereto. The County of Perth does not warrant the accuracy, completeness, content, or currency of the information provided. Contains information licensed under the Open Government Licence – Ontario. This is not a legal Plan of Survey. © The Corporation of Perth County, 2024.

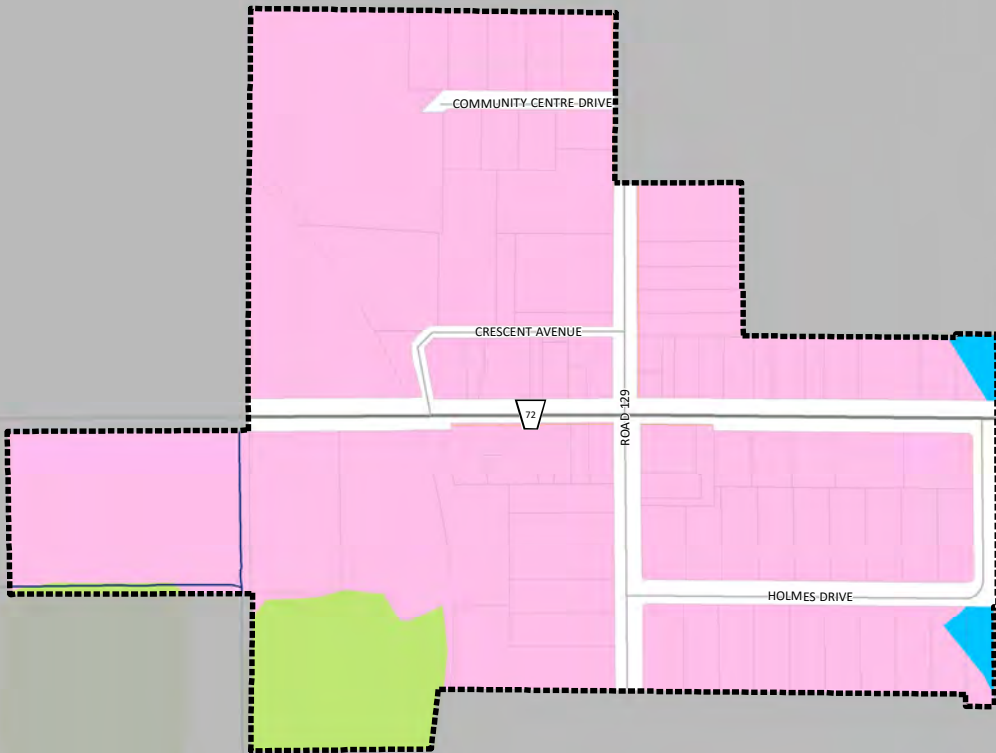
This map may incorporate data under license from:

- © King's Printer for Ontario, 2024
- © Maitland Valley Conservation Authority, 2024
- © Upper Thames River Conservation Authority, 2024
- © Grand River Conservation Authority, 2024
- © Ausable Bayfield Conservation Authority, 2024

SCHEDULE 'B'
NEWTON
LAND USE
DESIGNATIONS

Refer to Schedule 'B'
Perth East Land
Use Designations

LOT 9 CON VII



Coordinate System: NAD 1983 UTM Zone 17N
Projection: Transverse Mercator
Datum: North American 1983

LEGEND

Land Use Designations

- Natural Environment
- Village
- Floodplain

Additional Features

- County Road
- Local Road
- Watercourse

- Settlement Area Boundary
- Lots and Concessions
- Parcels

0 40 80 120 m
Scale 1:4,000
1 cm = 40 m



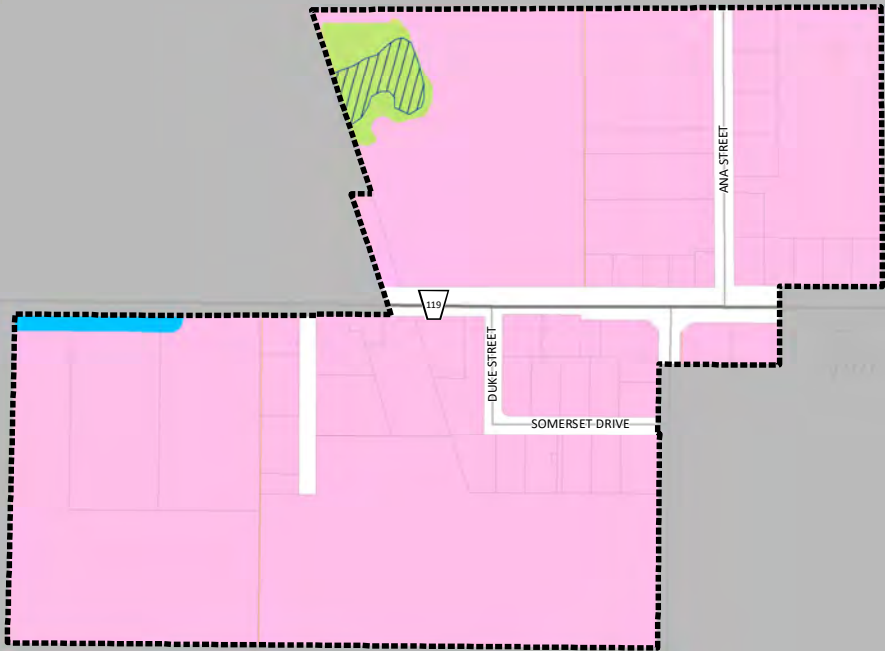
This schedule forms a part of the County of Perth Official Plan and must be read in conjunction with applicable policies of the Plan. For accurate reference recourse should be had to the original document and amendments hereto. The County of Perth does not warrant the accuracy, completeness, content, or currency of the information provided. Contains information licensed under the Open Government Licence – Ontario. This is not a legal Plan of Survey. © The Corporation of Perth County, 2024.

This map may incorporate data under license from:
© King's Printer for Ontario, 2024
© Maitland Valley Conservation Authority, 2024
© Upper Thames River Conservation Authority, 2024
© Grand River Conservation Authority, 2024
© Ausable Bayfield Conservation Authority, 2024

SCHEDULE 'B'
BRUNNER
LAND USE
DESIGNATIONS

Refer to Schedule 'B'
Perth East Land
Use Designations

LOT 10 CON I



LOT 12
CON XVI

LOT 11
CON XVI

LOT 10
CON XVI

ROAD 12.6

Coordinate System: NAD 1983 UTM Zone 17N
Projection: Transverse Mercator
Datum: North American 1983

LEGEND

Land Use Designations

- Natural Environment
- Village
- Floodplain

Additional Features

- County Road
- Local Road
- Settlement Area Boundary
- Waterbody
- Lots and Concessions
- Parcels

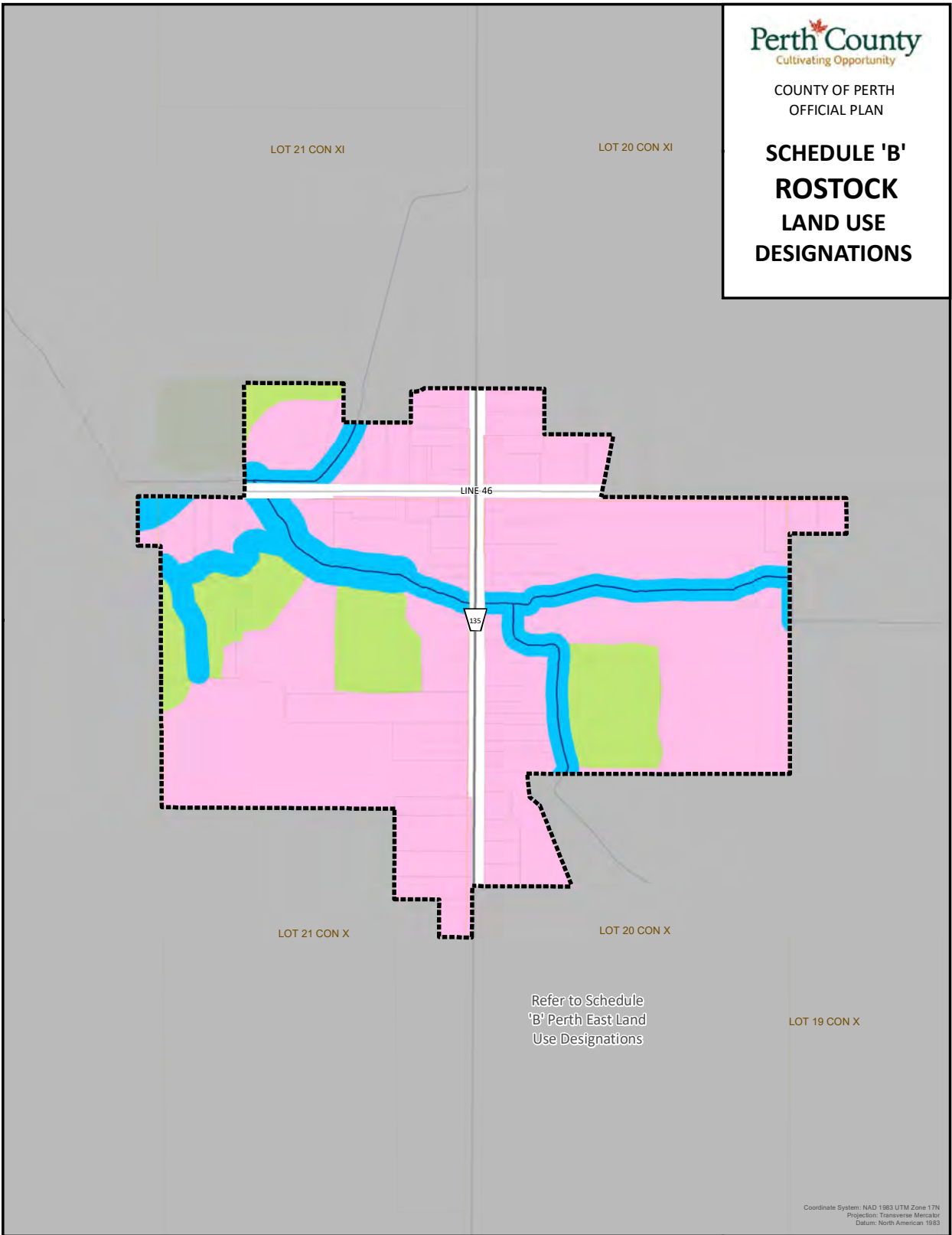
0 60 120 180 m
Scale 1:5,000
1 cm = 50 m



This schedule forms a part of the County of Perth
Official Plan and must be read in conjunction with
applicable policies of the Plan. For accurate
reference recourse should be had to the original
document and amendments hereto. The County of
Perth does not warrant the accuracy, completeness,
content, or currency of the information provided.
Contains information licensed under the Open
Government Licence – Ontario. This is not a legal
Plan of Survey. © The Corporation of Perth County,
2024.

This map may incorporate data under license from:
© King's Printer for Ontario, 2024
© Maitland Valley Conservation Authority, 2024
© Upper Thames River Conservation Authority, 2024
© Grand River Conservation Authority, 2024
© Ausable Bayfield Conservation Authority, 2024

SCHEDULE 'B'
ROSTOCK
LAND USE
DESIGNATIONS



Coordinate System: NAD 1983 UTM Zone 17N
Projection: Transverse Mercator
Datum: North American 1983

LEGEND

Land Use Designations

- Natural Environment
- Village
- Floodplain

Additional Features

- County Road
- Local Road
- Watercourse

- Settlement Area Boundary
- Lots and Concessions
- Parcels

0 60 120 180 m
Scale 1:5,000
1 cm = 50 m



This schedule forms a part of the County of Perth Official Plan and must be read in conjunction with applicable policies of the Plan. For accurate reference recourse should be had to the original document and amendments hereto. The County of Perth does not warrant the accuracy, completeness, content, or currency of the information provided. Contains information licensed under the Open Government Licence – Ontario. This is not a legal Plan of Survey. © The Corporation of Perth County, 2024.

This map may incorporate data under license from:
© King's Printer for Ontario, 2024
© Maitland Valley Conservation Authority, 2024
© Upper Thames River Conservation Authority, 2024
© Grand River Conservation Authority, 2024
© Ausable Bayfield Conservation Authority, 2024

**SCHEDULE 'B'
NITHBURG
LAND USE
DESIGNATIONS**

Regional
Municipality
of Waterloo

LOT 18
CON XIII

LOT 18
CON XII

LOT 16
CON XII

Refer to Schedule
'B' Perth East Land
Use Designations

ROAD 106

Coordinate System: NAD 1983 UTM Zone 17N
Projection: Transverse Mercator
Datum: North American 1983

LEGEND

Land Use Designations

- Natural Environment
- Village
- Floodplain

Additional Features

- County Road
- Local Road
- Watercourse
- Settlement Area Boundary
- Waterbody
- Lots and Concessions
- Parcels

0 60 120 180 m
Scale 1:5,000
1 cm = 50 m



This schedule forms a part of the County of Perth Official Plan and must be read in conjunction with applicable policies of the Plan. For accurate reference recourse should be had to the original document and amendments hereto. The County of Perth does not warrant the accuracy, completeness, content, or currency of the information provided. Contains information licensed under the Open Government Licence – Ontario. This is not a legal Plan of Survey. © The Corporation of Perth County, 2024.

This map may incorporate data under license from:
© King's Printer for Ontario, 2024
© Maitland Valley Conservation Authority, 2024
© Upper Thames River Conservation Authority, 2024
© Grand River Conservation Authority, 2024
© Ausable Bayfield Conservation Authority, 2024

SCHEDULE 'B'
WARTBURG
LAND USE
DESIGNATIONS

LOT 21
CON VII

LOT 20
CON VII

Refer to Schedule 'B'
Perth East Land
Use Designations

LINE 42

135

MEADOWVIEW DRIVE

NUHN DRIVE

LOT 21 CON VI

LOT 20 CON VI

LOT 19 CON VI

Coordinate System: NAD 1983 UTM Zone 17N
Projection: Transverse Mercator
Datum: North American 1983

LEGEND

Land Use Designations

- Village
- Floodplain

Additional Features

- County Road
- Local Road
- Watercourse

- Settlement Area Boundary
- Lots and Concessions
- Parcels

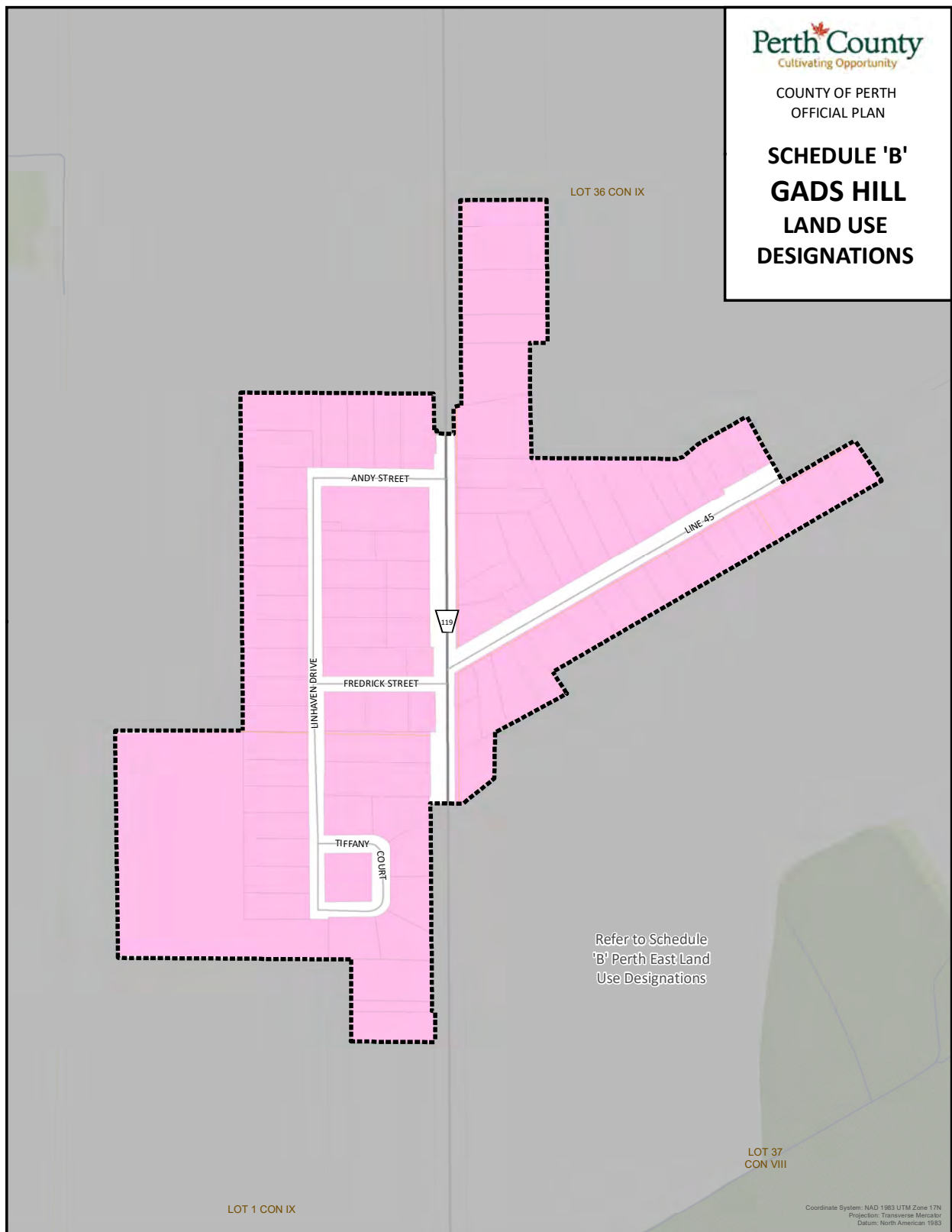
0 40 80 120 m
Scale 1:4,000
1 cm = 40 m



This schedule forms a part of the County of Perth
Official Plan and must be read in conjunction with
applicable policies of the Plan. For accurate
reference recourse should be had to the original
document and amendments hereto. The County of
Perth does not warrant the accuracy, completeness,
content, or currency of the information provided.
Contains information licensed under the Open
Government Licence – Ontario. This is not a legal
Plan of Survey. © The Corporation of Perth County,
2024.

This map may incorporate data under license from:
© King's Printer for Ontario, 2024
© Maitland Valley Conservation Authority, 2024
© Upper Thames River Conservation Authority, 2024
© Grand River Conservation Authority, 2024
© Ausable Bayfield Conservation Authority, 2024

**SCHEDULE 'B'
GADS HILL
LAND USE
DESIGNATIONS**



Refer to Schedule
'B' Perth East Land
Use Designations

LEGEND

Land Use Designations



Village

Additional Features

County Road

Local Road

Watercourse



Settlement Area Boundary



Lots and Concessions



Parcels

0 40 80 120 m
Scale 1:4,000
1 cm = 40 m



This schedule forms a part of the County of Perth Official Plan and must be read in conjunction with applicable policies of the Plan. For accurate reference recourse should be had to the original document and amendments hereto. The County of Perth does not warrant the accuracy, completeness, content, or currency of the information provided. Contains information licensed under the Open Government Licence – Ontario. This is not a legal Plan of Survey. © The Corporation of Perth County, 2024.

This map may incorporate data under license from:
© King's Printer for Ontario, 2024
© Maitland Valley Conservation Authority, 2024
© Upper Thames River Conservation Authority, 2024
© Grand River Conservation Authority, 2024
© Ausable Bayfield Conservation Authority, 2024

**SCHEDULE 'B'
MILLBANK
LAND USE
DESIGNATIONS**

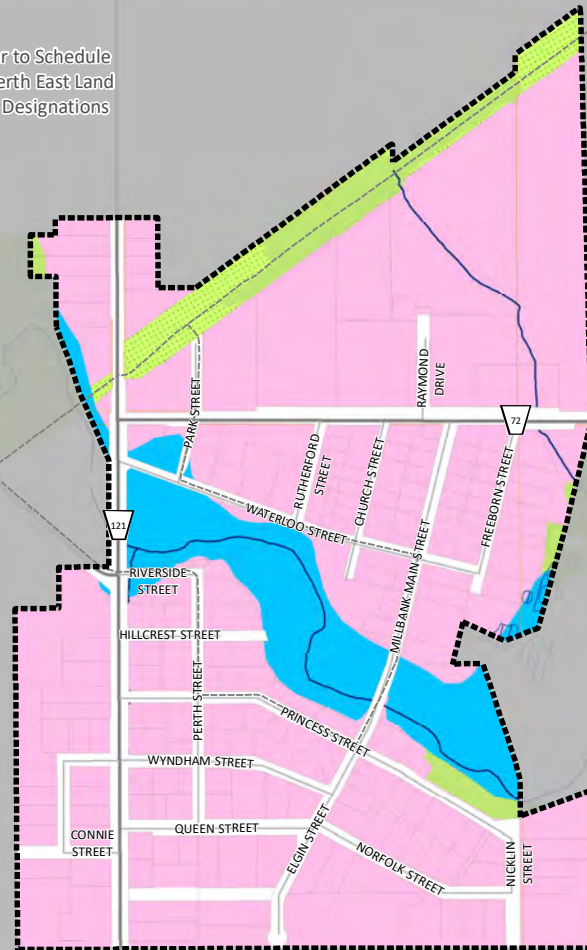
LOT 15
CON VII

LOT 16
CON VII

Refer to Schedule
'B' Perth East Land
Use Designations

LOT 15 CON VI

LOT 17 CON VI



Coordinate System: NAD 1983 UTM Zone 17N
Projection: Transverse Mercator
Datum: North American 1983

LEGEND

Land Use Designations

- Open Space
- Natural Environment
- Village
- Floodplain

Additional Features

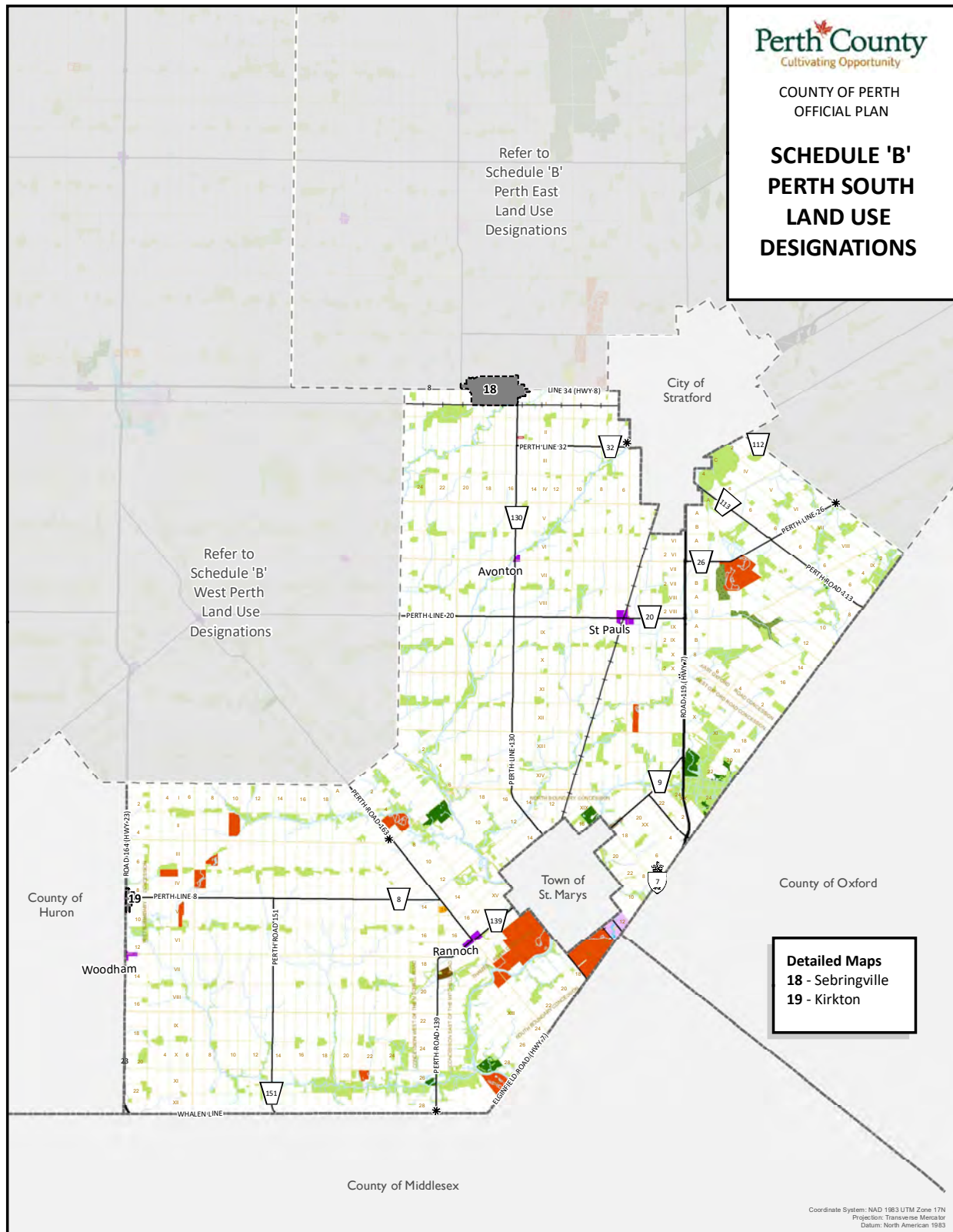
- County Road
- Local Road
- Watercourse
- Former Railway Line
- Settlement Area Boundary
- Waterbody
- Lots and Concessions
- Parcels

0 90 180 270 m
Scale 1:7,500
1 cm = 75 m

This schedule forms a part of the County of Perth Official Plan and must be read in conjunction with applicable policies of the Plan. For accurate reference recourse should be had to the original document and amendments hereto. The County of Perth does not warrant the accuracy, completeness, content, or currency of the information provided. Contains information licensed under the Open Government Licence – Ontario. This is not a legal Plan of Survey. © The Corporation of Perth County, 2024.

This map may incorporate data under license from:
© King's Printer for Ontario, 2024
© Maitland Valley Conservation Authority, 2024
© Upper Thames River Conservation Authority, 2024
© Grand River Conservation Authority, 2024
© Ausable Bayfield Conservation Authority, 2024

**SCHEDULE 'B'
PERTH SOUTH
LAND USE
DESIGNATIONS**



LEGEND

Land Use Designations

- Agriculture
- Hamlet
- Mineral Aggregate
- Open Space
- Recreation
- Natural Environment – Provincially Significant Wetlands

Natural Environment

- Employment
- Urban Fringe
- Open Landfill
- Institutional
- Floodplain
- Rural Cluster

Additional Features

- Provincial Highway
- County Road
- Railway/ Right of Way
- Watercourse

- Refer to Detailed Maps
- Waterbody
- Closed Landfill
- Lots and Concessions
- Municipal Boundary

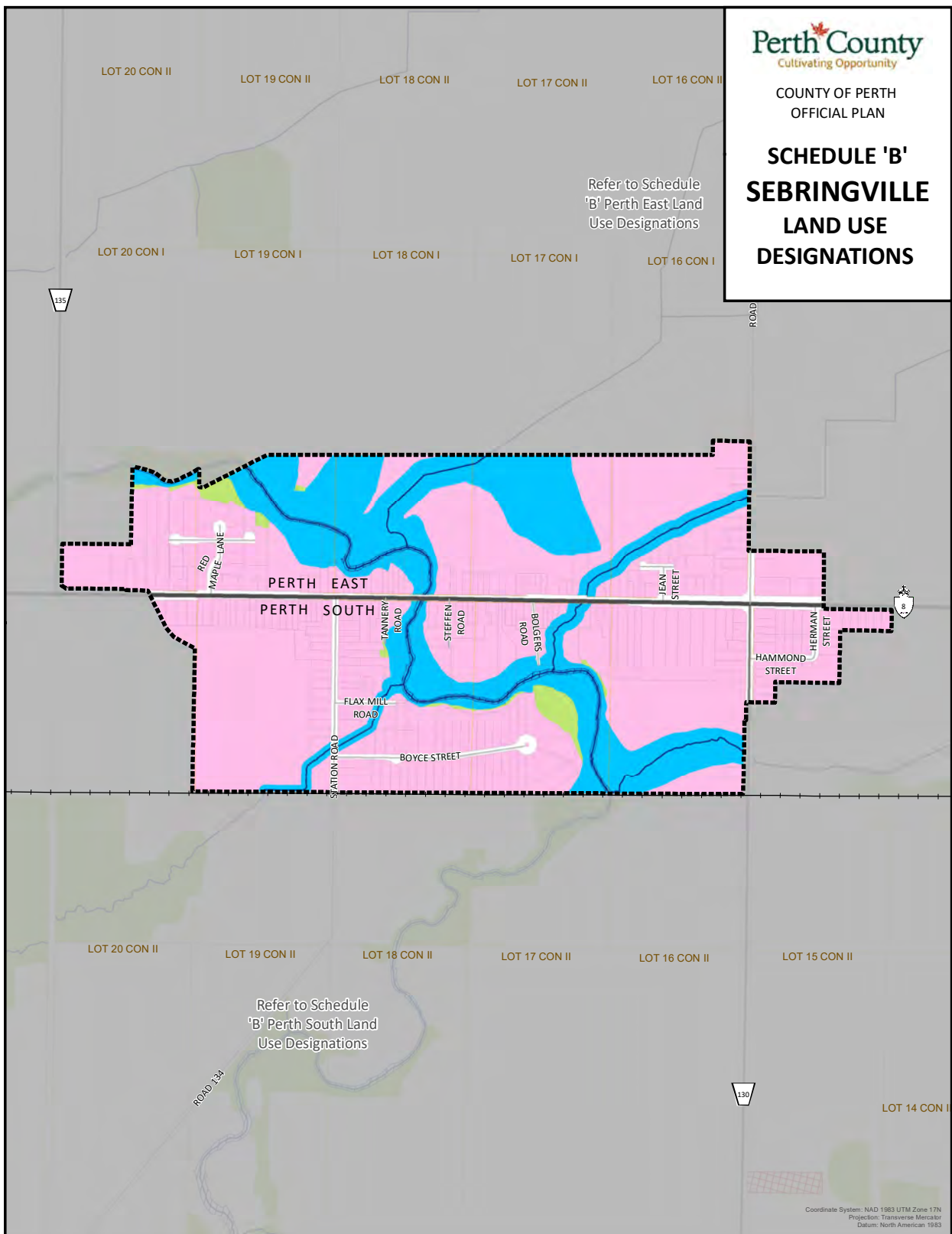
0 1.5 3 4.5 km
Scale 1:135,000
1 cm = 1 km



This schedule forms a part of the County of Perth Official Plan and must be read in conjunction with applicable policies of the Plan. For accurate reference recourse should be had to the original document and amendments hereto. The County of Perth does not warrant the accuracy, completeness, content, or currency of the information provided. Contains information licensed under the Open Government Licence – Ontario. This is not a legal Plan of Survey. © The Corporation of Perth County, 2024.

This map may incorporate data under license from:
© King's Printer for Ontario, 2024
© Maitland Valley Conservation Authority, 2024
© Upper Thames River Conservation Authority, 2024
© Grand River Conservation Authority, 2024
© Ausable Bayfield Conservation Authority, 2024

SCHEDULE 'B'
SEBRINGVILLE
LAND USE
DESIGNATIONS



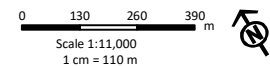
LEGEND

Land Use Designations

- Natural Environment
- Village
- Floodplain

Additional Features

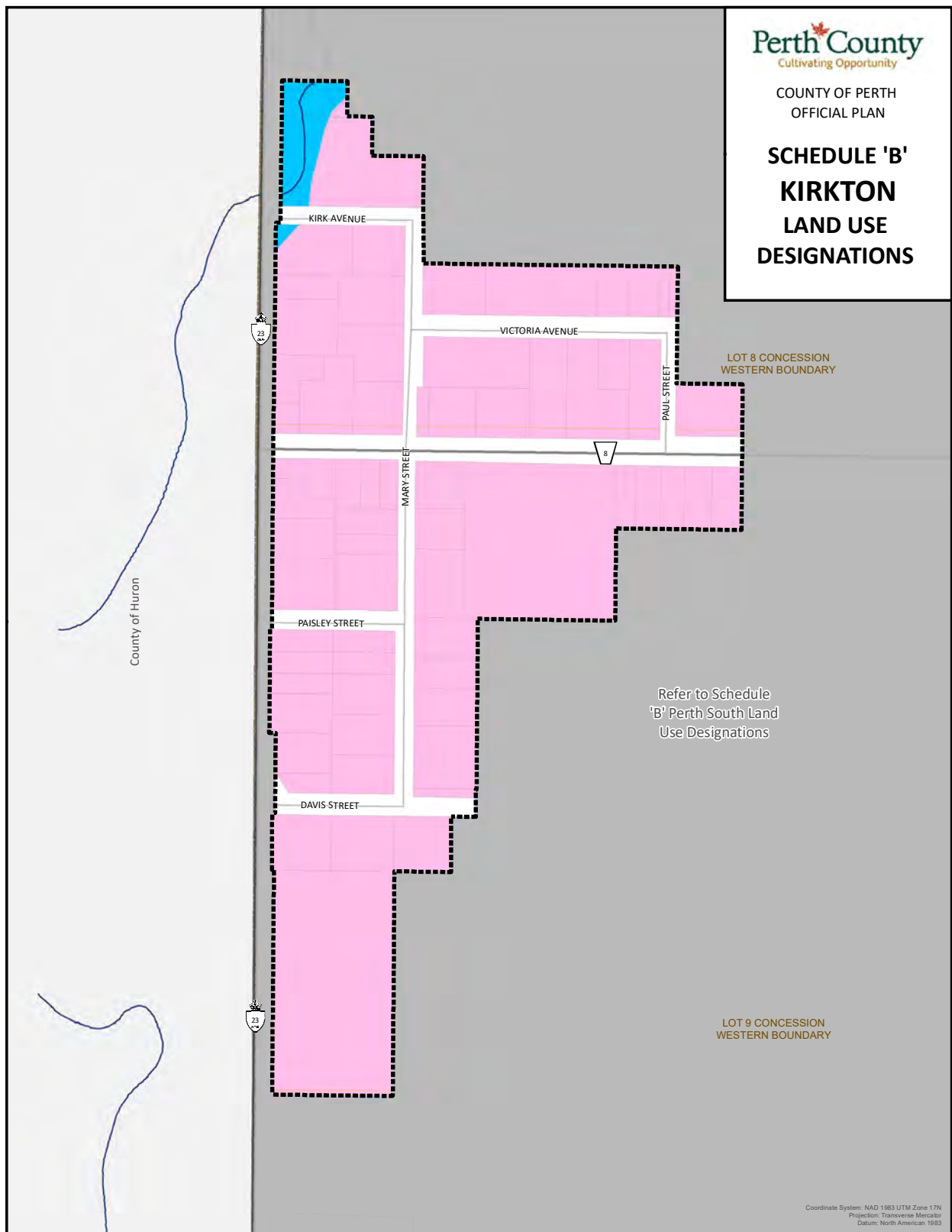
- Provincial Highway
- County Road
- Local Road
- Watercourse
- Railway/ Right of Way
- Settlement Area Boundary
- Waterbody
- Lots and Concessions
- Parcels



This schedule forms a part of the County of Perth Official Plan and must be read in conjunction with applicable policies of the Plan. For accurate reference recourse should be had to the original document and amendments hereto. The County of Perth does not warrant the accuracy, completeness, content, or currency of the information provided. Contains information licensed under the Open Government Licence – Ontario. This is not a legal Plan of Survey. © The Corporation of Perth County, 2024.

This map may incorporate data under license from:
© King's Printer for Ontario, 2024
© Maitland Valley Conservation Authority, 2024
© Upper Thames River Conservation Authority, 2024
© Grand River Conservation Authority, 2024
© Ausable Bayfield Conservation Authority, 2024

**SCHEDULE 'B'
KIRKTON
LAND USE
DESIGNATIONS**



LEGEND

Land Use Designations

- Village
- Floodplain

Additional Features

- Provincial Highway
- County Road
- Local Road
- Watercourse

- Waterbody

- Parcels

- Settlement Area Boundary

- Lots and Concessions

0 30 60 90 m
Scale 1:3,000
1 cm = 30 m



This schedule forms a part of the County of Perth Official Plan and must be read in conjunction with applicable policies of the Plan. For accurate reference recourse should be had to the original document and amendments hereto. The County of Perth does not warrant the accuracy, completeness, content, or currency of the information provided. Contains information licensed under the Open Government Licence – Ontario. This is not a legal Plan of Survey. © The Corporation of Perth County, 2024.

This map may incorporate data under license from:
© King's Printer for Ontario, 2024
© Maitland Valley Conservation Authority, 2024
© Upper Thames River Conservation Authority, 2024
© Grand River Conservation Authority, 2024
© Ausable Bayfield Conservation Authority, 2024

SCHEDULE 'B' WEST PERTH LAND USE DESIGNATIONS

Detailed Maps

5 - Monkton
15 - Dublin
16 - Mitchell
17 - Staffa



LEGEND

Land Use Designations

	Agriculture		Open Landfill
	Hamlet		Rural Cluster
	Mineral Aggregate		
	Open Space		
	Recreation		
	Natural Environment		

Additional Features

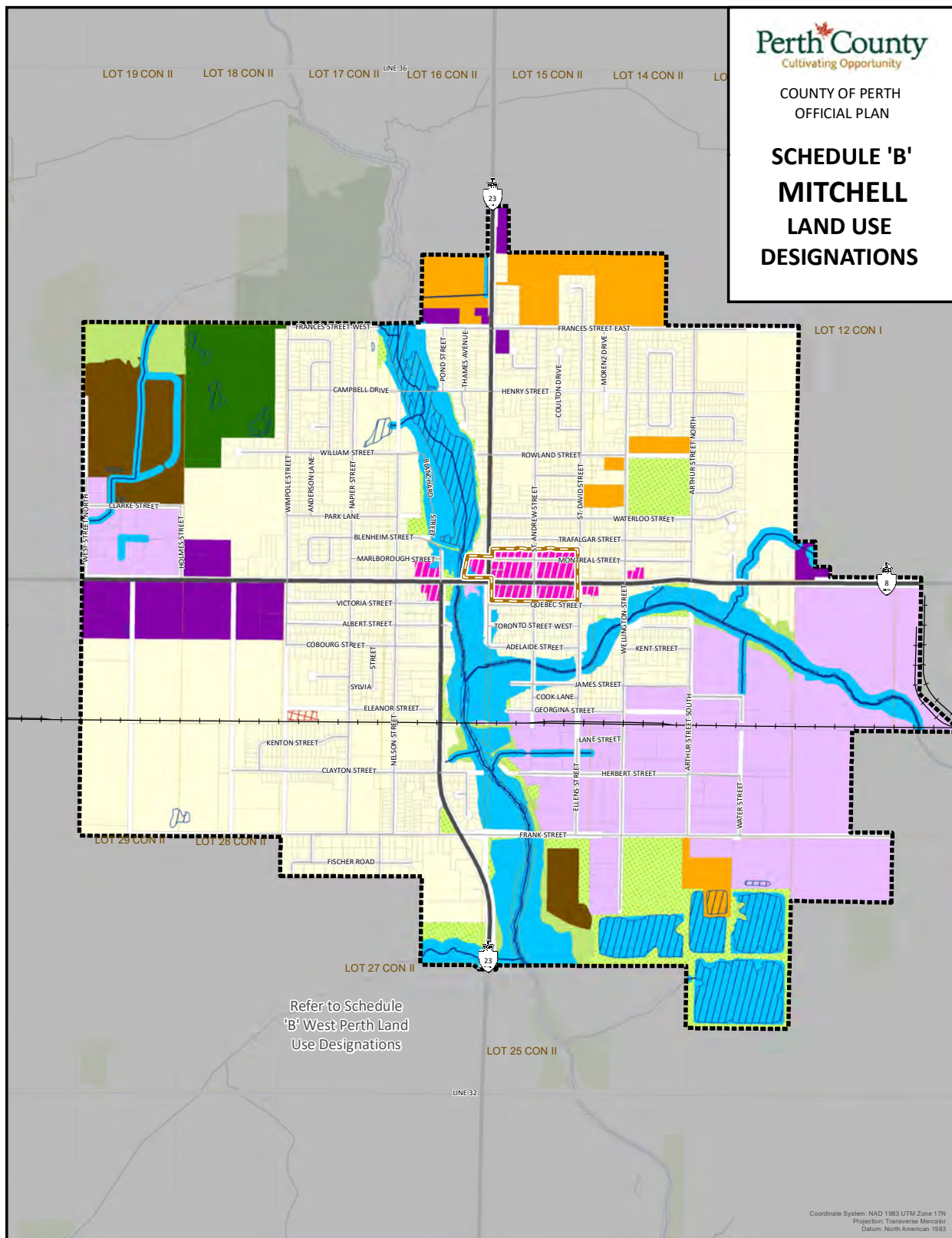
	Provincial Highway		Refer to Detailed Maps
	County Road		Waterbody
	Railway/ Right of Way		Closed Landfill
	Former Railway Line		Lots and Concessions
	Watercourse		Municipal Boundary

0 1.5 3 4.5 km
Scale 1:135,000
1 cm = 1 km

This schedule forms a part of the County of Perth Official Plan and must be read in conjunction with applicable policies of the Plan. For accurate reference recourse should be had to the original document and amendments hereto. The County of Perth does not warrant the accuracy, completeness, content, or currency of the information provided. Contains information licensed under the Open Government Licence – Ontario. This is not a legal Plan of Survey. © The Corporation of Perth County, 2024.

This map may incorporate data under license from:
© King's Printer for Ontario, 2024
© Maitland Valley Conservation Authority, 2024
© Upper Thames River Conservation Authority, 2024
© Grand River Conservation Authority, 2024
© Ausable Bayfield Conservation Authority, 2024

**SCHEDULE 'B'
MITCHELL
LAND USE
DESIGNATIONS**



LEGEND

Land Use Designations

- Open Space
- Natural Environment
- Recreation
- Neighbourhood
- Urban Mixed Use
- Corridor Commercial
- Employment
- Institutional
- Open Landfill
- Floodplain

Additional Features

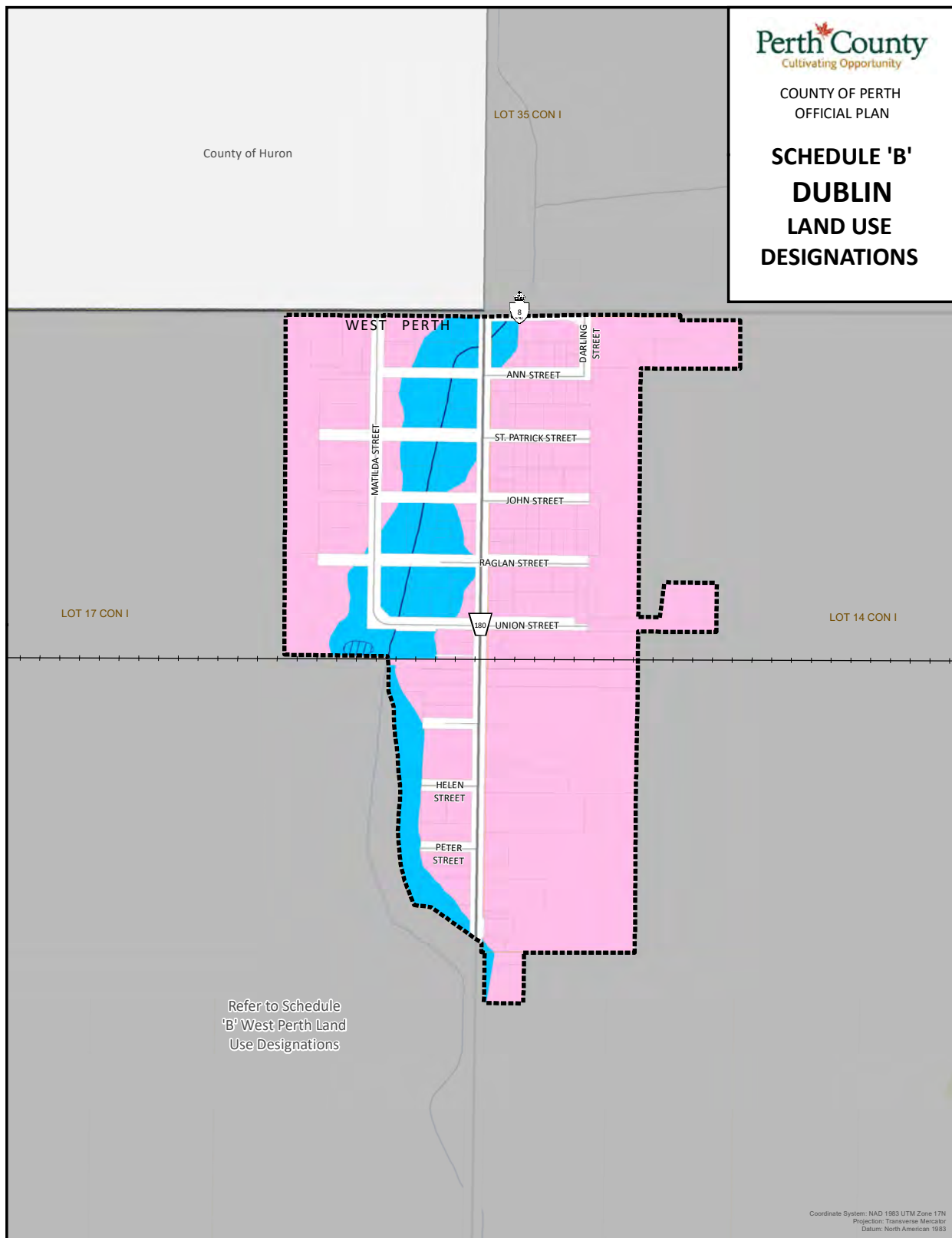
- Provincial Highway
- County Road
- Local Road
- Railway/ Right of Way
- Watercourse
- Strategic Growth Area
- Waterbody
- Settlement Area Boundary
- Closed Landfill
- Lots and Concessions
- Parcels

0 180 360 540 m
Scale 1:15,000
1 cm = 150 m

This schedule forms a part of the County of Perth Official Plan and must be read in conjunction with applicable policies of the Plan. For accurate reference recourse should be had to the original document and amendments hereto. The County of Perth does not warrant the accuracy, completeness, content, or currency of the information provided. Contains information licensed under the Open Government Licence – Ontario. This is not a legal Plan of Survey. © The Corporation of Perth County, 2024.

This map may incorporate data under license from:
© King's Printer for Ontario, 2024
© Maitland Valley Conservation Authority, 2024
© Upper Thames River Conservation Authority, 2024
© Grand River Conservation Authority, 2024
© Ausable Bayfield Conservation Authority, 2024

SCHEDULE 'B'
DUBLIN
LAND USE
DESIGNATIONS



LEGEND

Land Use Designations

- Village
- Floodplain

Additional Features

- Provincial Highway
- County Road
- Local Road
- Railway/ Right of Way
- Watercourse
- Waterbody
- Settlement Area Boundary
- Lots and Concessions
- Parcels

0 70 140 210 m
Scale 1:6,000
1 cm = 60 m



This schedule forms a part of the County of Perth Official Plan and must be read in conjunction with applicable policies of the Plan. For accurate reference recourse should be had to the original document and amendments hereto. The County of Perth does not warrant the accuracy, completeness, content, or currency of the information provided. Contains information licensed under the Open Government Licence – Ontario. This is not a legal Plan of Survey. © The Corporation of Perth County, 2024.

This map may incorporate data under license from:
© King's Printer for Ontario, 2024
© Maitland Valley Conservation Authority, 2024
© Upper Thames River Conservation Authority, 2024
© Grand River Conservation Authority, 2024
© Ausable Bayfield Conservation Authority, 2024

LOT 16
CON VIII

SCHEDULE 'B'
STAFFA
LAND USE
DESIGNATIONS

Refer to Schedule
'B' West Perth Land
Use Designations

LOT 16 CON IX

LOT 15 CON IX









Coordinate System: NAD 1983 UTM Zone 17N
Projection: Transverse Mercator
Datum: North American 1983

LEGEND

Land Use Designations

-  Natural Environment
-  Village
-  Floodplain

Additional Features

-  Provincial Highway
-  County Road
-  Local Road
-  Watercourse
-  Waterbody
-  Settlement Area Boundary
-  Lots and Concessions
-  Parcels

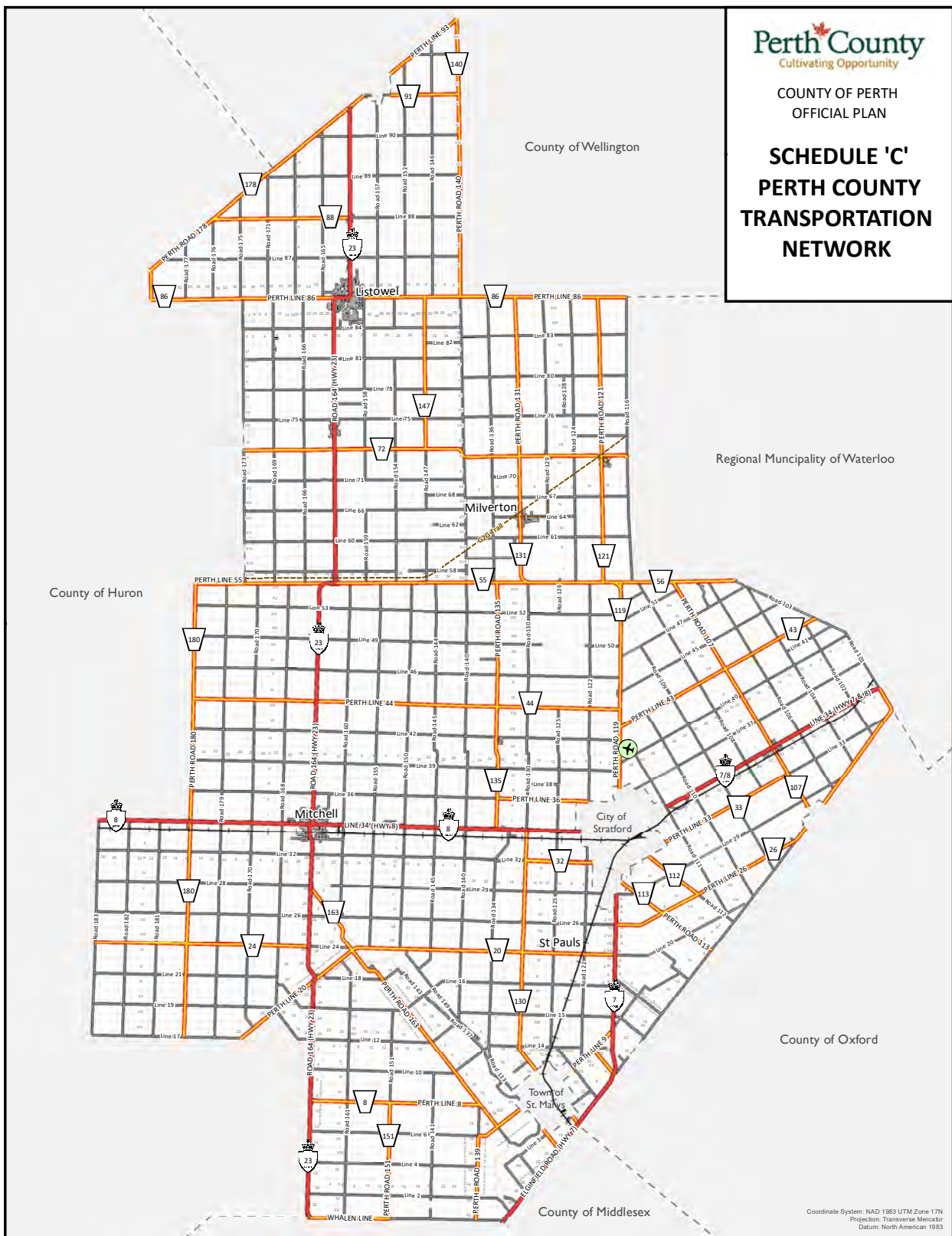
0 30 60 90 m
Scale 1:3,000
1 cm = 30 m



This schedule forms a part of the County of Perth Official Plan and must be read in conjunction with applicable policies of the Plan. For accurate reference recourse should be had to the original document and amendments hereto. The County of Perth does not warrant the accuracy, completeness, content, or currency of the information provided. Contains information licensed under the Open Government Licence – Ontario. This is not a legal Plan of Survey. © The Corporation of Perth County, 2024.




This map may incorporate data under license from:
© King's Printer for Ontario, 2024
© Maitland Valley Conservation Authority, 2024
© Upper Thames River Conservation Authority, 2024
© Grand River Conservation Authority, 2024
© Ausable Bayfield Conservation Authority, 2024

**SCHEDULE 'C'
PERTH COUNTY
TRANSPORTATION
NETWORK**



LEGEND


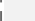
Road Network

-  Provincial Highway
-  County Road
-  Local Road

Air and Rail Network

-  Municipal Airport
- Ontario Railway Network**
-  Goderich-Exeter Railway
-  Former Railway Line

Additional Features

-  Lots and Concessions
-  Municipal Boundary

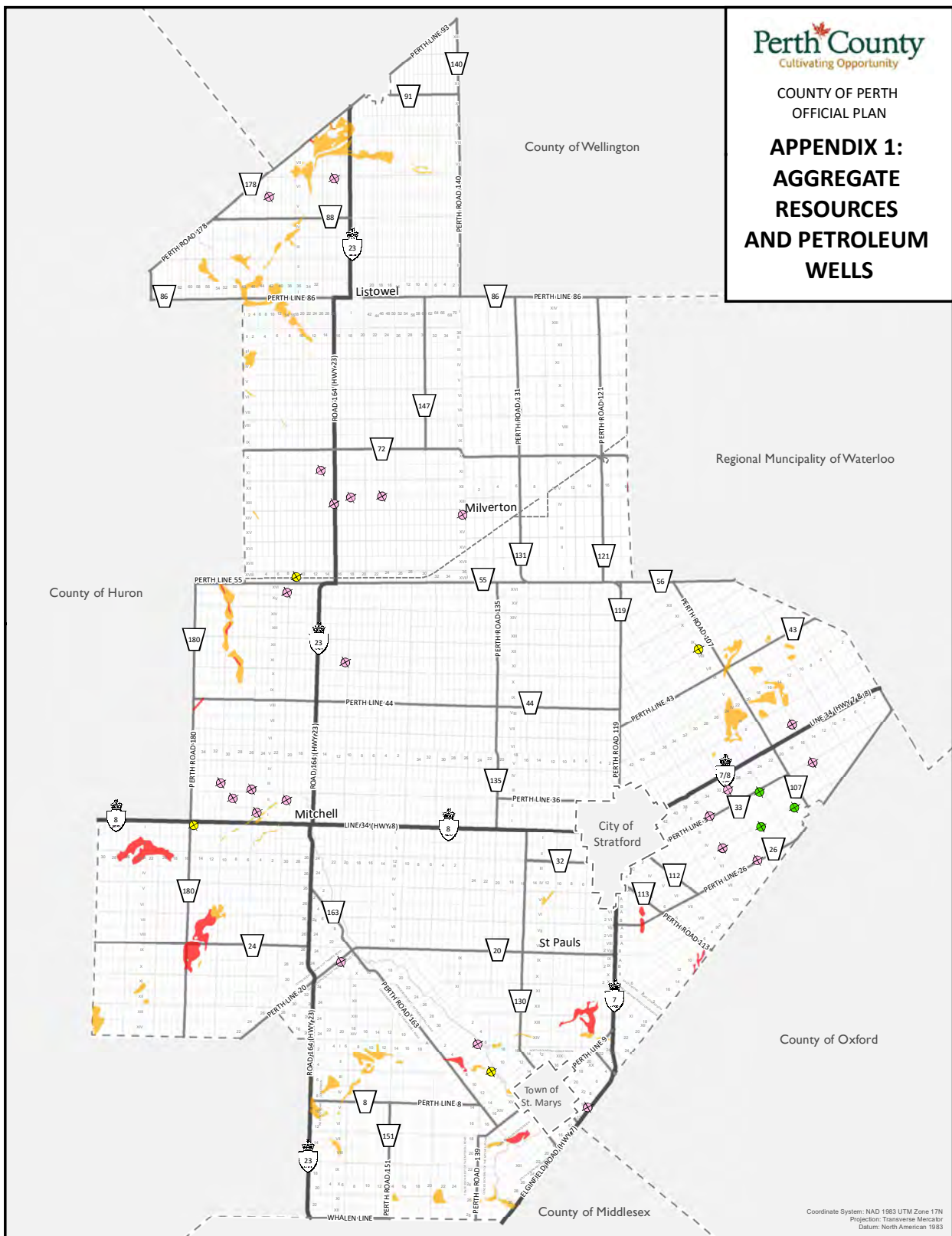
0 2.5 5 7.5 km
Scale 1:250,000
1 cm = 3 km



This schedule forms a part of the County of Perth Official Plan and must be read in conjunction with applicable policies of the Plan. For accurate reference recourse should be had to the original document and amendments hereto. The County of Perth does not warrant the accuracy, completeness, content, or currency of the information provided. Contains information licensed under the Open Government Licence – Ontario. This is not a legal Plan of Survey. © The Corporation of Perth County, 2024.

This map may incorporate data under license from:
© King's Printer for Ontario, 2024
© Maitland Valley Conservation Authority, 2024
© Upper Thames River Conservation Authority, 2024
© Grand River Conservation Authority, 2024
© Ausable Bayfield Conservation Authority, 2024

**APPENDIX 1:
AGGREGATE
RESOURCES
AND PETROLEUM
WELLS**



LEGEND

**Aggregate Resources Inventory Paper
(ARIP) 175**

- Primary Aggregate Deposit
- Secondary Aggregate Deposit

Petroleum Wells

- Active
- Abandoned Well
- Unknown Mode

Additional Features

- Provincial Highway
- County Road
- Former Railway Line
- Lots and Concessions
- Municipal Boundary

REFERENCE: Aggregate Resources Inventory of the County of Perth
Southern Ontario. Ontario Geological Survey Aggregate Resources
Inventory Paper 175. 2013.

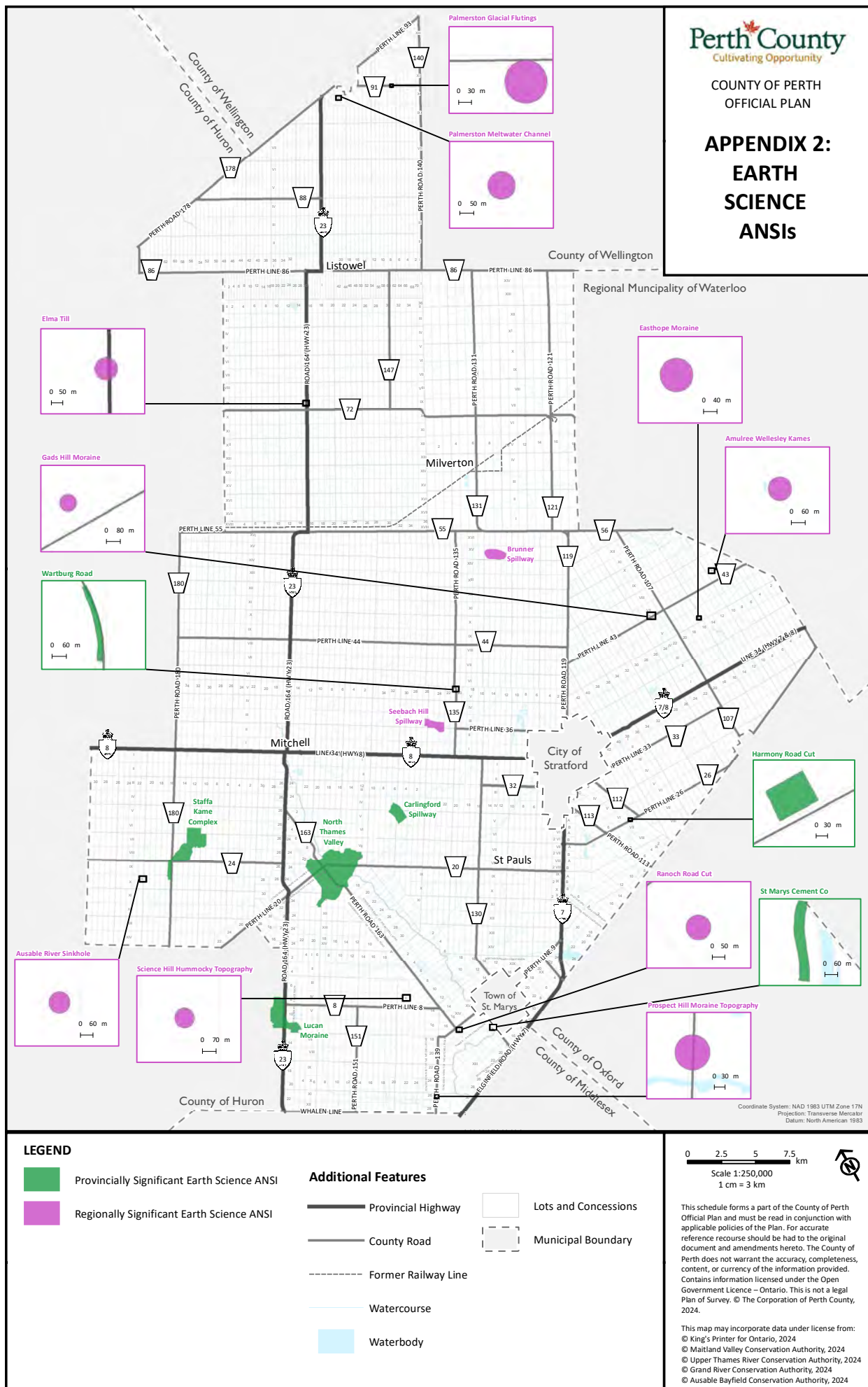
0 2.5 5 7.5 km
Scale 1:250,000
1 cm = 3 km



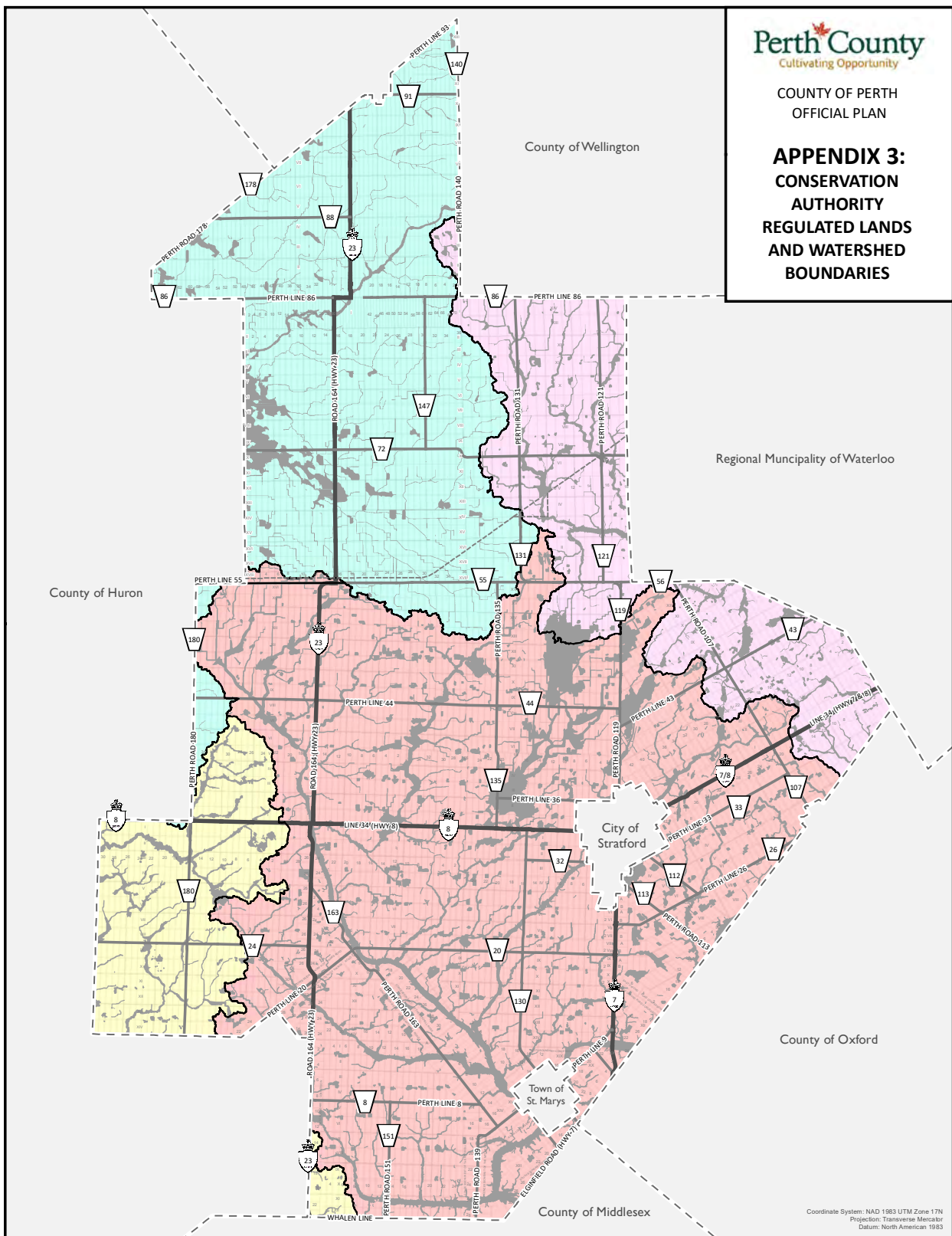
This schedule forms a part of the County of Perth
Official Plan and must be read in conjunction with
applicable policies of the Plan. For accurate
reference recourse should be had to the original
document and amendments hereto. The County of
Perth does not warrant the accuracy, completeness,
content, or currency of the information provided.
Contains information licensed under the Open
Government Licence – Ontario. This is not a legal
Plan of Survey. © The Corporation of Perth County,
2024.

This map may incorporate data under license from:
© King's Printer for Ontario, 2024
© Maitland Valley Conservation Authority, 2024
© Upper Thames River Conservation Authority, 2024
© Grand River Conservation Authority, 2024
© Ausable Bayfield Conservation Authority, 2024

APPENDIX 2: EARTH SCIENCE ANSIs



**APPENDIX 3:
CONSERVATION
AUTHORITY
REGULATED LANDS
AND WATERSHED
BOUNDARIES**



LEGEND

Conservation Authority Regulation Limits

Watershed Boundary

Ausable Bayfield Conservation Authority
 Grand River Conservation Authority
 Maitland Valley Conservation Authority
 Upper Thames River Conservation Authority

Additional Features

Provincial Highway
 County Road
 Former Railway Line
 Lots and Concessions
 Municipal Boundary

0 2.5 5 7.5 km
Scale 1:250,000
1 cm = 3 km

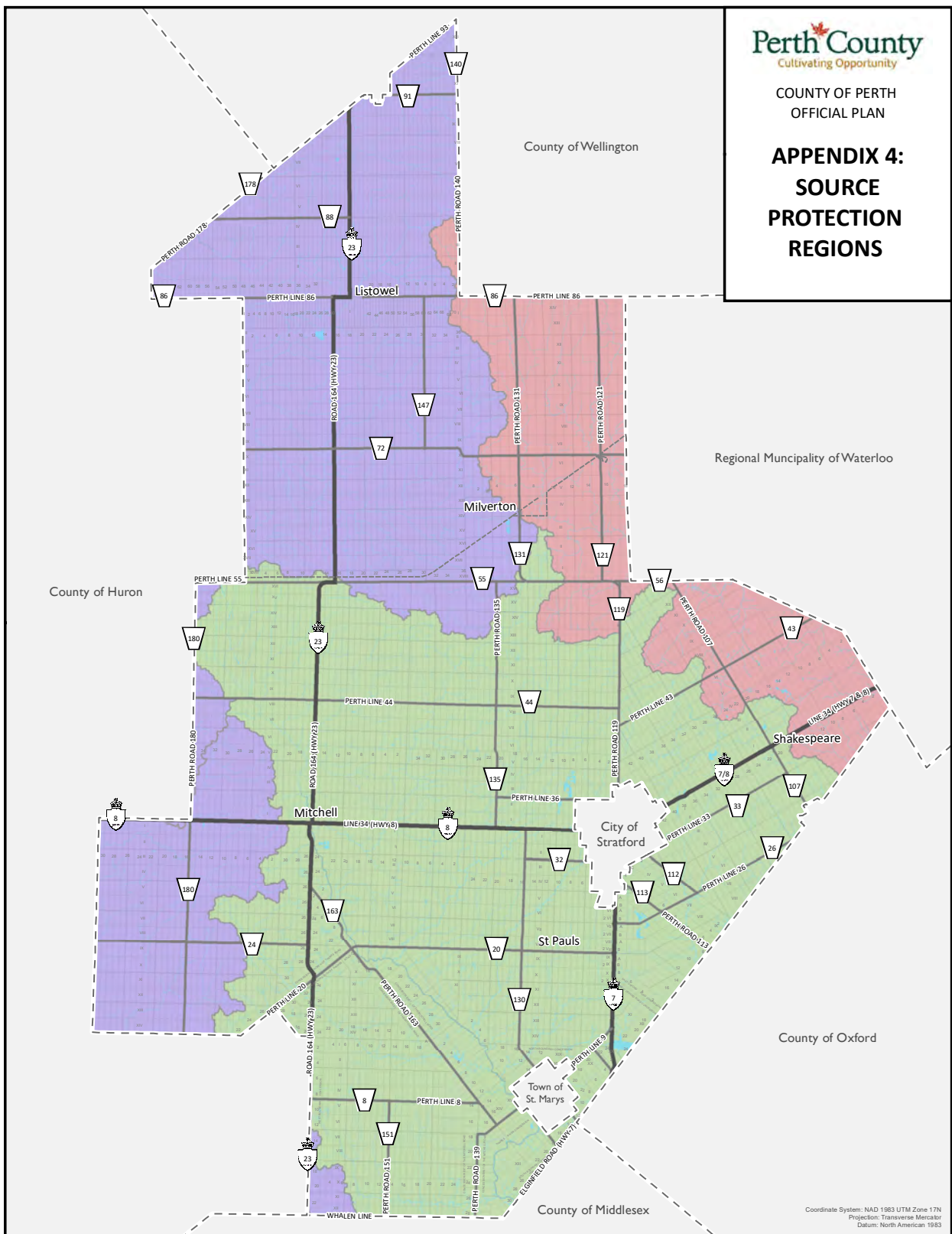


This schedule forms a part of the County of Perth Official Plan and must be read in conjunction with applicable policies of the Plan. For accurate reference recourse should be had to the original document and amendments hereto. The County of Perth does not warrant the accuracy, completeness, content, or currency of the information provided. Contains information licensed under the Open Government Licence – Ontario. This is not a legal Plan of Survey. © The Corporation of Perth County, 2024.

This map may incorporate data under license from:
© King's Printer for Ontario, 2024
© Maitland Valley Conservation Authority, 2024
© Upper Thames River Conservation Authority, 2024
© Grand River Conservation Authority, 2024
© Ausable Bayfield Conservation Authority, 2024

NOTE: This map is prepared with data provided by the Conservation Authorities. The Conservation Authorities may update the data from time to time. The applicable Conservation Authority should be contacted for permits required pursuant to the Conservation Authority Act.

**APPENDIX 4:
SOURCE
PROTECTION
REGIONS**



Coordinate System: NAD 1983 UTM Zone 17N
Projection: Transverse Mercator
Datum: North American 1983

LEGEND

Source Protection Regions

- Ausable Bayfield Maitland Valley
- Lake Erie
- Thames, Sydenham and Region

Additional Features

- Provincial Highway
- County Road
- Former Railway Line
- Watercourse
- Waterbody
- Lots and Concessions
- Municipal Boundary

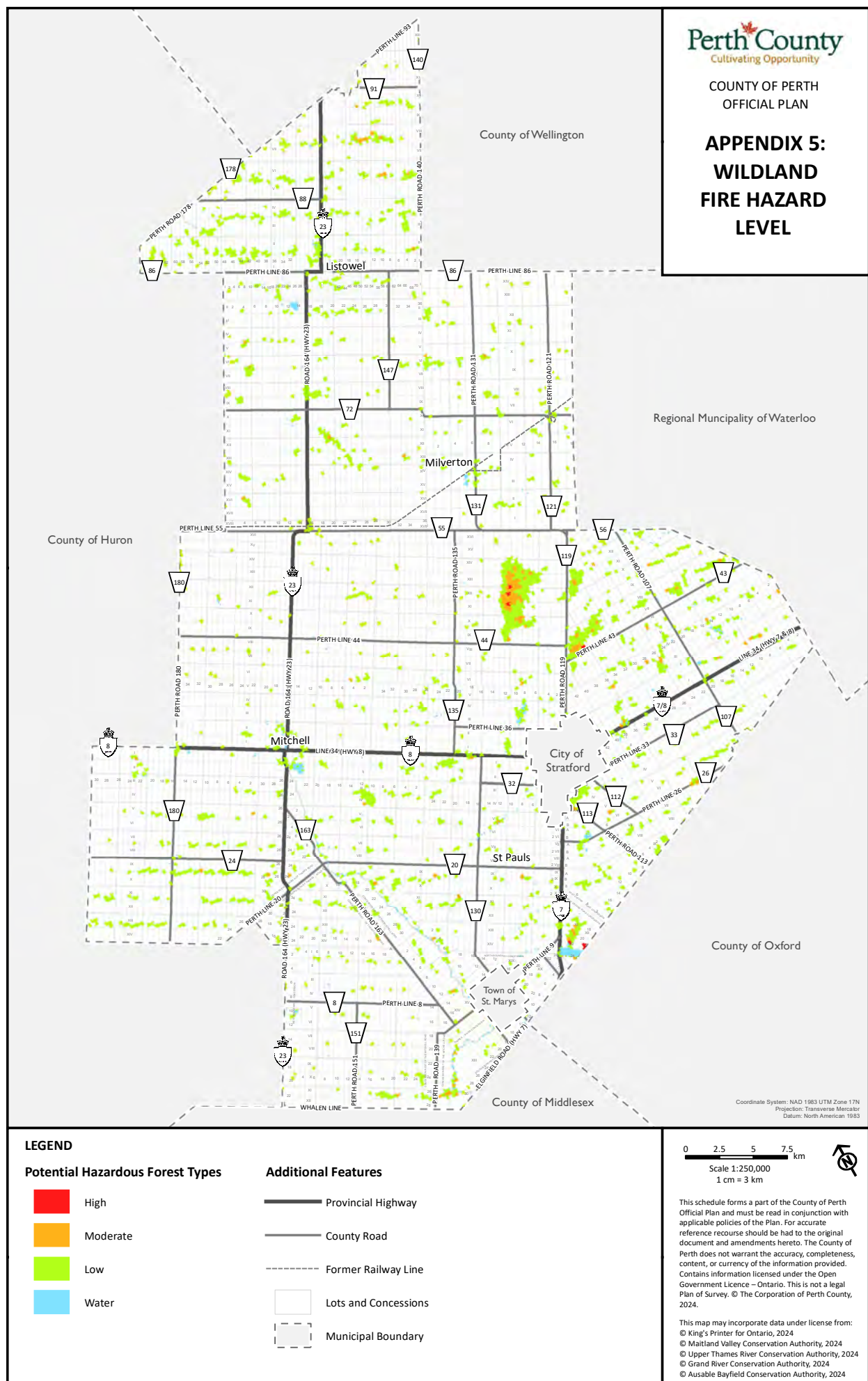
0 2.5 5 7.5 km
Scale 1:250,000
1 cm = 3 km



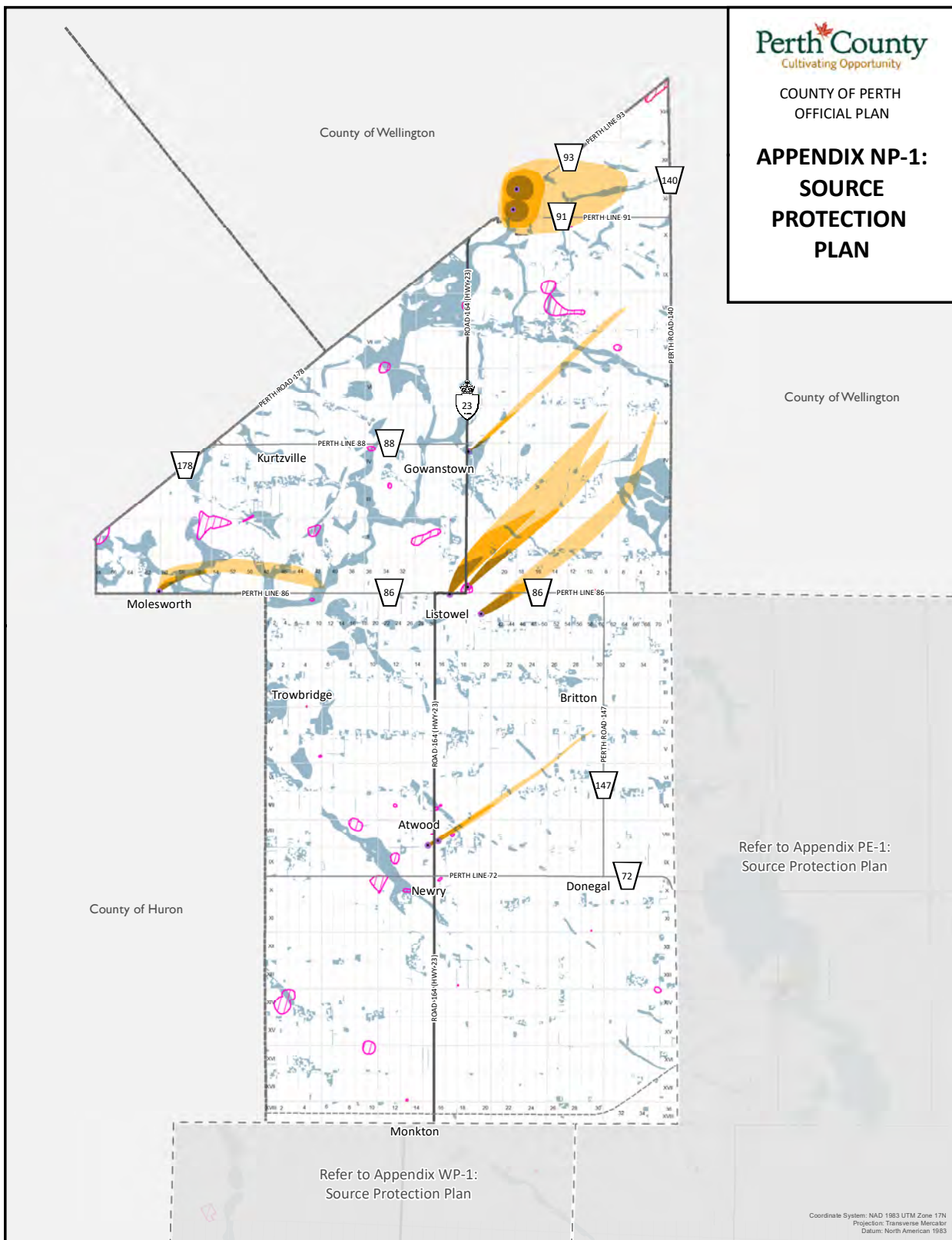
This schedule forms a part of the County of Perth Official Plan and must be read in conjunction with applicable policies of the Plan. For accurate reference recourse should be had to the original document and amendments hereto. The County of Perth does not warrant the accuracy, completeness, content, or currency of the information provided. Contains information licensed under the Open Government Licence – Ontario. This is not a legal Plan of Survey. © The Corporation of Perth County, 2024.

This map may incorporate data under license from:
© King's Printer for Ontario, 2024
© Maitland Valley Conservation Authority, 2024
© Upper Thames River Conservation Authority, 2024
© Grand River Conservation Authority, 2024
© Ausable Bayfield Conservation Authority, 2024

APPENDIX 5: WILDLAND FIRE HAZARD LEVEL



**APPENDIX NP-1:
SOURCE
PROTECTION
PLAN**



LEGEND

Wellhead Protection Areas (WHPA)

- Zone A - 100 m fixed radius around each well
- Zone B - 2 year time of travel
- Zone C - 5 year time of travel
- Zone D - 25 year time of travel
- Zone E - Recharge area for GUDI (Groundwater Under the Direct Influence) wells

Other Source Water Protection Features

- Municipal Well Supply
- Highly Vulnerable Aquifers (HVA)
- Significant Groundwater Recharge Areas (SGRA)

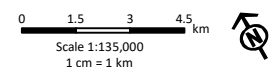
Road Network

- Provincial Highway
- County Road
- Former Railway Line

Additional Features

- Municipal Boundary
- Lots and Concessions

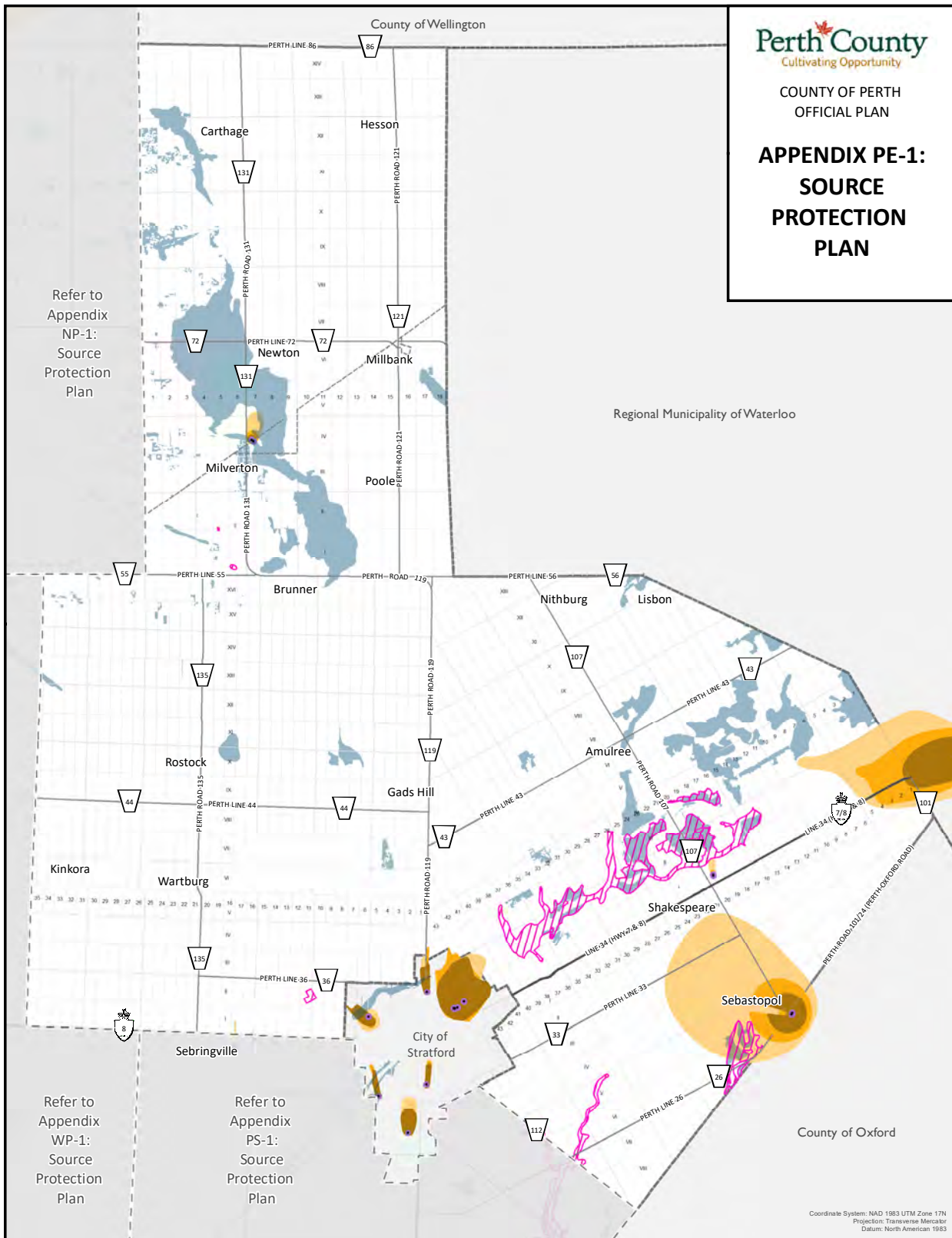
NOTE: This map is prepared with data provided by the Conservation Authorities. The Conservation Authorities may update the data from time to time. The applicable Conservation Authority should be consulted for Source Water Protection requirements.



This schedule forms a part of the County of Perth Official Plan and must be read in conjunction with applicable policies of the Plan. For accurate reference recourse should be had to the original document and amendments hereto. The County of Perth does not warrant the accuracy, completeness, content, or currency of the information provided. Contains information licensed under the Open Government Licence – Ontario. This is not a legal Plan of Survey. © The Corporation of Perth County, 2024.

This map may incorporate data under license from:
© King's Printer for Ontario, 2024
© Maitland Valley Conservation Authority, 2024
© Upper Thames River Conservation Authority, 2024
© Grand River Conservation Authority, 2024
© Ausable Bayfield Conservation Authority, 2024

**APPENDIX PE-1:
SOURCE
PROTECTION
PLAN**



LEGEND

Wellhead Protection Areas (WHPA)

- Zone A - 100 m fixed radius around each well
- Zone B - 2 year time of travel
- Zone C - 5 year time of travel
- Zone D - 25 year time of travel
- Zone E - Recharge area for GUDI (Groundwater Under the Direct Influence) wells

Other Source Water Protection Features

- Municipal Well Supply
- Highly Vulnerable Aquifers (HVA)
- Significant Groundwater Recharge Areas (SGRA)

Road Network

- Provincial Highway
- County Road
- Former Railway Line

Additional Features

- Municipal Boundary
- Lots and Concessions

NOTE: This map is prepared with data provided by the Conservation Authorities. The Conservation Authorities may update the data from time to time. The applicable Conservation Authority should be consulted for Source Water Protection requirements.

0 1.5 3 4.5 km
Scale 1:135,000
1 cm = 1 km



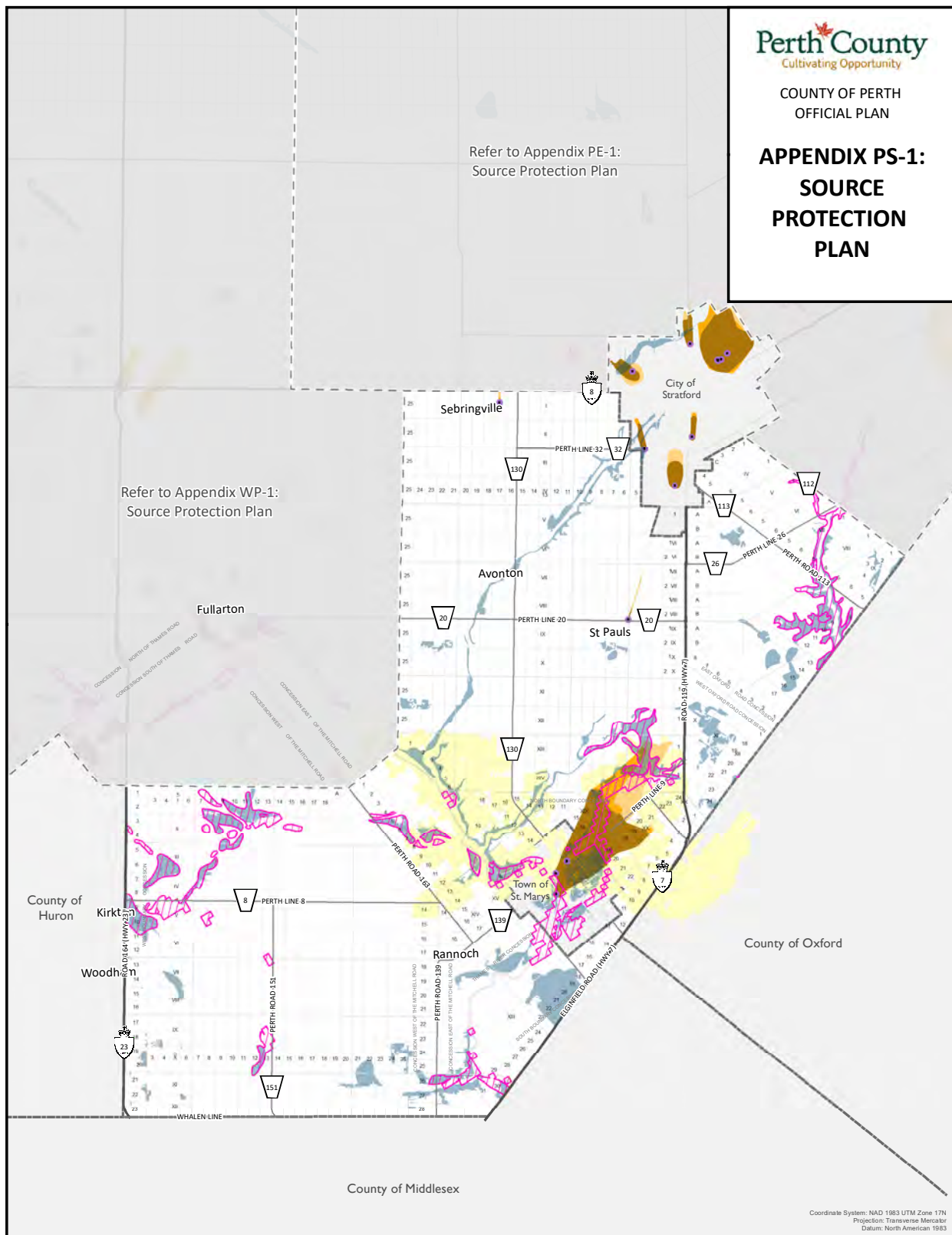
This schedule forms a part of the County of Perth Official Plan and must be read in conjunction with applicable policies of the Plan. For accurate reference recourse should be had to the original document and amendments hereto. The County of Perth does not warrant the accuracy, completeness, content, or currency of the information provided. Contains information licensed under the Open Government Licence – Ontario. This is not a legal Plan of Survey. © The Corporation of Perth County, 2024.

This map may incorporate data under license from:
© King's Printer for Ontario, 2024
© Maitland Valley Conservation Authority, 2024
© Upper Thames River Conservation Authority, 2024
© Grand River Conservation Authority, 2024
© Ausable Bayfield Conservation Authority, 2024

**APPENDIX PS-1:
SOURCE
PROTECTION
PLAN**

Refer to Appendix PE-1:
Source Protection Plan

Refer to Appendix WP-1:
Source Protection Plan



Coordinate System: NAD 1983 UTM Zone 17N
Projection: Transverse Mercator
Datum: North American 1983

LEGEND

Wellhead Protection Areas (WHPA)

- Zone A - 100 m fixed radius around each well
- Zone B - 2 year time of travel
- Zone C - 5 year time of travel
- Zone D - 25 year time of travel
- Zone E - Recharge area for GUDI (Groundwater Under the Direct Influence) wells

Other Source Water Protection Features

- Municipal Well Supply
- Highly Vulnerable Aquifers (HVA)
- Significant Groundwater Recharge Areas (SGRA)

Road Network

- Provincial Highway
- County Road

Additional Features

- Municipal Boundary
- Lots and Concessions

NOTE: This map is prepared with data provided by the Conservation Authorities. The Conservation Authorities may update the data from time to time. The applicable Conservation Authority should be consulted for Source Water Protection requirements.

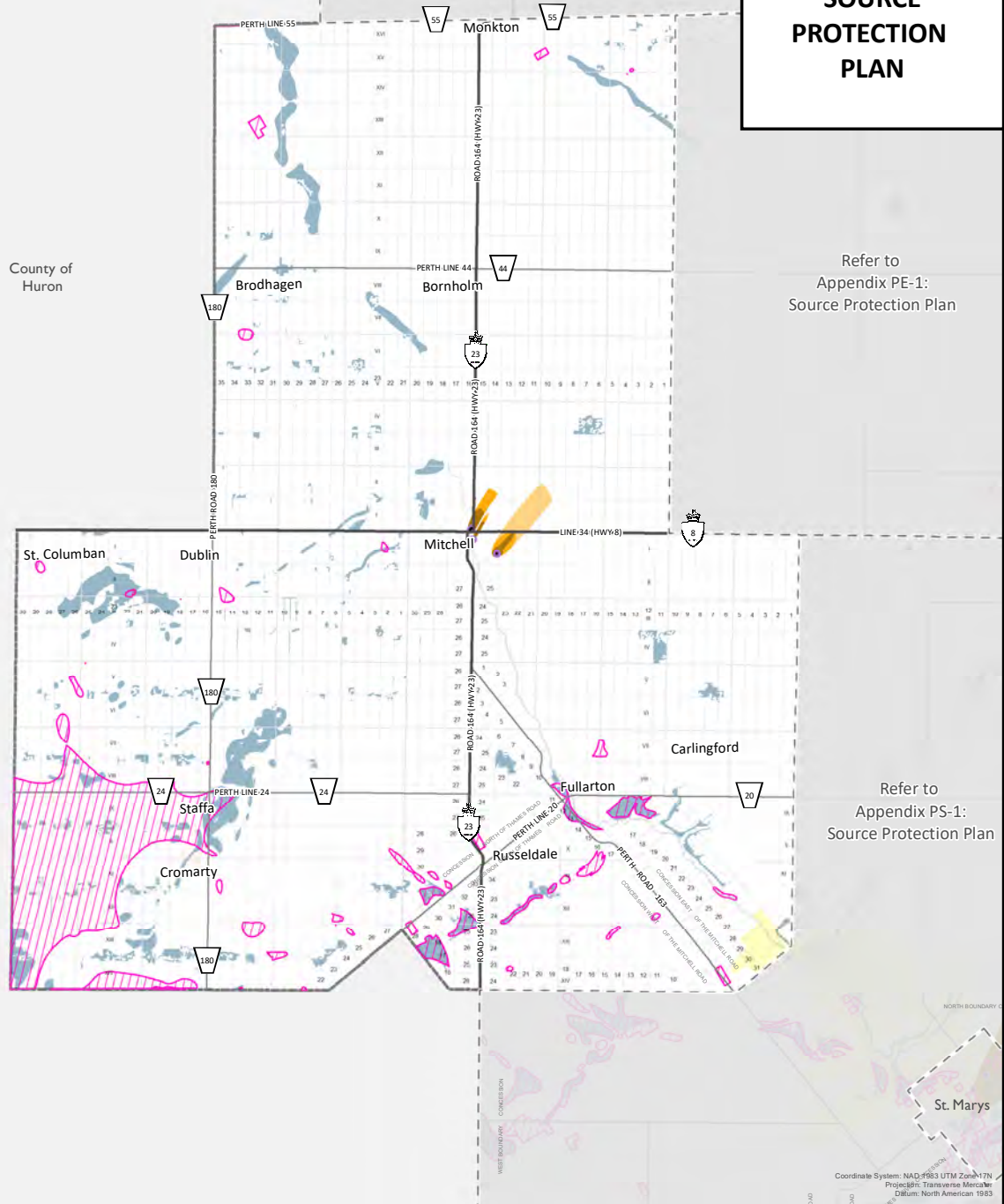
0 1.5 3 4.5 km
Scale 1:135,000
1 cm = 1 km



This schedule forms a part of the County of Perth Official Plan and must be read in conjunction with applicable policies of the Plan. For accurate reference recourse should be had to the original document and amendments hereto. The County of Perth does not warrant the accuracy, completeness, content, or currency of the information provided. Contains information licensed under the Open Government Licence – Ontario. This is not a legal Plan of Survey. © The Corporation of Perth County, 2024.

This map may incorporate data under license from:
© King's Printer for Ontario, 2024
© Maitland Valley Conservation Authority, 2024
© Upper Thames River Conservation Authority, 2024
© Grand River Conservation Authority, 2024
© Ausable Bayfield Conservation Authority, 2024

**APPENDIX WP-1:
SOURCE
PROTECTION
PLAN**



LEGEND

Wellhead Protection Areas (WHPA)

- Zone A - 100 m fixed radius around each well
- Zone B - 2 year time of travel
- Zone C - 5 year time of travel
- Zone D - 25 year time of travel
- Zone E - Recharge area for GUDI (Groundwater Under the Direct Influence) wells

Other Source Water Protection Features

- Municipal Well Supply
- Highly Vulnerable Aquifers (HVAs)
- Significant Groundwater Recharge Areas (SGRAs)

Road Network

- Provincial Highway
- County Road

Additional Features

- Municipal Boundary
- Lots and Concessions

0 1.5 3 4.5 km
Scale 1:135,000
1 cm = 1 km



NOTE: This map is prepared with data provided by the Conservation Authorities. The Conservation Authorities may update the data from time to time. The applicable Conservation Authority should be consulted for Source Water Protection requirements.

This schedule forms a part of the County of Perth Official Plan and must be read in conjunction with applicable policies of the Plan. For accurate reference recourse should be had to the original document and amendments hereto. The County of Perth does not warrant the accuracy, completeness, content, or currency of the information provided. Contains information licensed under the Open Government Licence – Ontario. This is not a legal Plan of Survey. © The Corporation of Perth County, 2024.

This map may incorporate data under license from:
© King's Printer for Ontario, 2024
© Maitland Valley Conservation Authority, 2024
© Upper Thames River Conservation Authority, 2024
© Grand River Conservation Authority, 2024
© Ausable Bayfield Conservation Authority, 2024