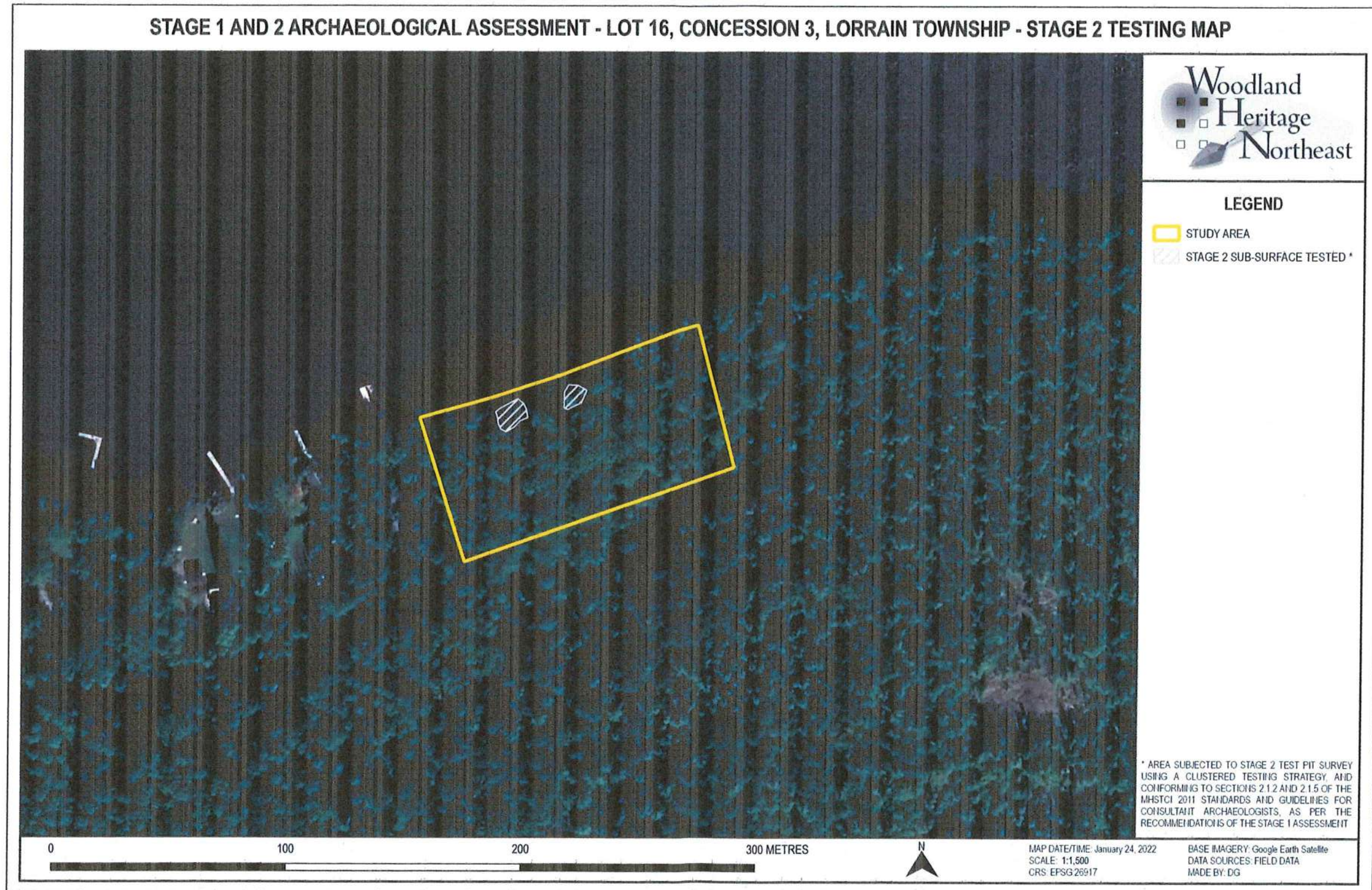
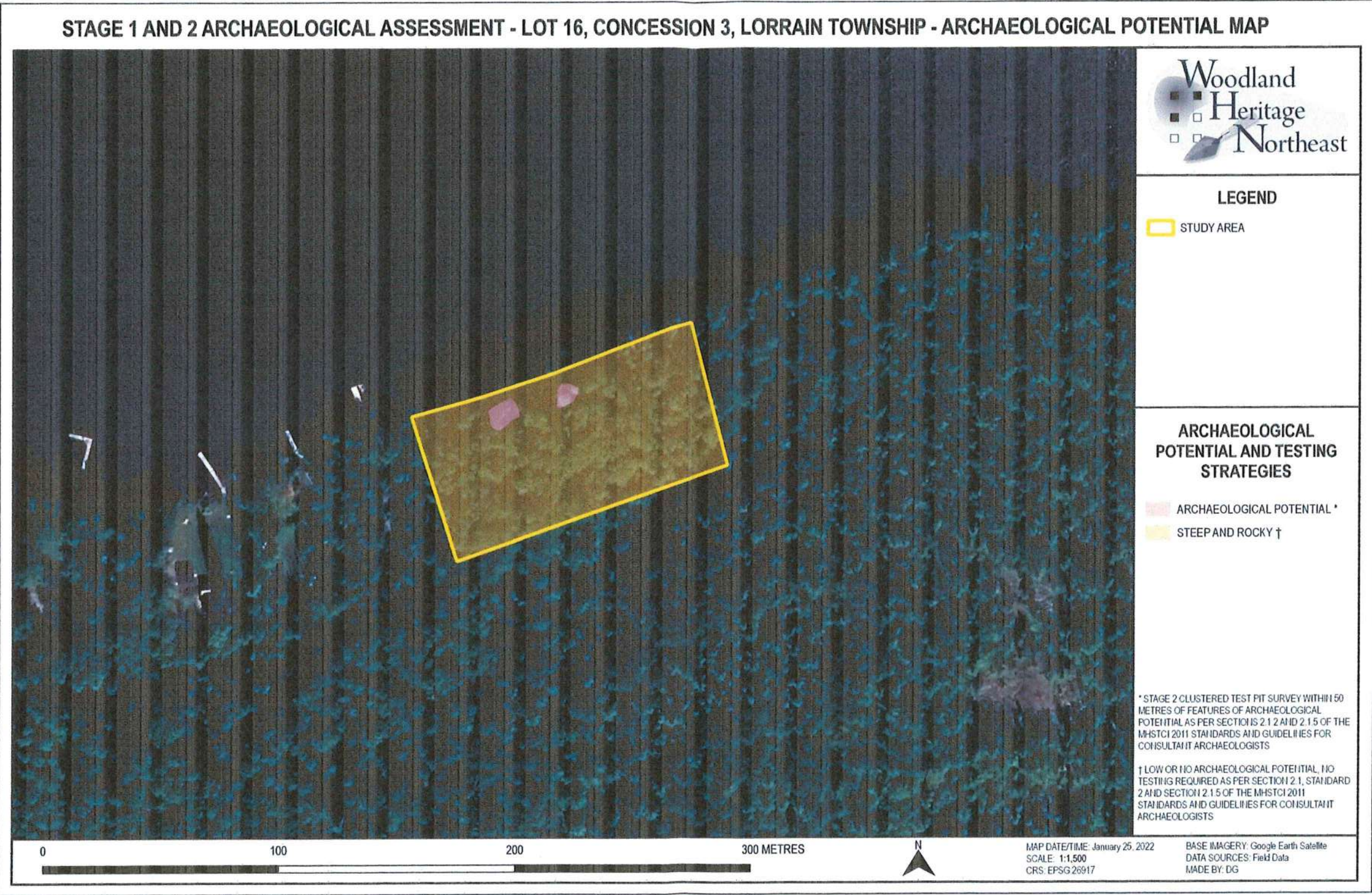


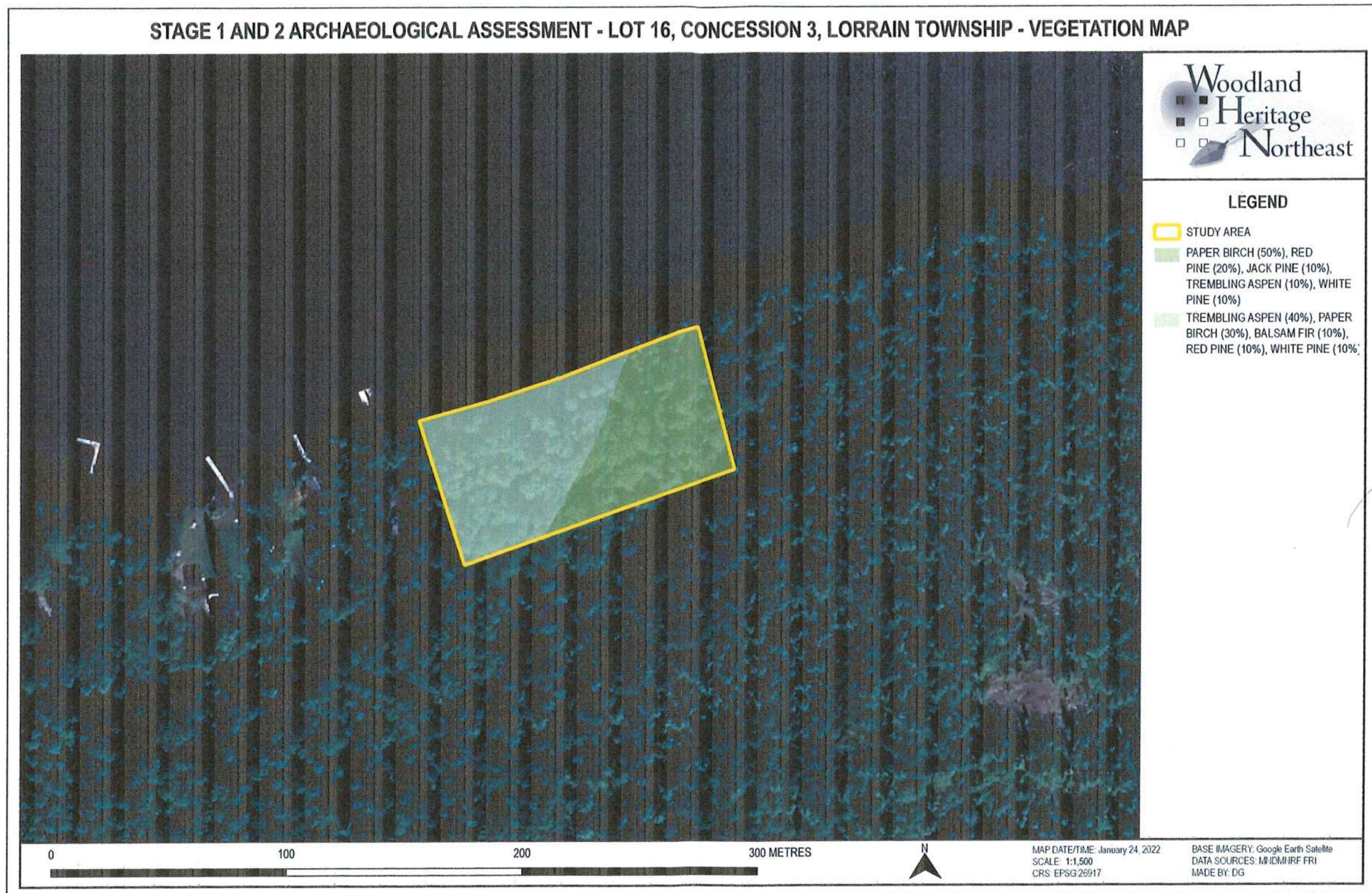
Map 9. Image location map showing the locations and directions of photographs taken during the course of the archaeological assessment and used in this report.



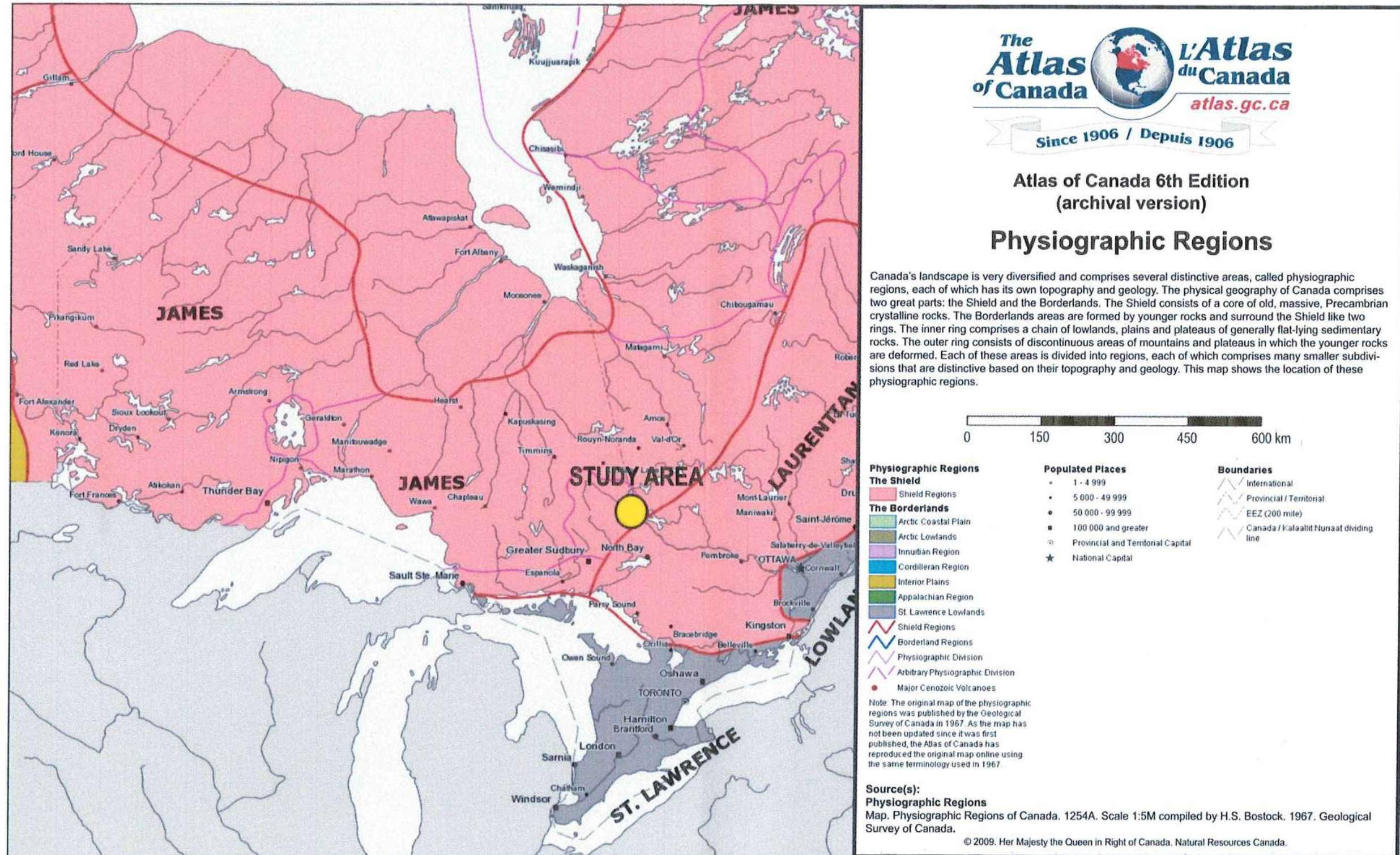
Map 8. Map showing the areas subjected to sub-surface testing during the Stage 2 assessment.



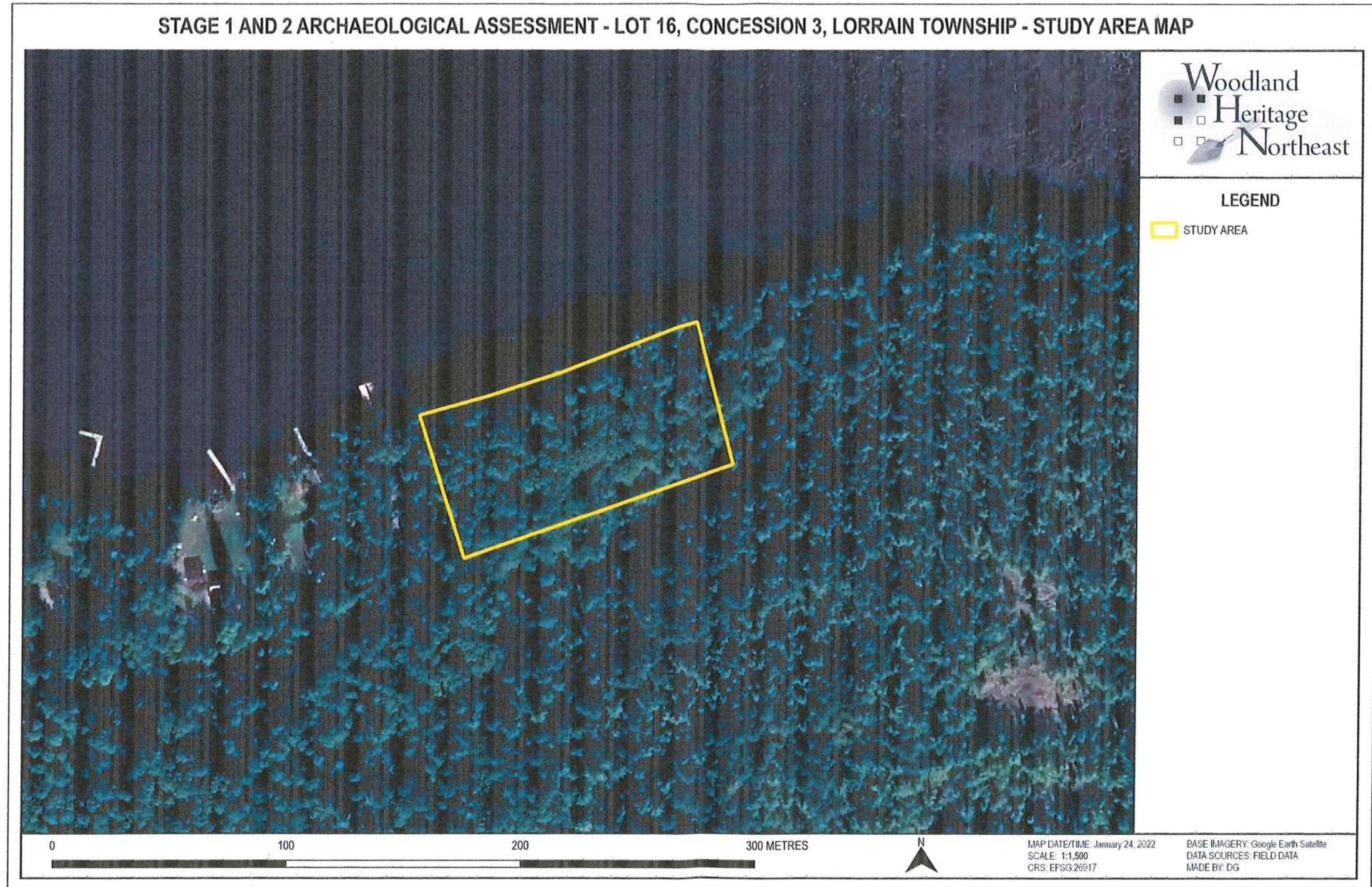
Map 7. Archaeological potential map showing the ground conditions and recommended assessment strategy in the study area.



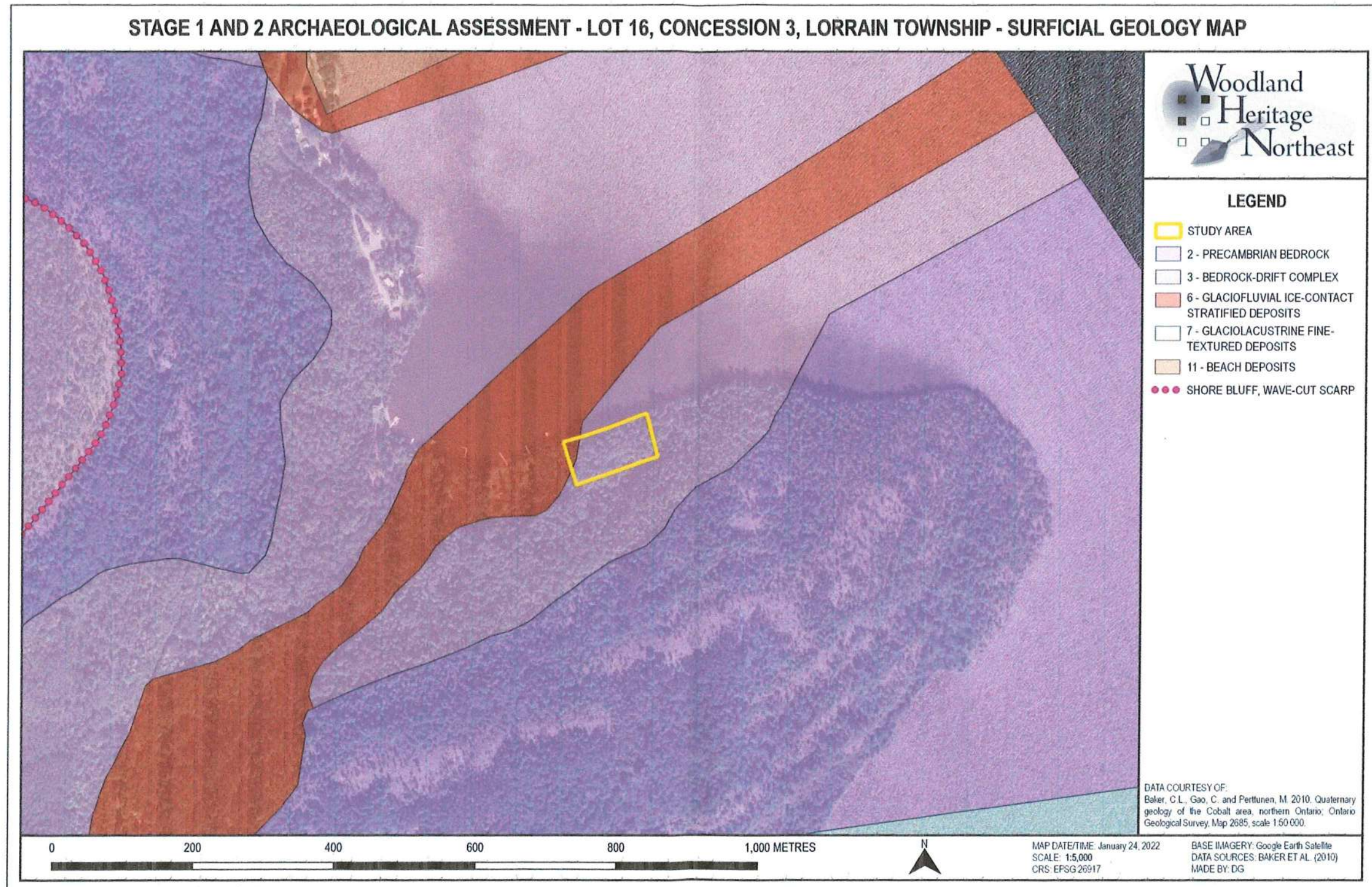
Map 6. Map showing the forest composition of the study area based on the MN DMNR FRI data.



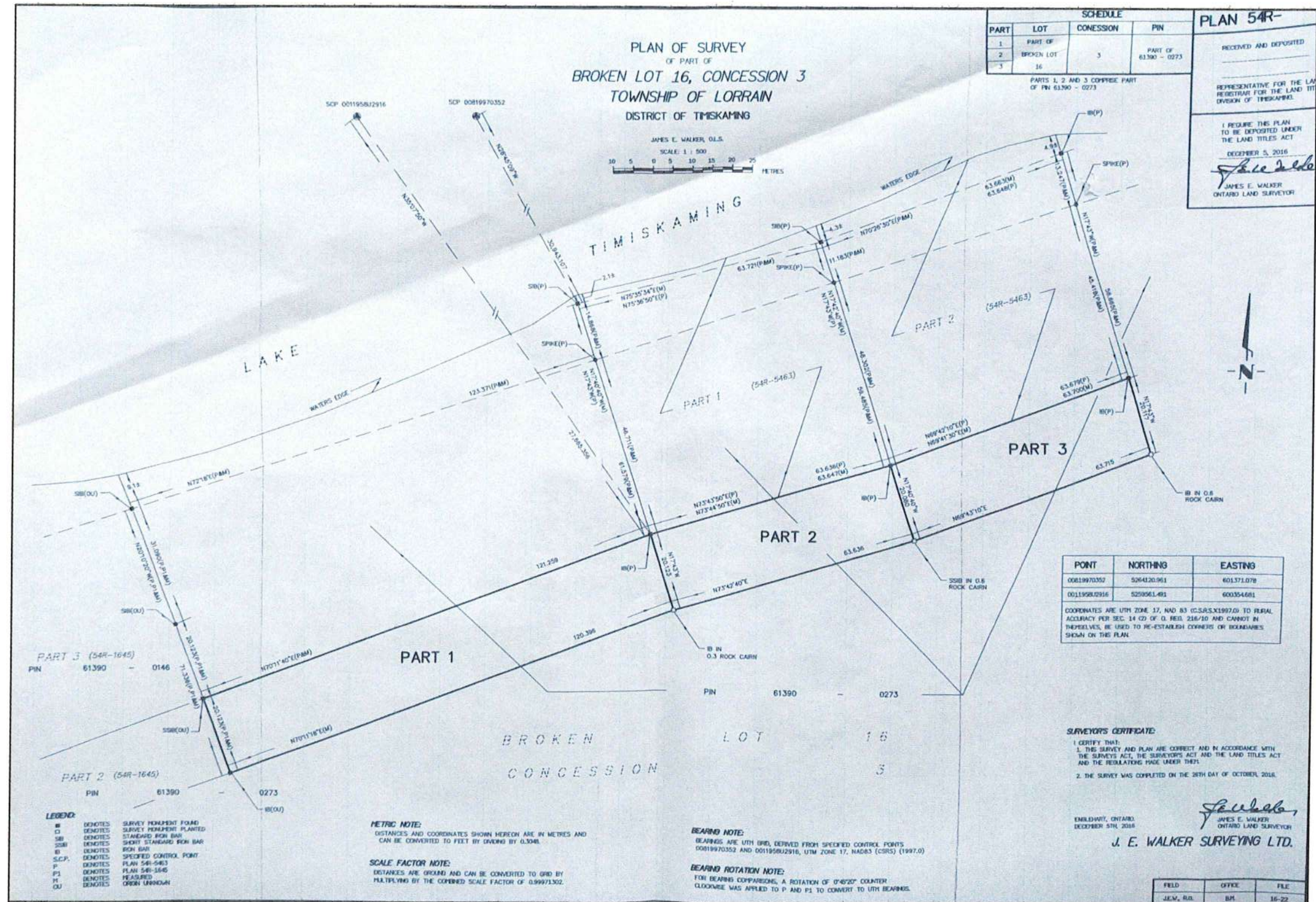
Map 5. Physiography map showing the study area situated on the James province of the Canadian Shield (pink) (Bostock 1967).



Map 3. Map showing the boundary of the study area based on information communicated to WHNE by the proponent and confirmed by the on-ground survey stakes.



Map 4. Map showing the surficial geological conditions in the study area and its surroundings.



Map 2. Unmodified development map provided by the proponent. The study area consists of all lands between "Part 1" and the lake (see following map).