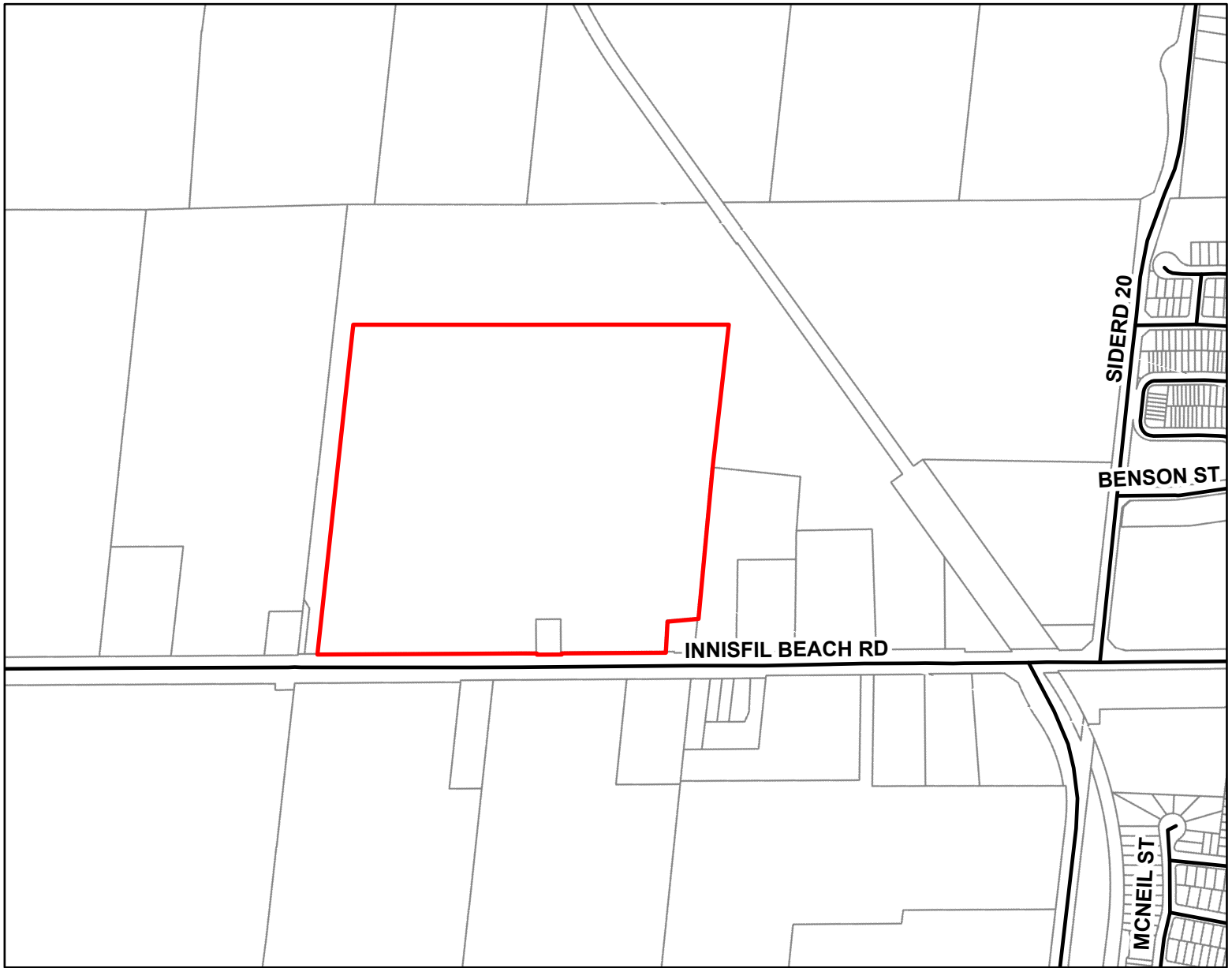


**Part of the South Half of Lot 19, Concession 8,
Innisfil, Town of Innisfil, County of Simcoe**



MAP NO. 380

Map filed at the office of the Ontario
Ministry of Municipal Affairs and Housing,
777 Bay St., Toronto, Ontario,

Planning Act

Ontario Regulation: 220/25

Date: September 19, 2025

Original Regulation Signed By: Minister of
Municipal Affairs and Housing

LEGEND

- Roads
- Parcels
- Subject Lands



Map North (Degrees):
18°E

0 70 140 280

Metres

1 cm equals 92 metres

Map Description:

The map represents no.380 referred to in a Minister's Zoning Order.
It shows lands located in, Part of the South Half of Lot 19, Concession 8,
Innisfil, Town of Innisfil, County of Simcoe.

We are committed to providing accessible customer service
(<https://www.ontario.ca/page/accessible-customer-service-policy>).

On request, we can arrange for accessible formats and communications supports.
Please contact MMAH by email (mininfo@ontario.ca) for regulation details.

THIS IS NOT A PLAN OF SURVEY

Information provided by the
Ministry of Municipal Affairs and Housing,
under licence with the
Ministry of Natural Resources.
© King's Printer for Ontario, 2025.