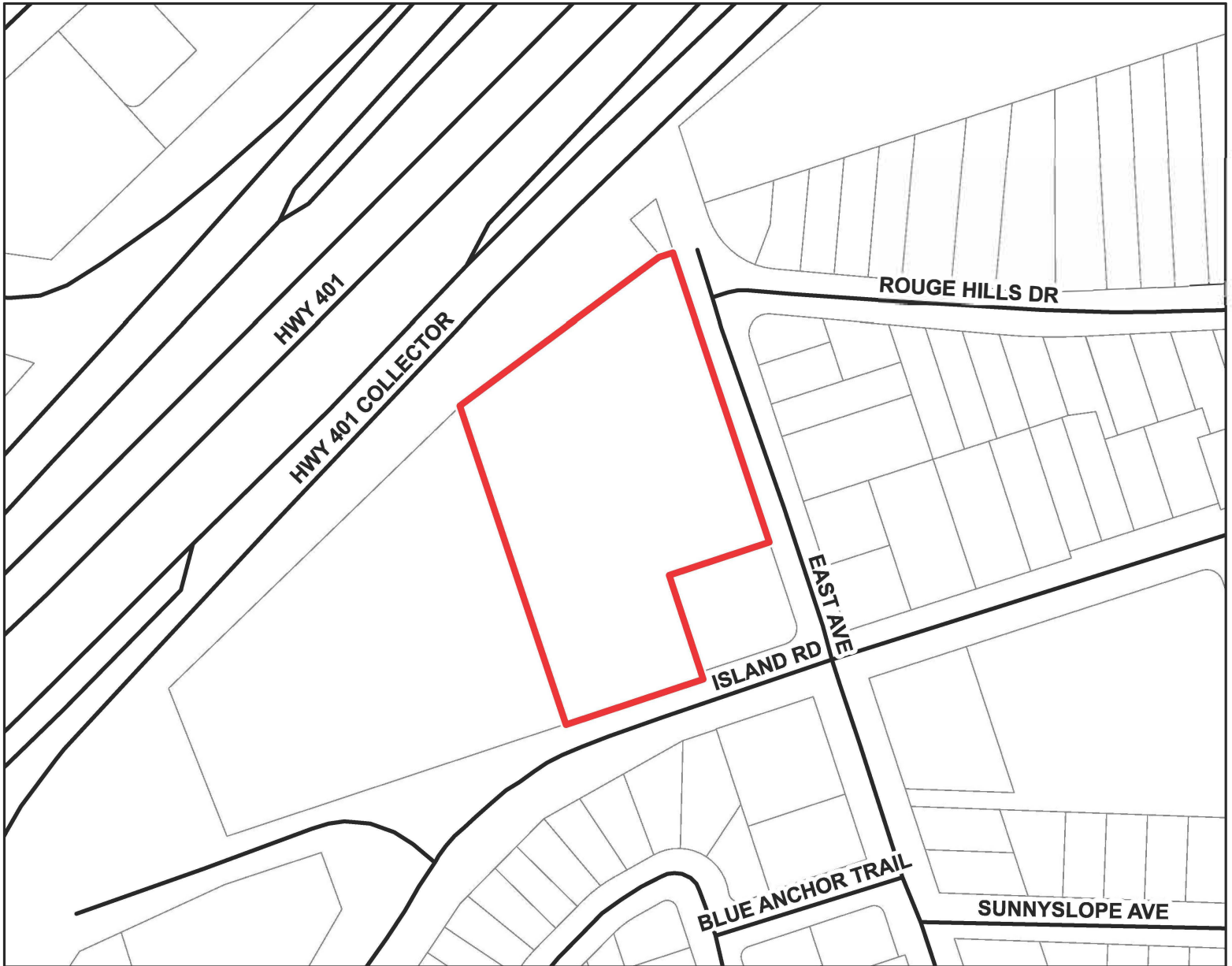


Part of Lot 35, Range 3 BFC, in the City of Toronto



MAP NO. 381




Map filed at the office of the Ontario
Ministry of Municipal Affairs and
Housing, 777 Bay St., Toronto, Ontario,
Planning Act

Ontario Regulation: 229/25

Date: October 3, 2025

Original Regulation Signed By: Minister
of Municipal Affairs and Housing

LEGEND

-  Roads
-  Parcels
-  Subject Land



Map North (Degrees): 0°

0 20 40 80

Metres

1 cm equals 27 metres

Map Description:

The map represents no. 381 referred to in a Minister's Zoning Order. It shows lands located in, Part of Lot 35, Range 3 BFC, in the City of Toronto. We are committed to providing accessible customer service (<https://www.ontario.ca/page/accessible-customer-service-policy>). On request, we can arrange for accessible formats and communications supports. Please contact MMAH by email (mininfo@ontario.ca) for regulation details.

THIS IS NOT A PLAN OF SURVEY

Information provided by the
Ministry of Municipal Affairs and Housing,
under licence with the
Ministry of Natural Resources.
© King's Printer for Ontario, 2025.