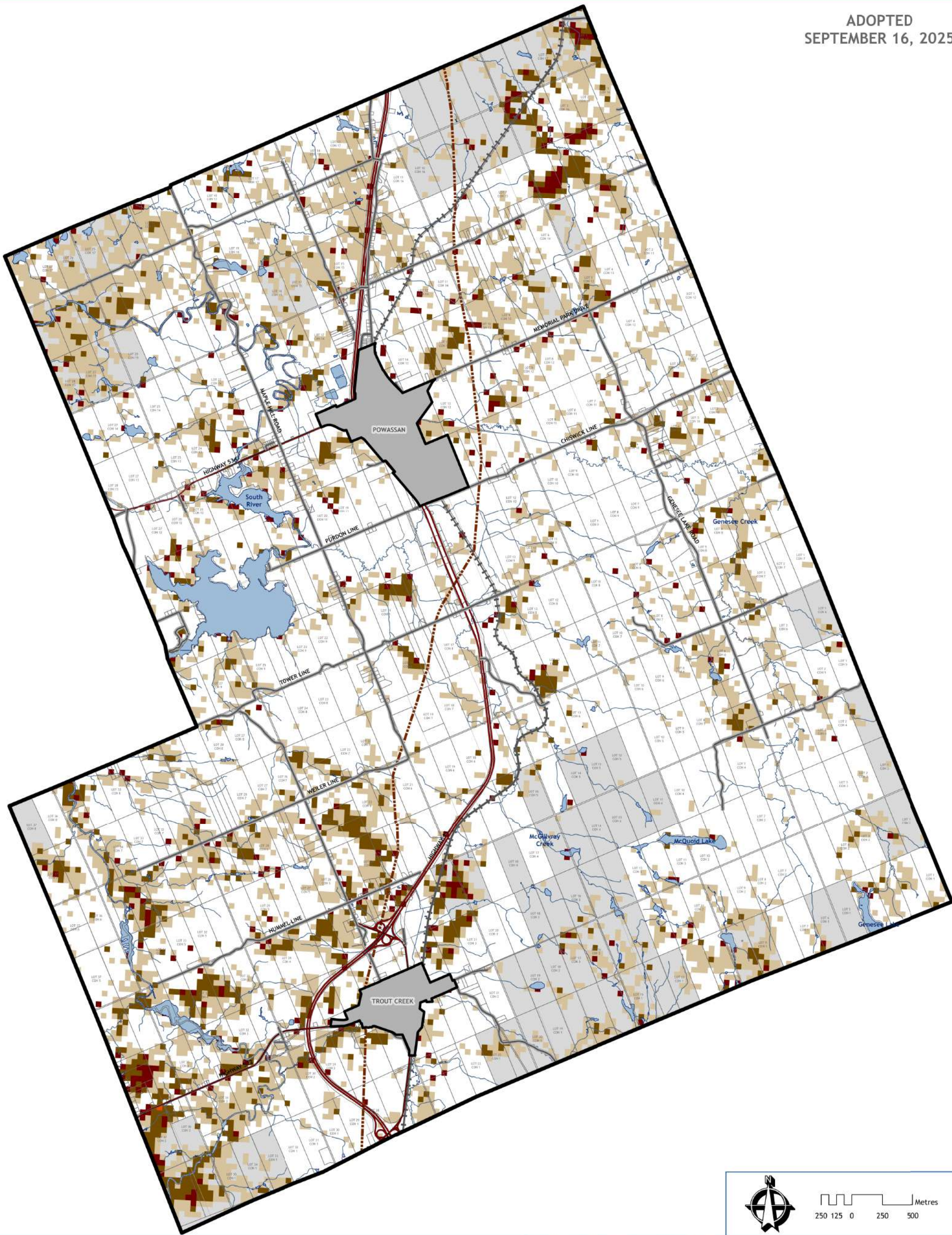


WILDLAND FIRE HAZARD AREAS  
APPENDIX '1'

ADOPTED  
SEPTEMBER 16, 2025



WILDLAND FIRE - MNR

- EXTREME
- HIGH
- NEEDS EVALUATION
- MODERATE

- CROWN LAND
- POWASSAN URBAN SERVICE AREA
- TROUT CREEK SETTLEMENT AREA

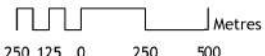

- PROVINCIAL HIGHWAY
- MUNICIPAL ROADS
- PIPELINE
- RAILWAY
- STREAMS / RIVERS
- WATERBODIES

Hazardous forest types for wildland fire means forest types assessed as being associated with the risk of high to extreme wildland fire.

Ontario Geohub Fire - Potential Hazardous Forest Types for Wildland Fire is intended to help inform where further assessment is required and is to be used in conjunction with guidance from the Ministry of Natural Resources and Forestry.


Data is updated on an annual basis.

Source: Fire - Potential Hazardous Forest Types for Wildland Fire - Overview



The information displayed on this map has been compiled from various sources. While every effort has been made to accurately depict the information, this map should not be relied on as being a precise indicator of locations. Copyright The Municipality of Powassan, 2025. All rights reserved.

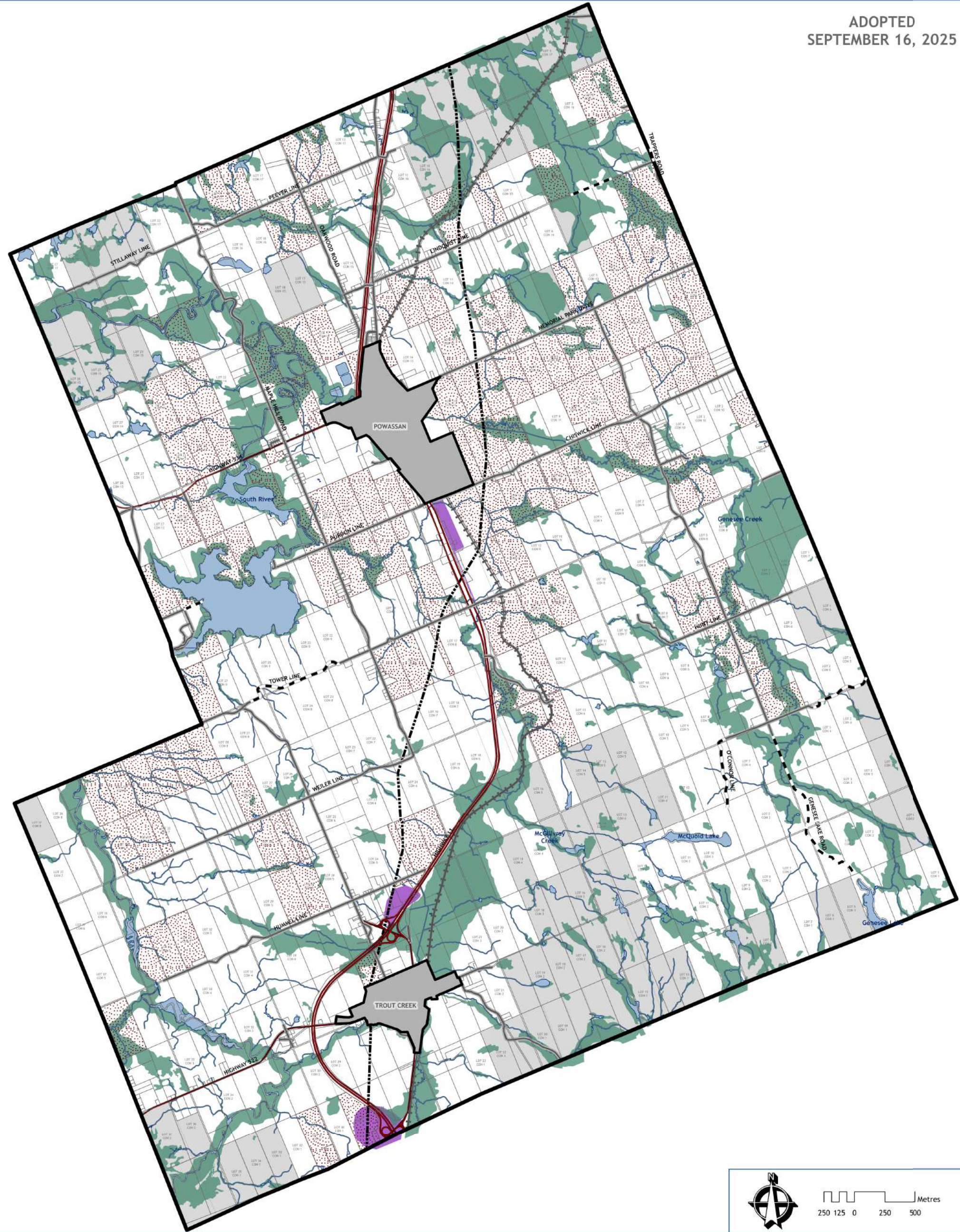
May not be reproduced without permission. This is not survey data.



**PLANScape**  
BUILDING COMMUNITY THROUGH PLANNING

ADOPTED

SEPTEMBER 16, 2025



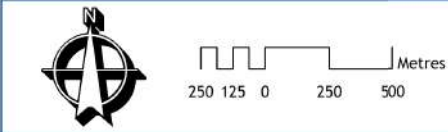
LAND USE DESIGNATIONS

- AGRICULTURAL
- RURAL
- HIGHWAY COMMERCIAL
- OPEN SPACE
- CROWN LAND

- STREAMS / RIVERS
- WATERBODIES
- POWASSAN URBAN SERVICE AREA
- TROUT CREEK SETTLEMENT AREA

TRANSPORTATION & INFRASTRUCTURE

- PROVINCIAL HIGHWAY
- MUNICIPAL ROADS
- SEASONAL MAINTAINED ROADS
- PIPELINE
- RAILWAY

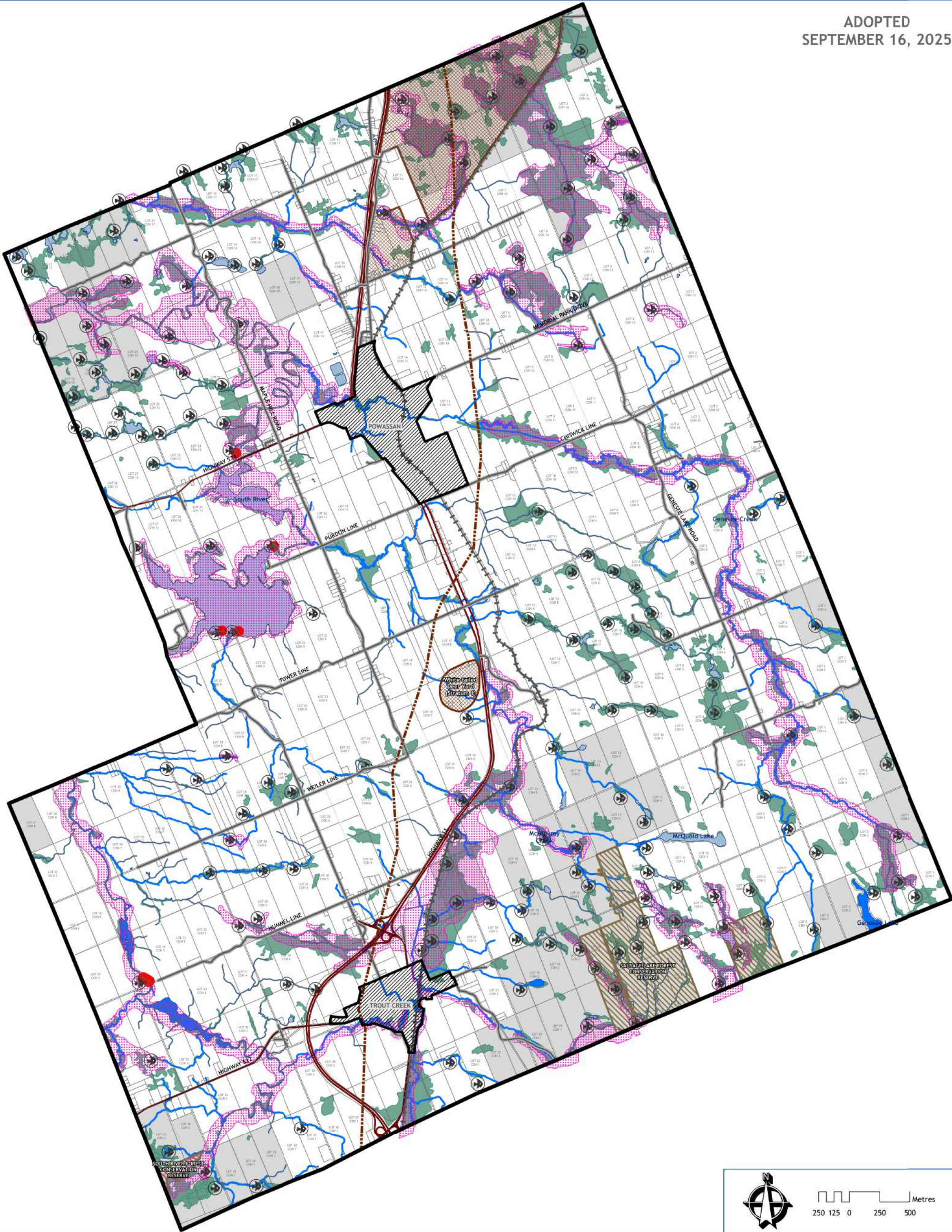


The information displayed on this map has been compiled from various sources. While every effort has been made to accurately depict the information, this map should not be relied on as being a precise indicator of locations. Copyright The Municipality of Powassan, 2023. All rights reserved.

May not be reproduced without permission. This is not survey data.

ADOPTED

SEPTEMBER 16, 2025



- SETTLEMENT AREAS

NATURAL FEATURES

CONSERVATION RESERVE

WETLAND - NOT EVALUATED per OWES

FLOODPLAIN

WILDLIFE ACTIVITY AREA
- FISH SPAWNING - MUNICIPAL

FISH SPAWNING - PROVINCIAL

STREAMS / RIVERS

COLD WATER STREAMS

WATERBODIES

COLD WATER LAKES
- PROVINCIAL HIGHWAY

MUNICIPAL ROADS

CROWN LAND

Metres  
250 125 0 250 500

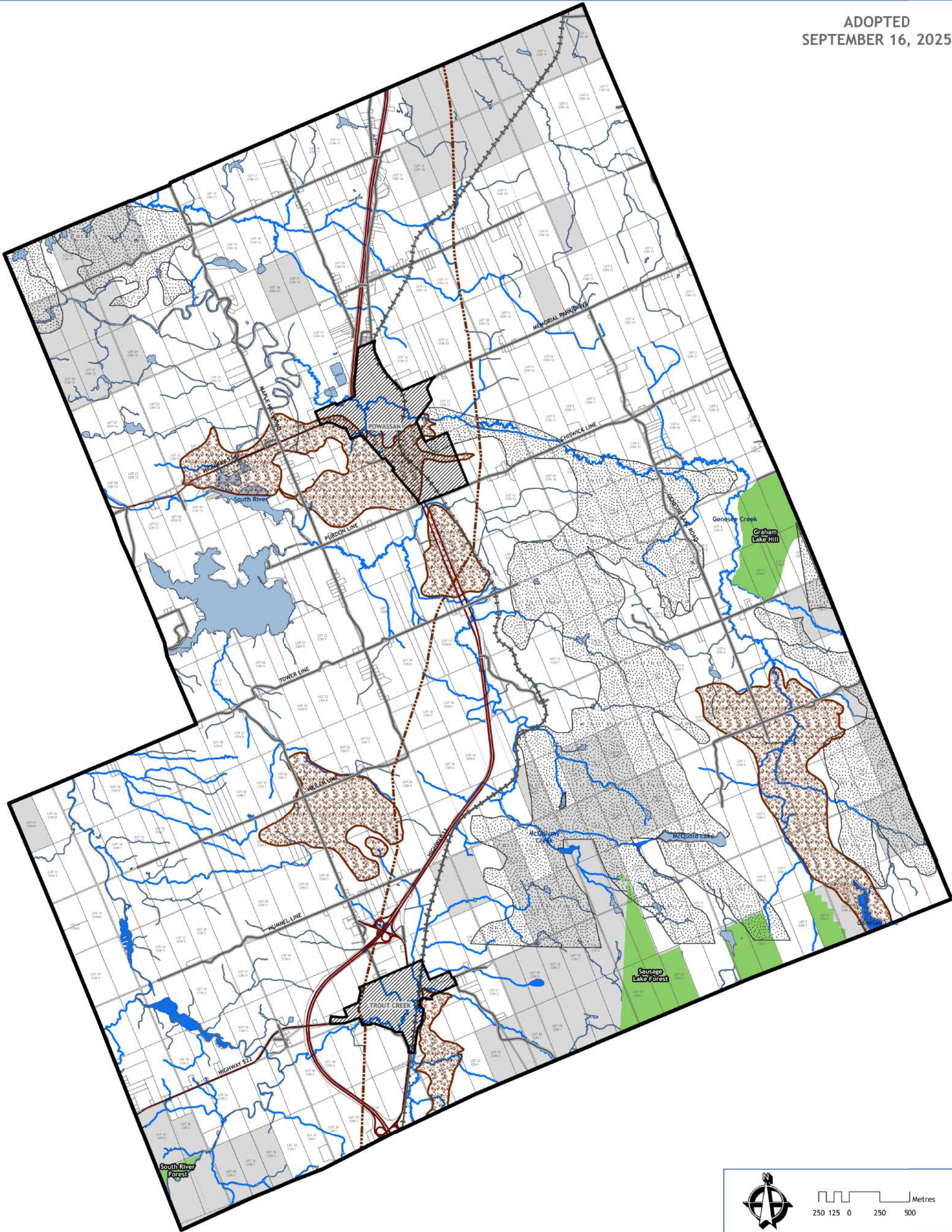
The information displayed on this map has been compiled from various sources. While every effort has been made to accurately depict the information, this map should not be relied on as being a precise indicator of locations. Copyright The Municipality of Powassan, 2025. All rights reserved.

May not be reproduced without permission. This is not survey data.

PLANScape  
BUILDING COMMUNITY THROUGH PLANNING

ADOPTED

SEPTEMBER 16, 2025



SETTLEMENT AREAS

ANSI - EARTH & LIFE SCIENCE AREAS

RESOURCES

BEDROCK RESOURCES

SAND & GRAVEL RESOURCE AREAS

CROWN LAND

MUNICIPAL ROADS

PROVINCIAL HIGHWAY

STREAMS / RIVERS

COLD WATER STREAMS

WATERBODIES

COLD WATER LAKES

BEDROCK DATA NOT AVAILABLE AROUND TROUT CREEK AREA

Metres

250 125 0 250 500

The information displayed on this map has been compiled from various sources. While every effort has been made to accurately depict the information, this map should not be relied on as being a precise indicator of locations. Copyright The Municipality of Powassan, 2025. All rights reserved.

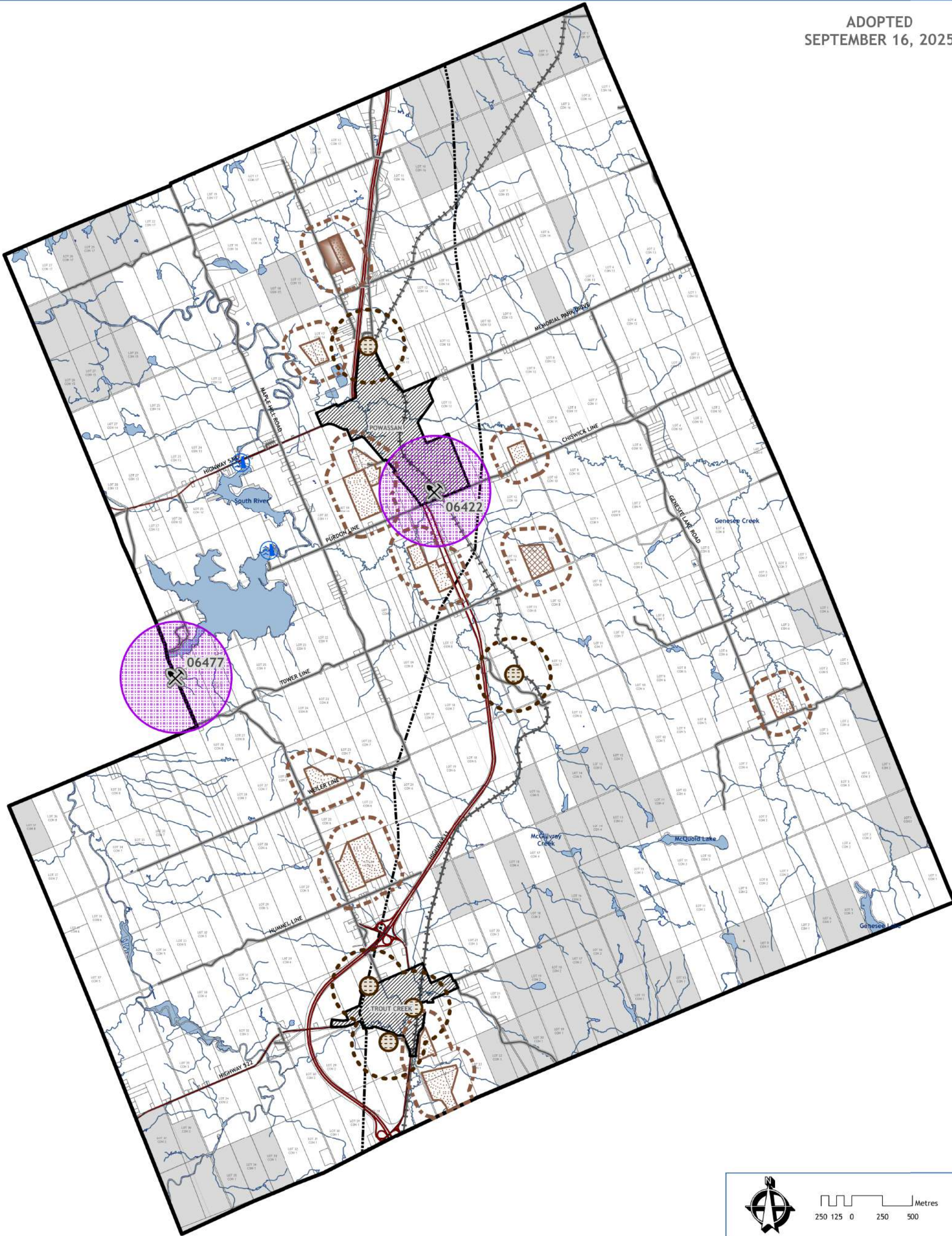
May not be reproduced without permission. This is not survey data.

PLANScape

BUILDING COMMUNITY THROUGH PLANNING

ADOPTED

SEPTEMBER 16, 2025



SETTLEMENT AREAS

ABANDONED MINES

AMIS 1 KM BUFFER

CONTAMINATED SITES

CONTAMINATED SITE 500m BUFFER

PIT & QUARRY

PIT

QUARRY

INFLUENCE AREA 300m BUFFER

ONTARIO POWER GENERATION DAM

PIPELINE

RAILWAY

CROWN LAND

STREAMS / RIVERS

WATERBODIES

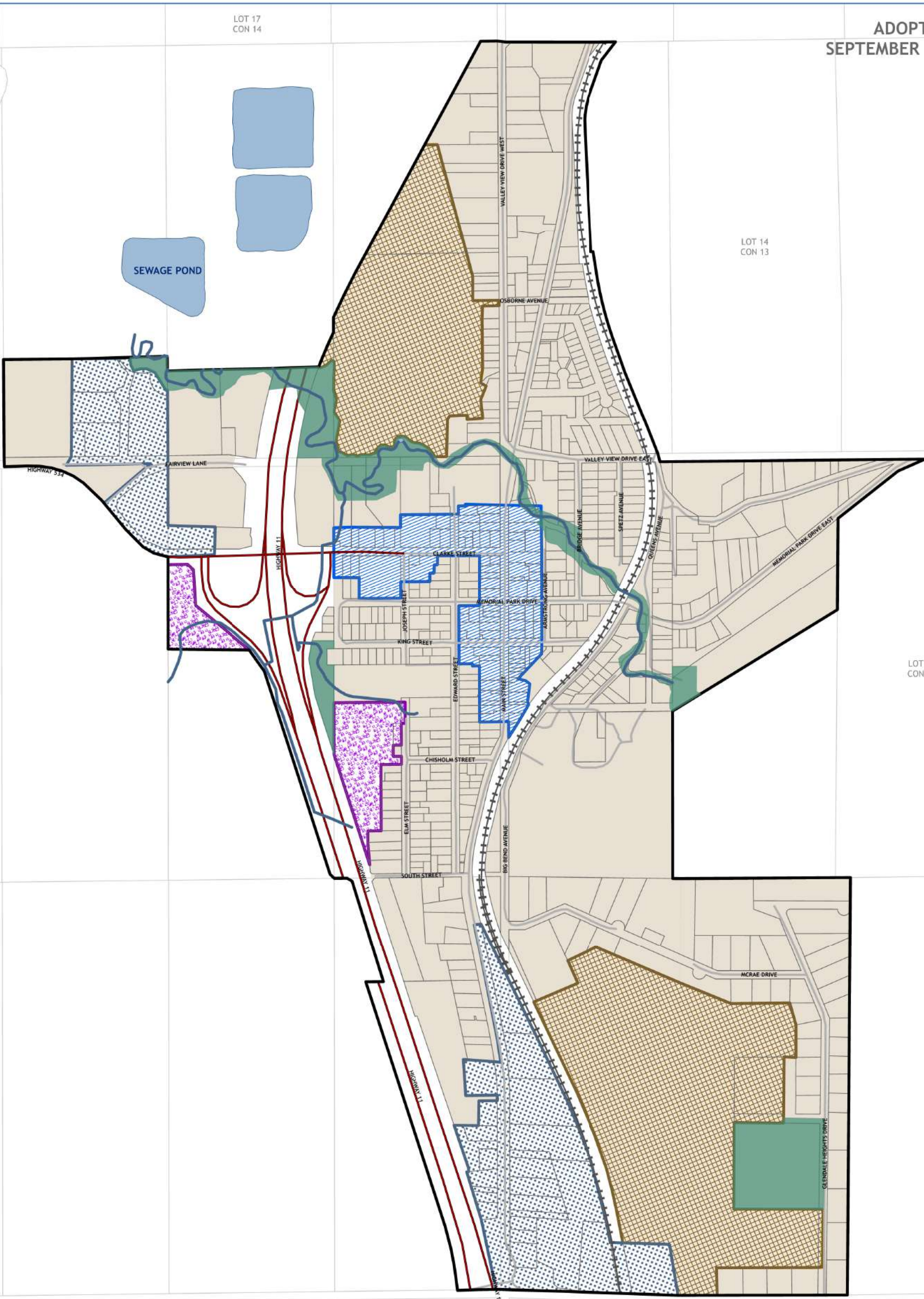
The information displayed on this map has been compiled from various sources. While every effort has been made to accurately depict the information, this map should not be relied on as being a precise indicator of locations. Copyright The Municipality of Powassan, 2025. All rights reserved.

May not be reproduced without permission. This is not survey data.

PLANScape  
BUILDING COMMUNITY THROUGH PLANNING

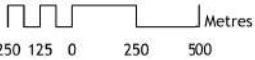
ADOPTED

SEPTEMBER 16, 2025



LAND USE DESIGNATIONS

- |                    |                    |                  |
|--------------------|--------------------|------------------|
| RESIDENTIAL        | HIGHWAY COMMERCIAL | STREAMS / RIVERS |
| FUTURE RESIDENTIAL | PROVINCIAL HIGHWAY | WATERBODIES      |
| DOWNTOWN           | MUNICIPAL ROADS    |                  |
| BUSINESS PARK      | RAILWAY            |                  |
| OPEN SPACE         |                    |                  |



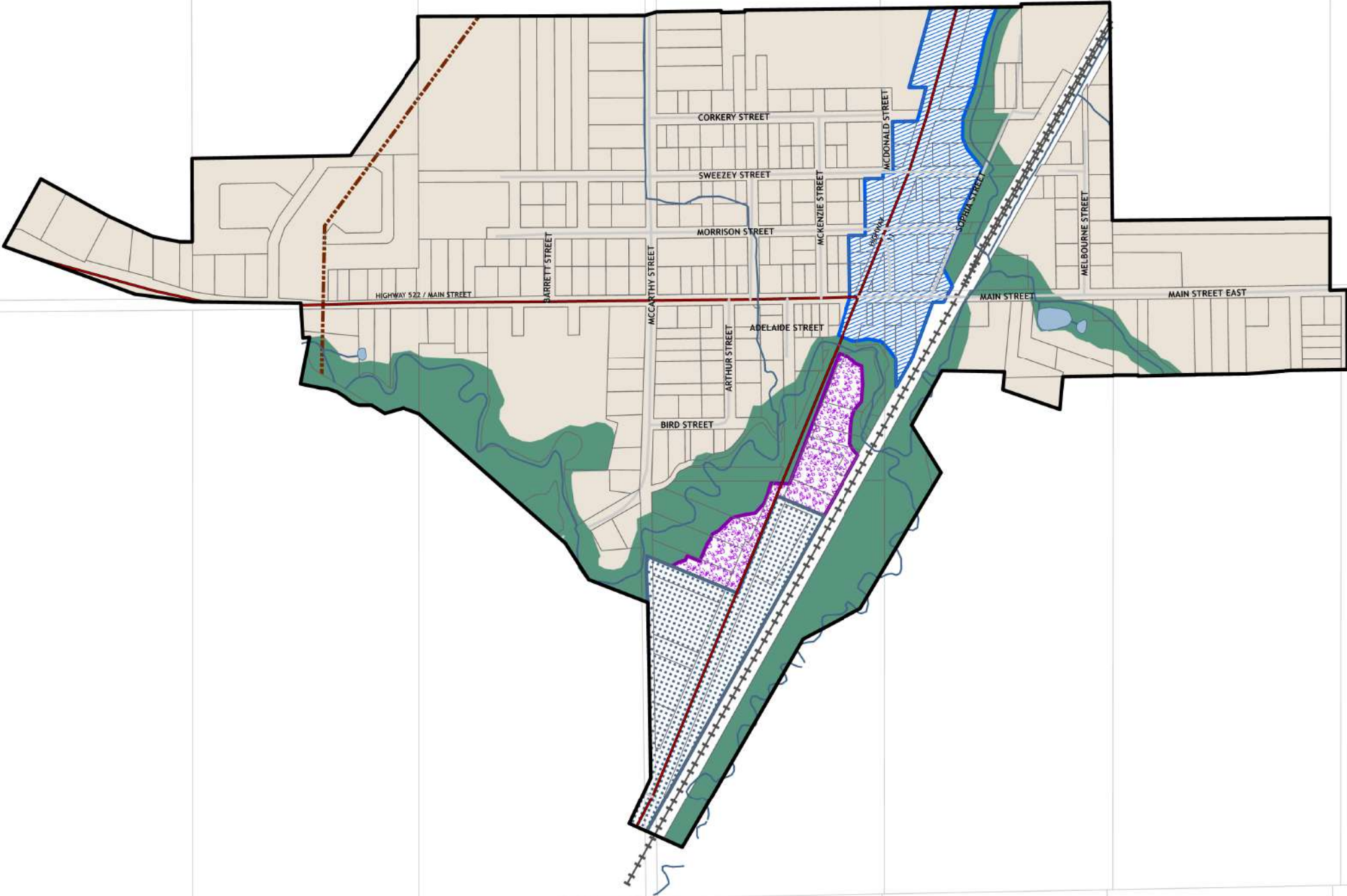
The information displayed on this map has been compiled from various sources. While every effort has been made to accurately depict the information, this map should not be relied on as being a precise indicator of locations. Copyright The Municipality of Powassan, 2025. All rights reserved.

May not be reproduced without permission. This is not survey data.



ADOPTED

SEPTEMBER 16, 2025



LAND USE DESIGNATIONS

- |                    |                    |                  |
|--------------------|--------------------|------------------|
| RESIDENTIAL        | PROVINCIAL HIGHWAY | STREAMS / RIVERS |
| DOWNTOWN           | MUNICIPAL ROADS    | WATERBODIES      |
| BUSINESS PARK      | PIPELINE           |                  |
| OPEN SPACE         | RAILWAY            |                  |
| HIGHWAY COMMERCIAL |                    |                  |

The information displayed on this map has been compiled from various sources. While every effort has been made to accurately depict the information, this map should not be relied on as being a precise indicator of locations. Copyright The Municipality of Powassan, 2025. All rights reserved.

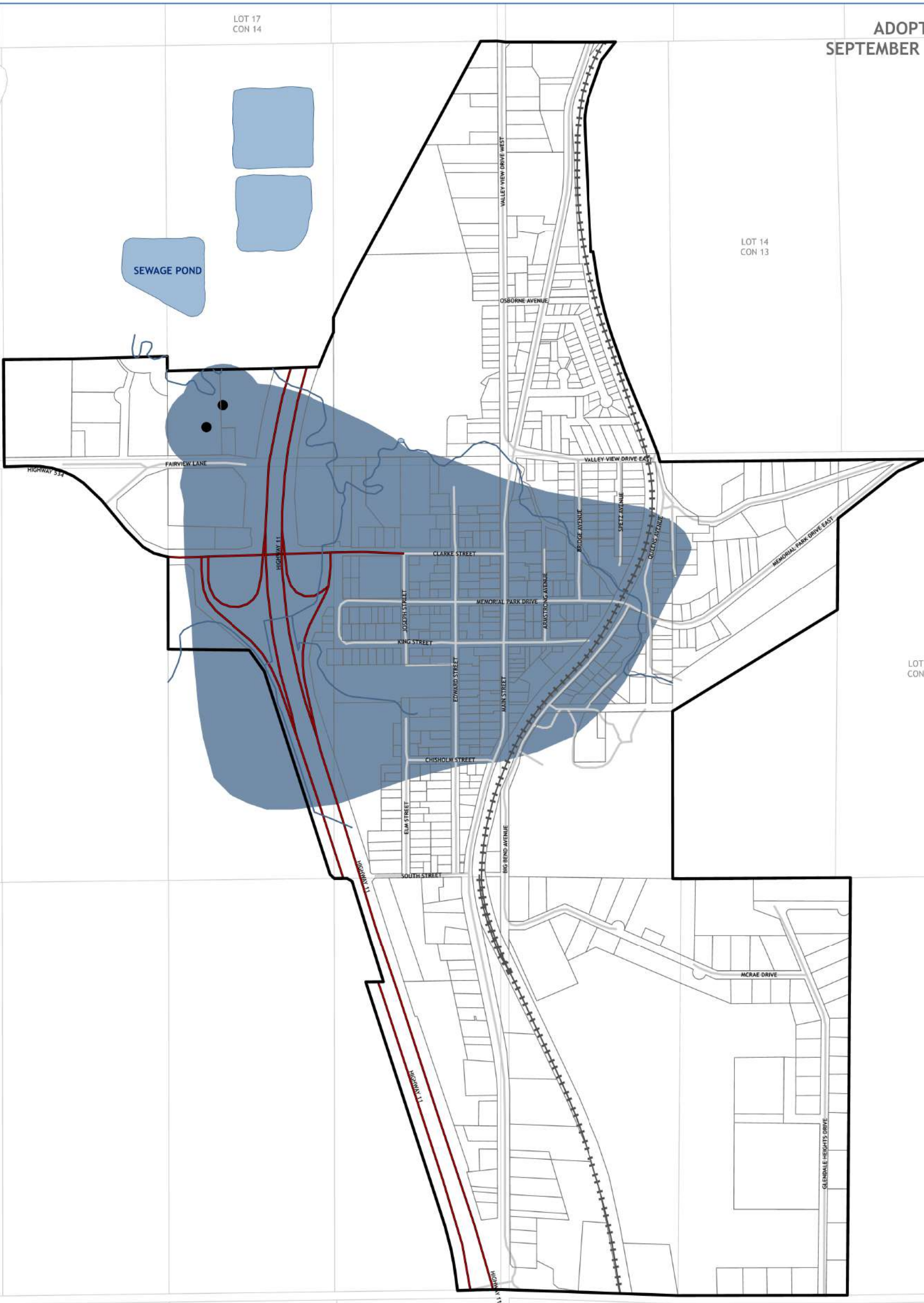
May not be reproduced without permission. This is not survey data.

PLANScape

BUILDING COMMUNITY THROUGH PLANNING

ADOPTED

SEPTEMBER 16, 2025



WELLHEAD PROTECTION AREA

- DRINKING WATER INTAKE
- WELLHEAD PROTECTION AREA
- PROVINCIAL HIGHWAY
- MUNICIPAL ROADS
- +++++

 RAILWAY
- STREAMS / RIVERS
- WATERBODIES

The information displayed on this map has been compiled from various sources. While every effort has been made to accurately depict the information, this map should not be relied on as being a precise indicator of locations.

Copyright The Municipality of Powassan, 2025. All rights reserved.

May not be reproduced without permission.  
This is not survey data.

Source: North Bay-Mattawa Conservation Authority  
Source Protection Plan - Approved March 5, 2015  
[https://oactforcleanwater.ca/media/1017/nbm\\_sp-plan-approved-20150305.pdf](https://oactforcleanwater.ca/media/1017/nbm_sp-plan-approved-20150305.pdf)

PLANScape  
BUILDING COMMUNITY THROUGH PLANNING