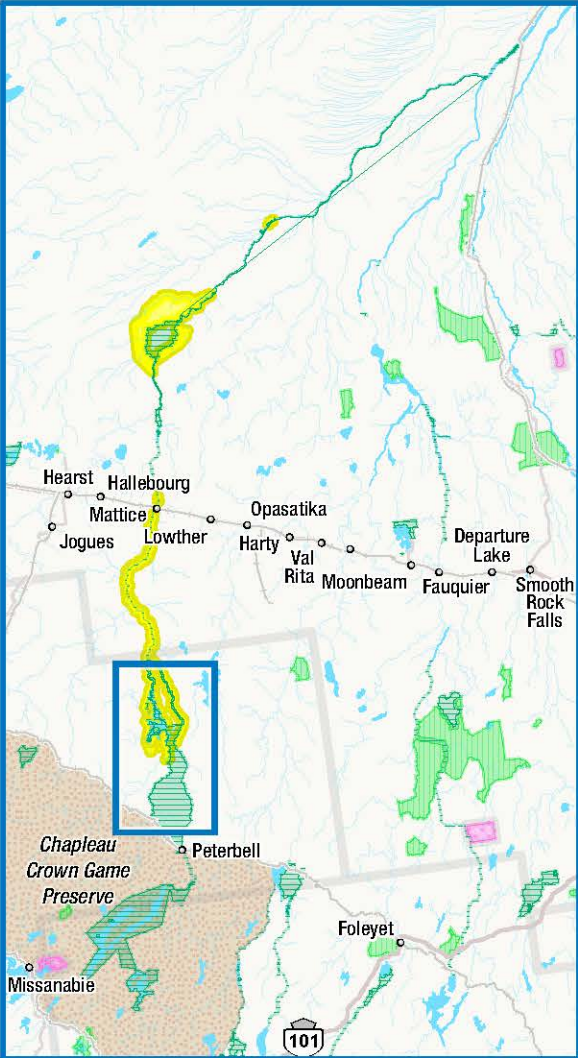


Missinaibi Provincial Park and proposed additions (Map 1 of 7)



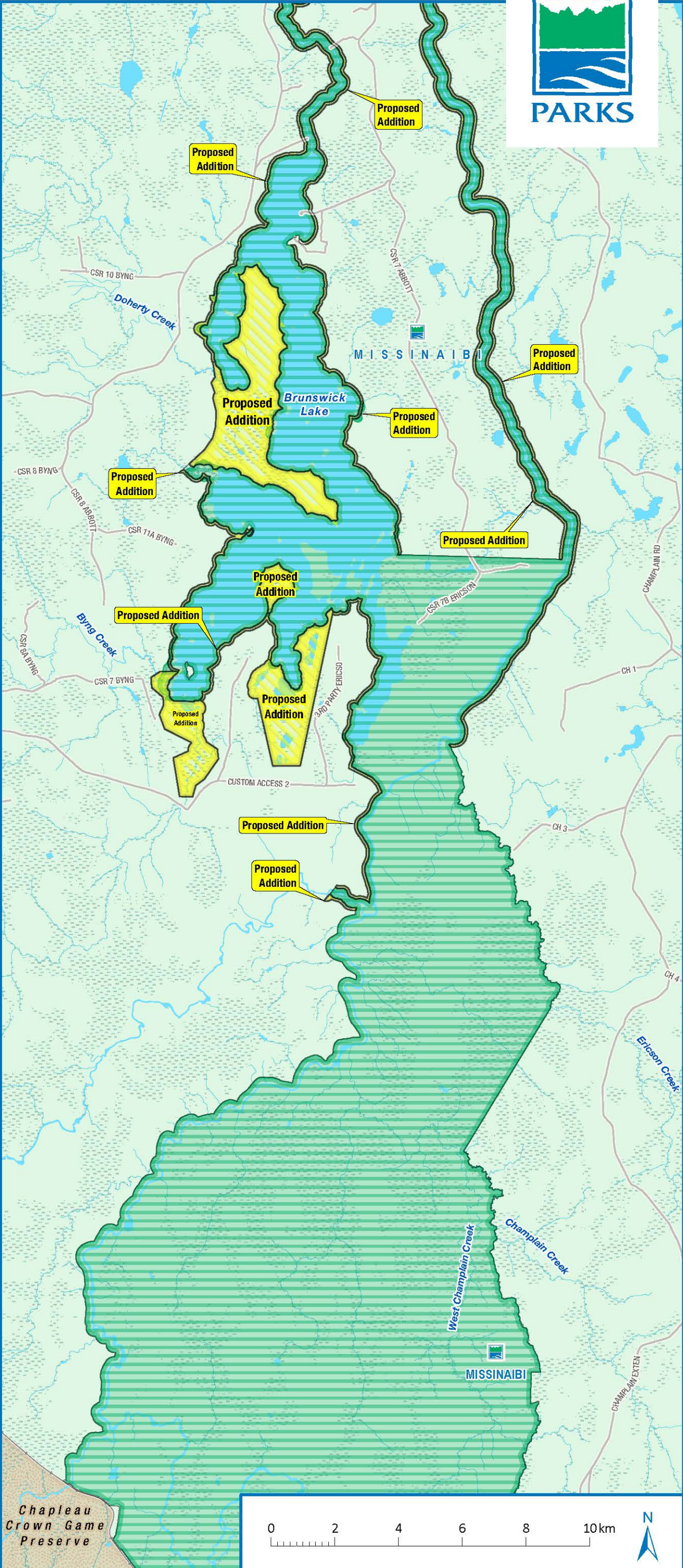
- Proposed Addition
- Roads
- Railway
- Regulated Provincial Park
- Crown Game Preserve
- Wetland

This map should not be relied on as a precise indicator of routes or locations nor as a guide to navigation. The Ontario Ministry of the Environment, Conservation and Parks (MECP) shall not be liable in any way for the use of, or reliance upon, this map or any information on this map.

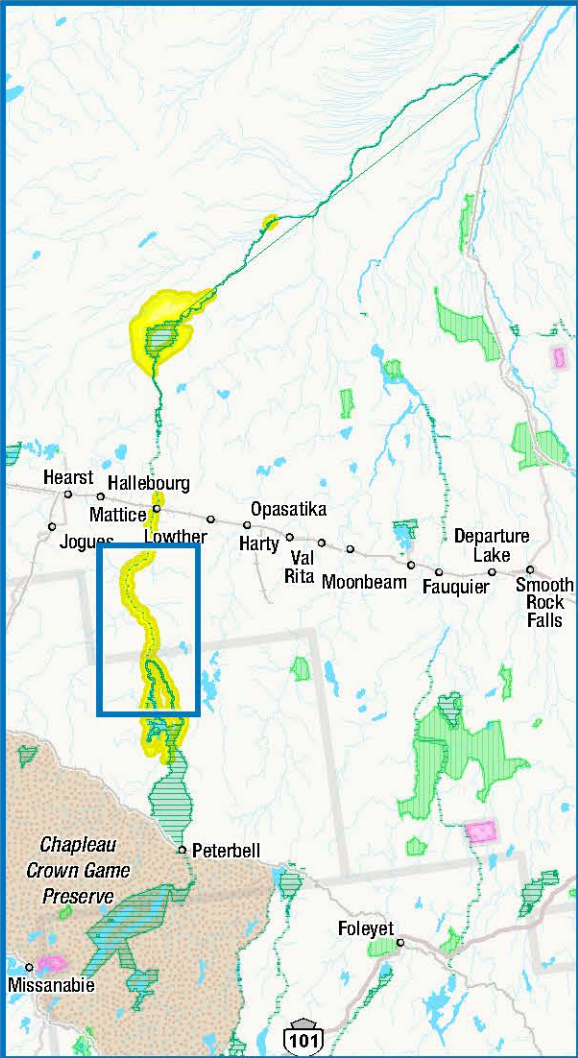
If you need the information in an alternate format, please send your request to [protected\\_areas@ontario.ca](mailto:protected_areas@ontario.ca).

Produced by Ontario Parks. Data Sources: Protected Area Boundary Data - Ontario Parks; Base Data - Land Information Ontario. Projected Coordinate System: NAD 1983 UTM Zone 17N. Geographic Coordinate System: GCS North American 1983.

© King's Printer for Ontario and its licensors 2024.  
Date Published: 07/09/2024.  
MAY NOT BE REPRODUCED WITHOUT PERMISSION. THIS IS NOT A PLAN OF SURVEY.







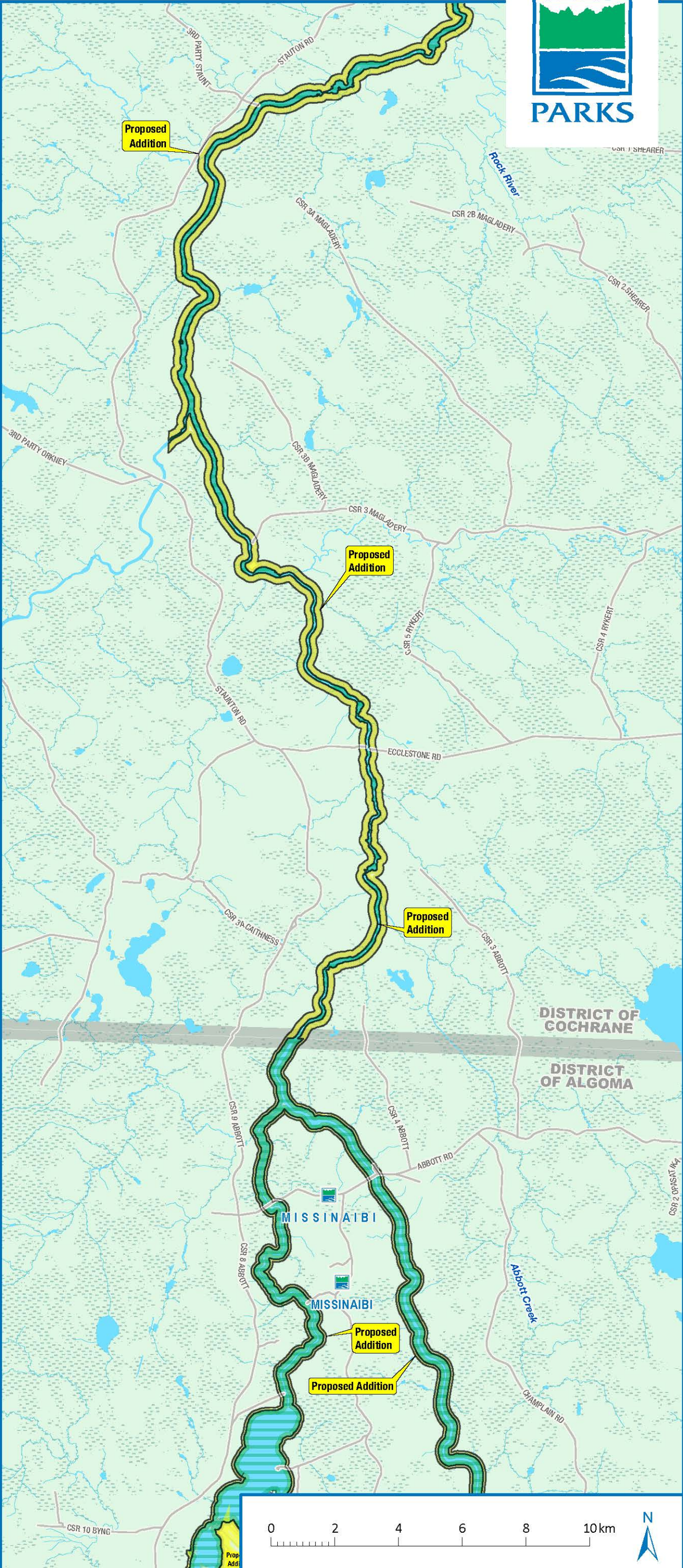
- Proposed Addition
- Roads
- Regulated Provincial Park
- Wetland

This map should not be relied on as a precise indicator of routes or locations nor as a guide to navigation. The Ontario Ministry of the Environment, Conservation and Parks (MECP) shall not be liable in any way for the use of, or reliance upon, this map or any information on this map.

If you need the information in an alternate format, please send your request to [protected\\_areas@ontario.ca](mailto:protected_areas@ontario.ca).

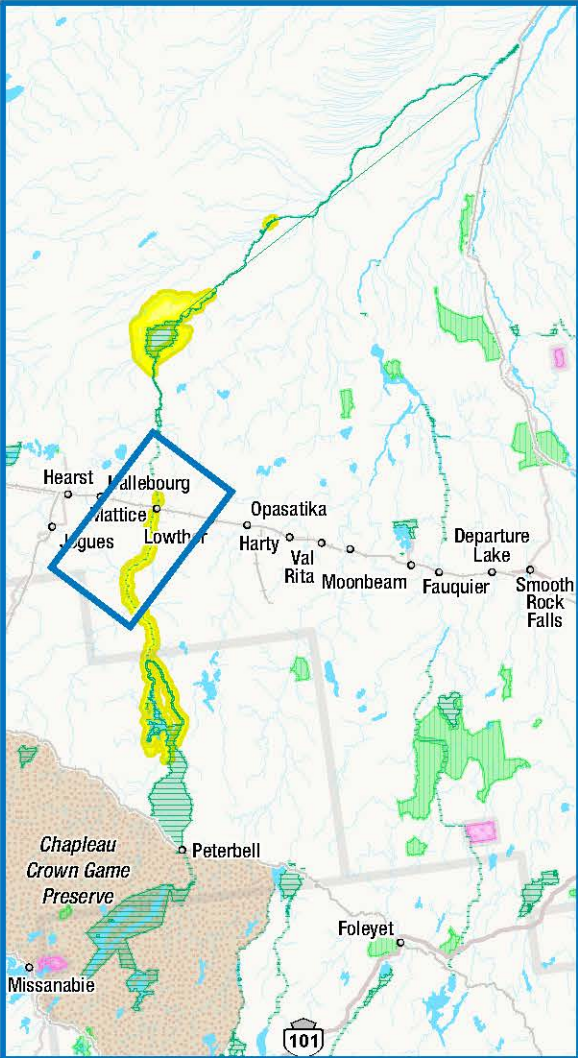
Produced by Ontario Parks. Data Sources: Protected Area Boundary Data - Ontario Parks; Base Data - Land Information Ontario. Projected Coordinate System: NAD 1983 UTM Zone 17N. Geographic Coordinate System: GCS North American 1983.

© King's Printer for Ontario and its licensors 2024.  
Date Published: 07/09/2024.  
MAY NOT BE REPRODUCED WITHOUT PERMISSION. THIS IS NOT A PLAN OF SURVEY.





Missinaibi Provincial Park and proposed additions (Map 3 of 7)

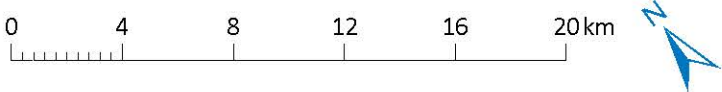
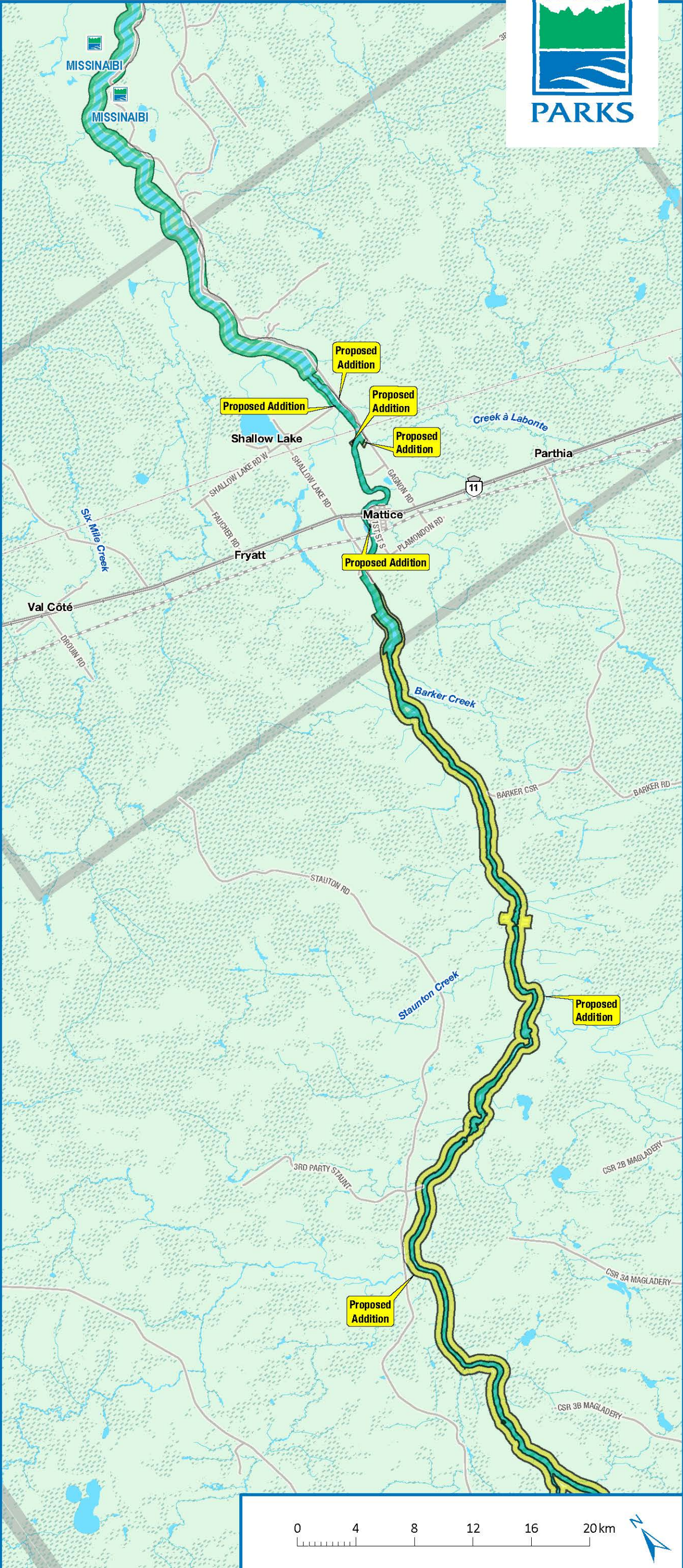


This map should not be relied on as a precise indicator of routes or locations nor as a guide to navigation. The Ontario Ministry of the Environment, Conservation and Parks (MECP) shall not be liable in any way for the use of, or reliance upon, this map or any information on this map.

If you need the information in an alternate format, please send your request to [protected\\_areas@ontario.ca](mailto:protected_areas@ontario.ca).

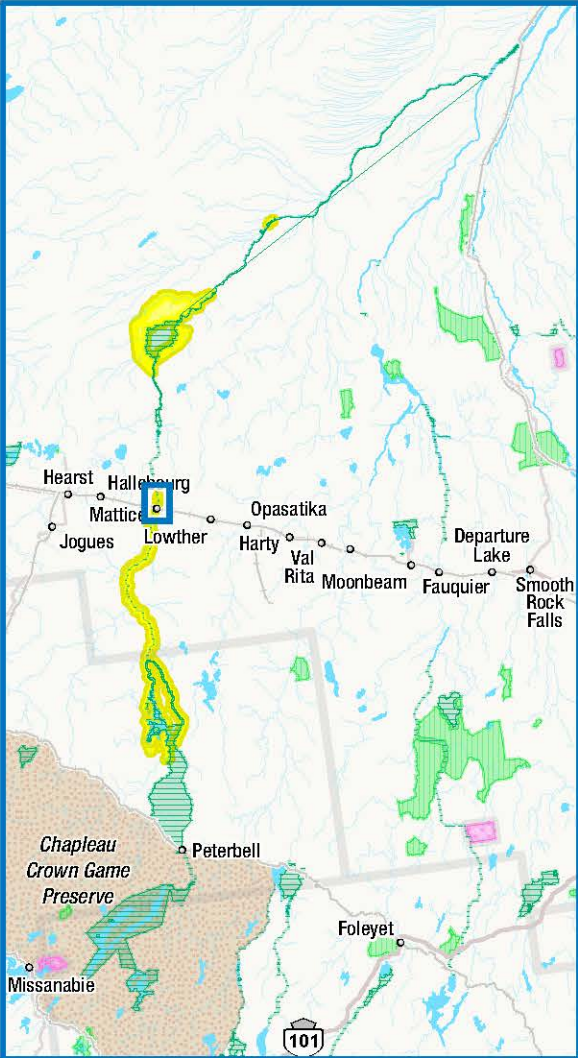
Produced by Ontario Parks. Data Sources: Protected Area Boundary Data - Ontario Parks; Base Data - Land Information Ontario. Projected Coordinate System: NAD 1983 UTM Zone 17N. Geographic Coordinate System: GCS North American 1983.

© King's Printer for Ontario and its licensors 2024.  
Date Published: 07/09/2024.  
MAY NOT BE REPRODUCED WITHOUT PERMISSION. THIS IS NOT A PLAN OF SURVEY.





Missinaibi Provincial Park and proposed additions (Map 4 of 7 - Mattice)



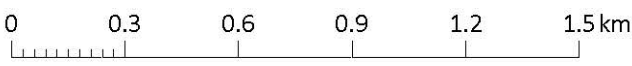
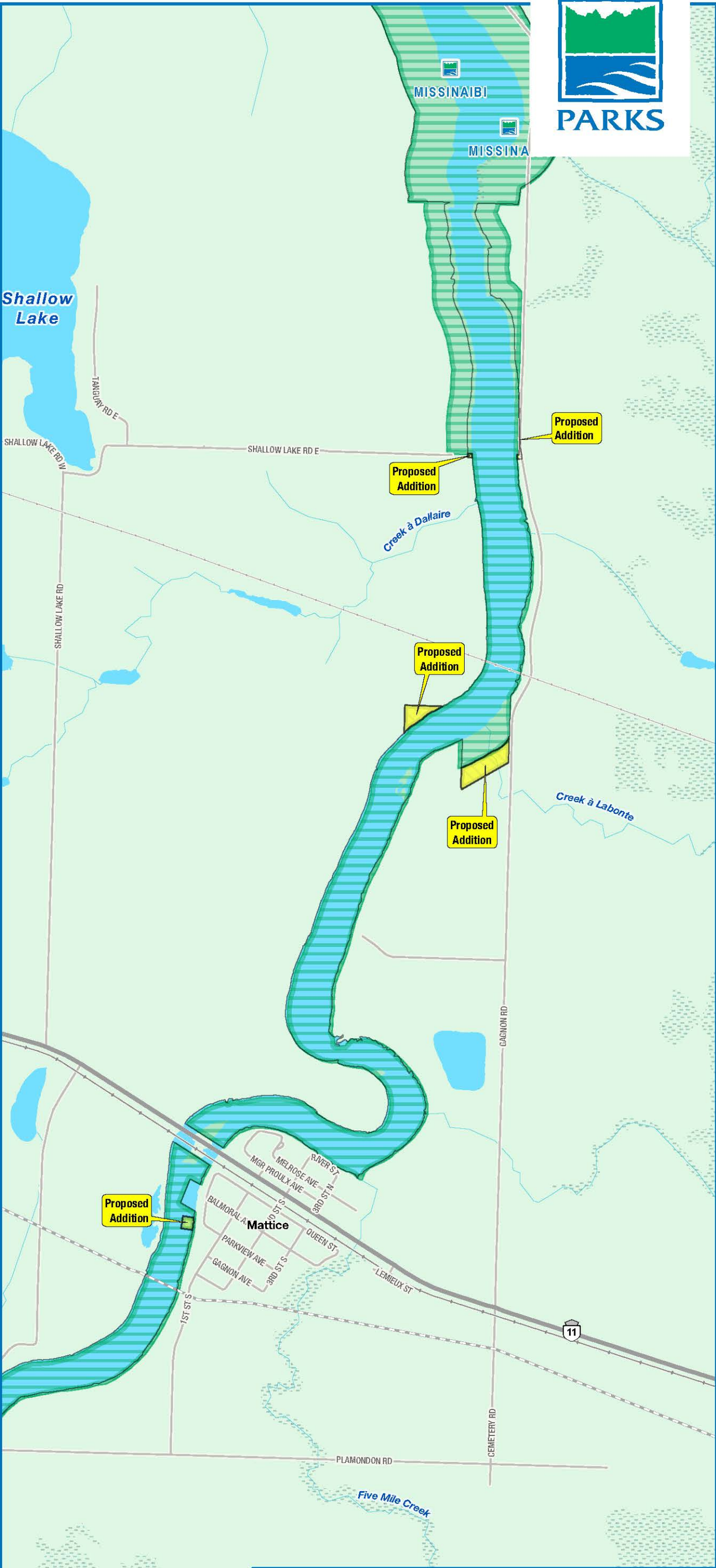
- Proposed Addition
- Roads
- Railway
- Transmission Line
- Pipeline
- Regulated Provincial Park
- Wetland

This map should not be relied on as a precise indicator of routes or locations nor as a guide to navigation. The Ontario Ministry of the Environment, Conservation and Parks (MECP) shall not be liable in any way for the use of, or reliance upon, this map or any information on this map.

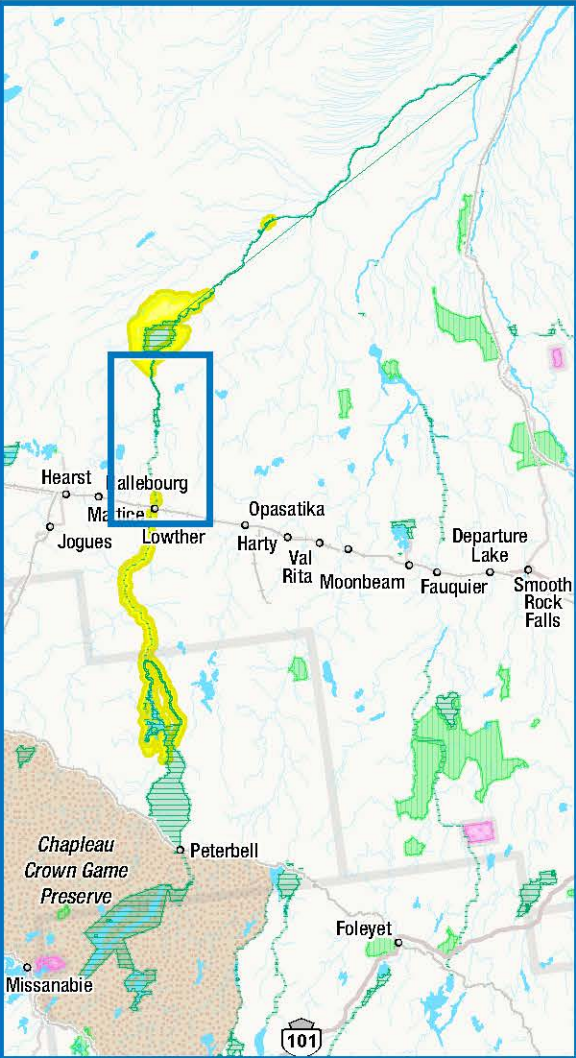
If you need the information in an alternate format, please send your request to [protected\\_areas@ontario.ca](mailto:protected_areas@ontario.ca).

Produced by Ontario Parks. Data Sources: Protected Area Boundary Data - Ontario Parks; Base Data - Land Information Ontario. Projected Coordinate System: NAD 1983 UTM Zone 17N. Geographic Coordinate System: GCS North American 1983.

© King's Printer for Ontario and its licensors 2024.  
Date Published: 07/09/2024.  
MAY NOT BE REPRODUCED WITHOUT PERMISSION. THIS IS NOT A PLAN OF SURVEY.







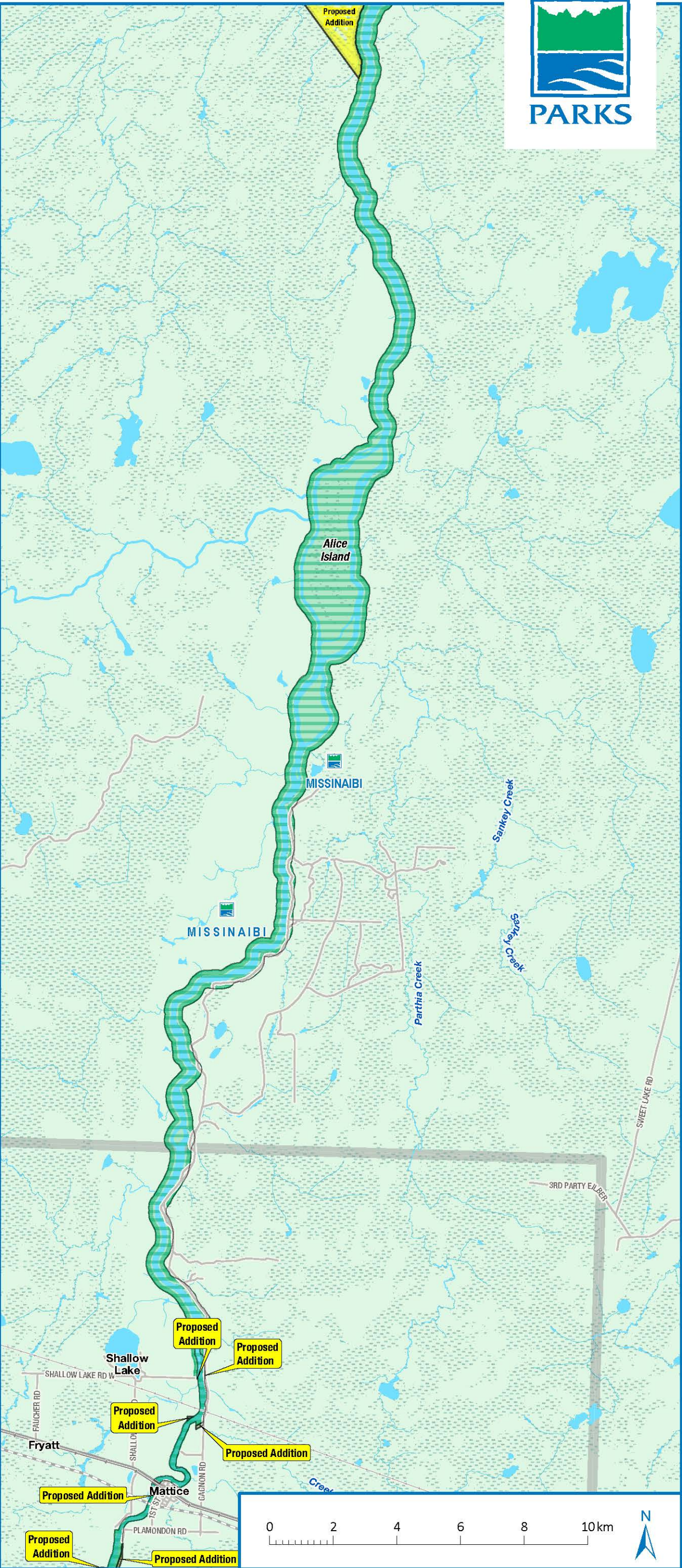
- Proposed Addition
- Roads
- Railway
- Transmission Line
- Pipeline
- Regulated Provincial Park
- Wetland

This map should not be relied on as a precise indicator of routes or locations nor as a guide to navigation. The Ontario Ministry of the Environment, Conservation and Parks (MECP) shall not be liable in any way for the use of, or reliance upon, this map or any information on this map.

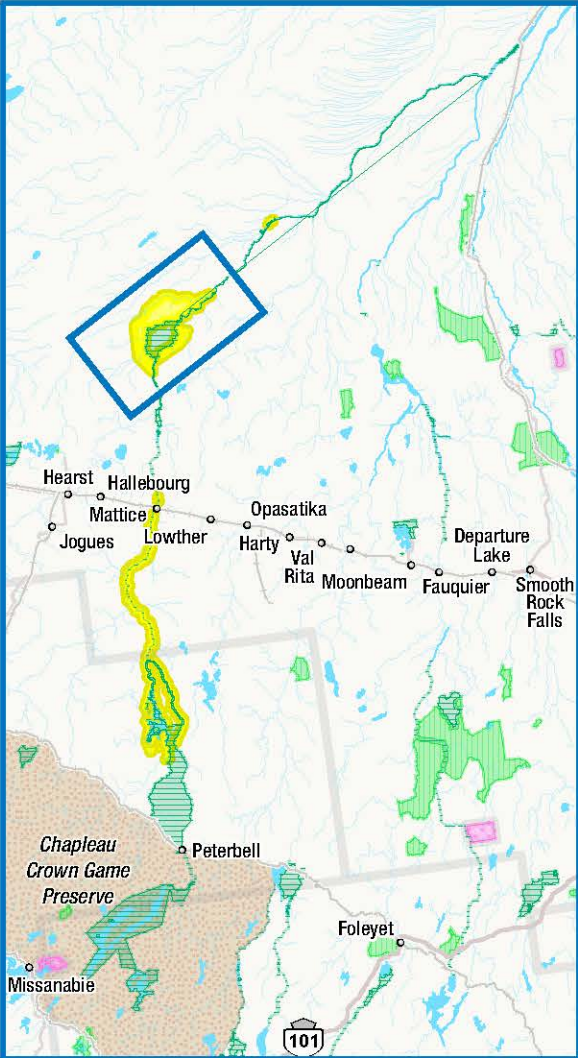
If you need the information in an alternate format, please send your request to [protected\\_areas@ontario.ca](mailto:protected_areas@ontario.ca).

Produced by Ontario Parks. Data Sources: Protected Area Boundary Data - Ontario Parks; Base Data - Land Information Ontario. Projected Coordinate System: NAD 1983 UTM Zone 17N. Geographic Coordinate System: GCS North American 1983.

© King's Printer for Ontario and its licensors 2024.  
Date Published: 07/09/2024.  
MAY NOT BE REPRODUCED WITHOUT PERMISSION. THIS IS NOT A PLAN OF SURVEY.







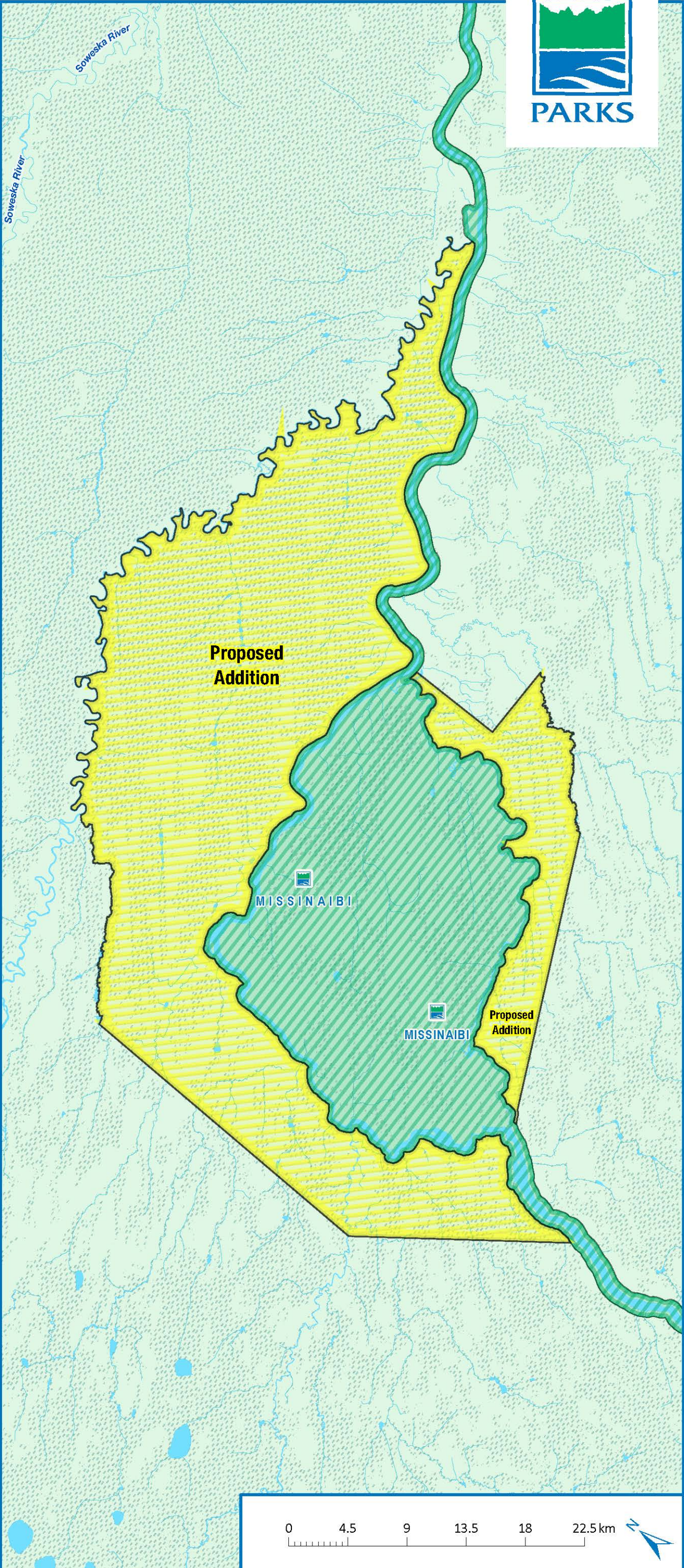
- Proposed Addition
- Regulated Provincial Park
- Wetland

This map should not be relied on as a precise indicator of routes or locations nor as a guide to navigation. The Ontario Ministry of the Environment, Conservation and Parks (MECP) shall not be liable in any way for the use of, or reliance upon, this map or any information on this map.

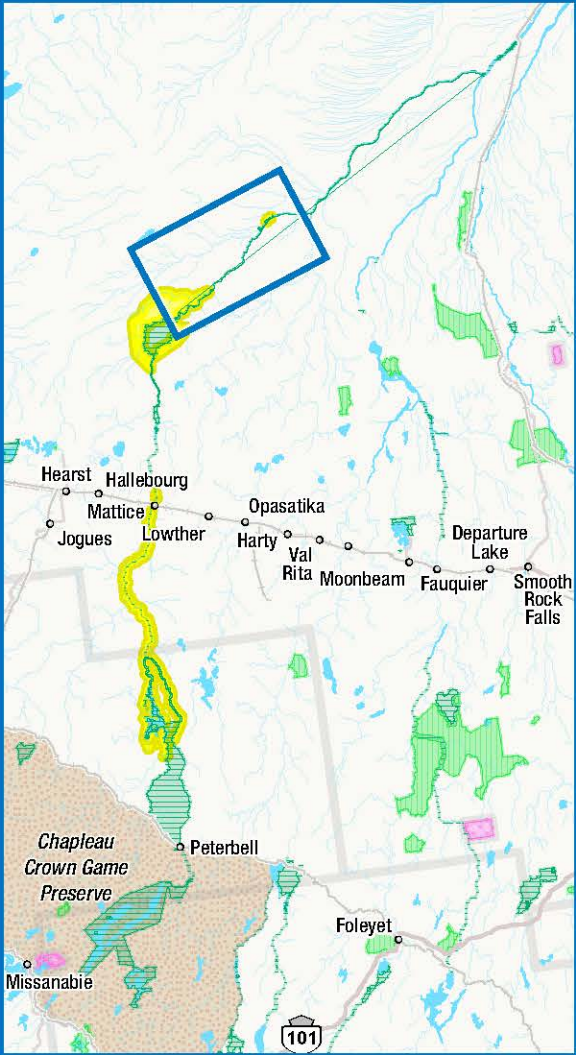
If you need the information in an alternate format, please send your request to [protected\\_areas@ontario.ca](mailto:protected_areas@ontario.ca).

Produced by Ontario Parks. Data Sources: Protected Area Boundary Data - Ontario Parks; Base Data - Land Information Ontario. Projected Coordinate System: NAD 1983 UTM Zone 17N. Geographic Coordinate System: GCS North American 1983.

© King's Printer for Ontario and its licensors 2024.  
Date Published: 07/09/2024.  
MAY NOT BE REPRODUCED WITHOUT PERMISSION. THIS IS NOT A PLAN OF SURVEY.







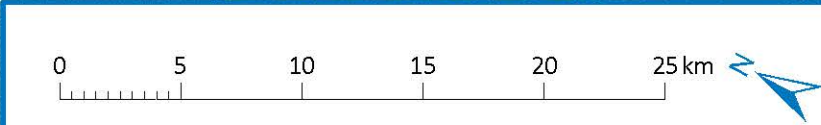
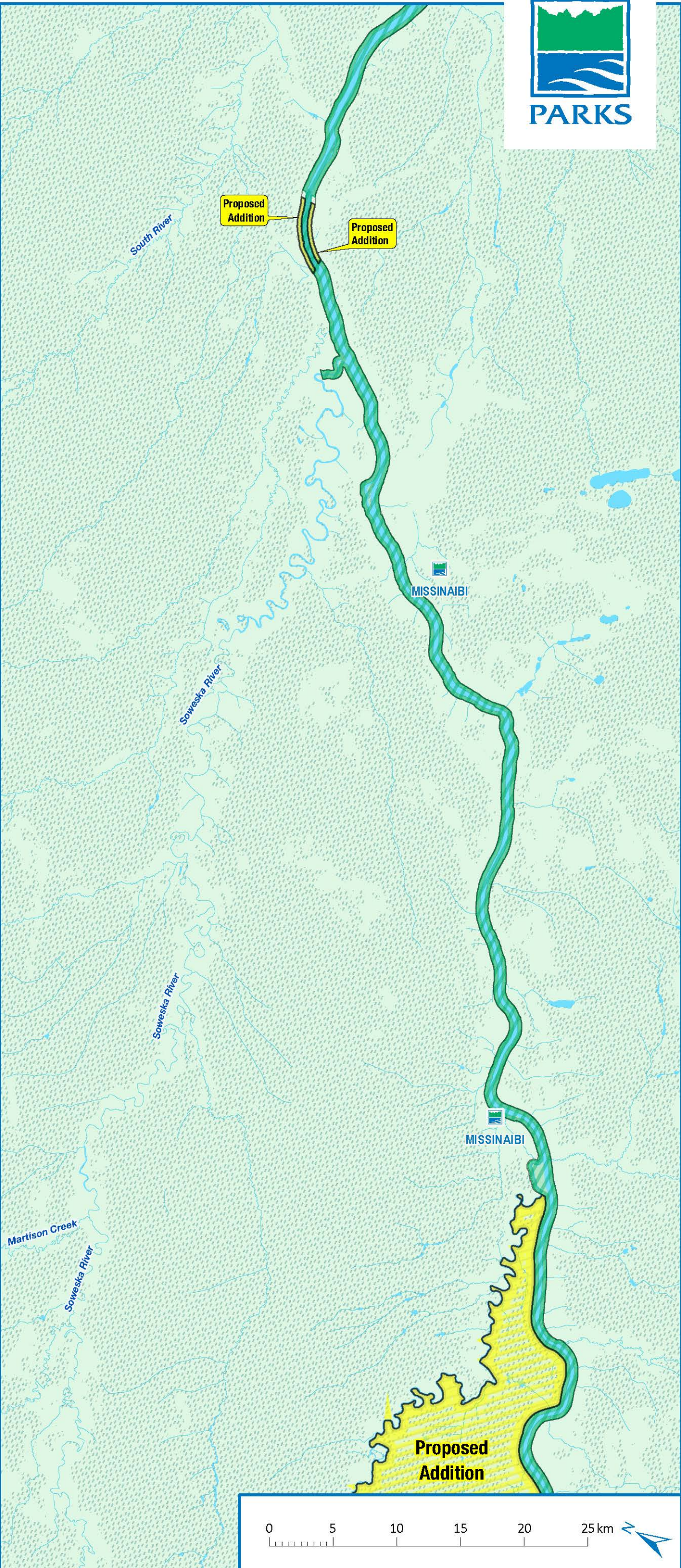
- Proposed Addition
- Regulated Provincial Park
- Wetland

This map should not be relied on as a precise indicator of routes or locations nor as a guide to navigation. The Ontario Ministry of the Environment, Conservation and Parks (MECP) shall not be liable in any way for the use of, or reliance upon, this map or any information on this map.

If you need the information in an alternate format, please send your request to [protected\\_areas@ontario.ca](mailto:protected_areas@ontario.ca).

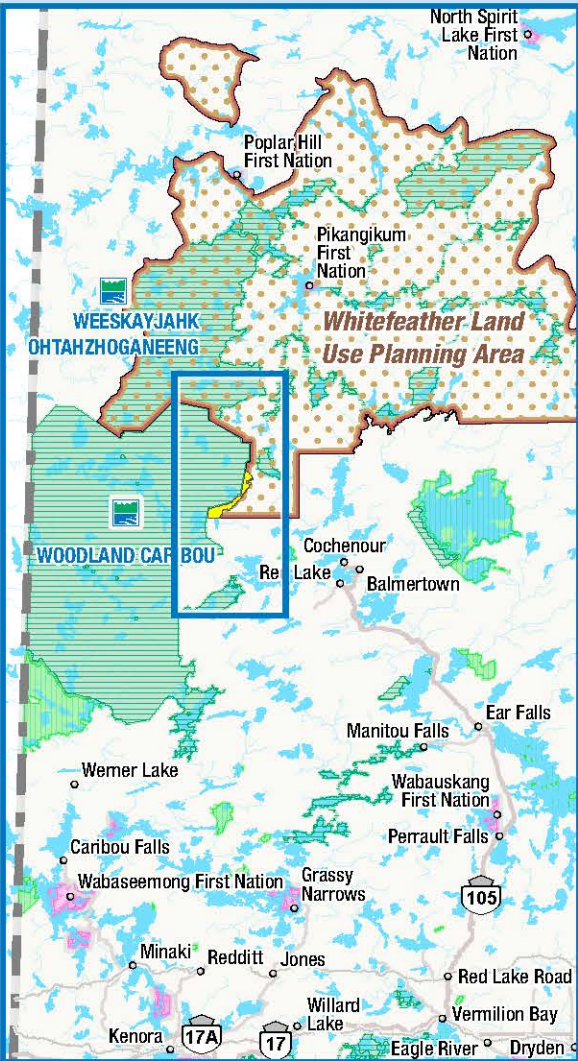
Produced by Ontario Parks. Data Sources: Protected Area Boundary Data - Ontario Parks; Base Data - Land Information Ontario. Projected Coordinate System: NAD 1983 UTM Zone 17N. Geographic Coordinate System: GCS North American 1983.

© King's Printer for Ontario and its licensors 2024.  
Date Published: 07/09/2024.  
MAY NOT BE REPRODUCED WITHOUT PERMISSION. THIS IS NOT A PLAN OF SURVEY.





Woodland Caribou Provincial Park Addition (P2370a)



- Proposed Addition
- Whitefeather Land Use Planning Area
- Roads
- Regulated Provincial Park
- Regulated Conservation Reserve

This map should not be relied on as a precise indicator of routes or locations nor as a guide to navigation. The Ontario Ministry of the Environment, Conservation and Parks (MECP) shall not be liable in any way for the use of, or reliance upon, this map or any information on this map.

If you need the information in an alternate format, please send your request to [protected\\_areas@ontario.ca](mailto:protected_areas@ontario.ca).

Produced by Ontario Parks. Data Sources: Protected Area Boundary Data - Ontario Parks; Base Data - Land Information Ontario. Projected Coordinate System: NAD 1983 UTM Zone 15N. Geographic Coordinate System: GCS North American 1983.

© King's Printer for Ontario and its licensors 2026.  
Date Published: 01/09/2026.  
MAY NOT BE REPRODUCED WITHOUT PERMISSION. THIS IS NOT A PLAN OF SURVEY.

