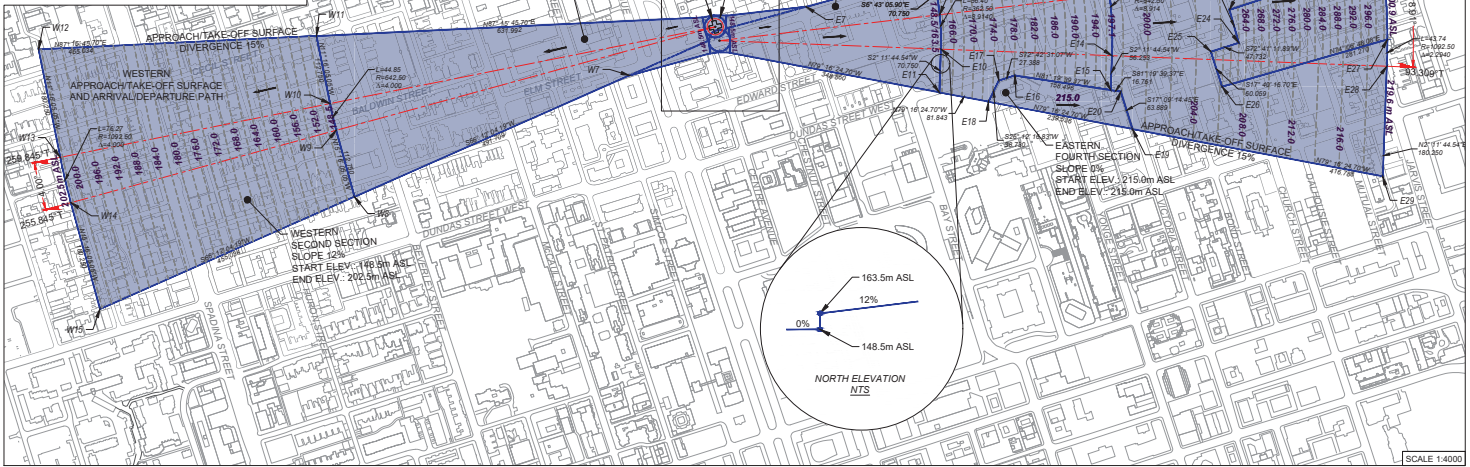


HOSPITAL FOR SICK CHILDREN REFERENCE POINT INFORMATION		
POINT	NORTHING	EASTING
W1	4835039.468	629960.577
W2	4835020.835	629994.289
W3	4835019.646	629994.570
W4	4835001.316	629999.373
W5	4835001.460	630000.789
W6	4834980.698	630003.234
W7	4834944.708	629871.219
W8	4834746.291	629421.320
W9	4834650.061	629391.029
W10	4834898.710	629381.337
W11	4835009.287	629359.306
W12	4834987.556	628904.791
W13	4834810.780	628940.011
W14	4834736.560	628957.512
W15	4834562.672	628004.978
E1	4834981.958	630035.151
E2	4835000.944	630035.879
E3	4835003.662	630035.771
E4	4835022.531	630033.549
E5	4835021.981	630028.878
E6	4835042.570	630029.667
E7	4835057.064	630160.220
E8	4835114.287	630370.125
E9	4835316.023	630376.402
E10	4834987.726	630380.625
E11	4834917.028	630377.915
E12	4835188.755	630643.289
E13	4835076.779	630656.480
E14	4835076.999	630660.420
E15	4834920.787	630658.266
E16	4834944.688	630501.581
E17	4834936.545	630475.430
E18	4834901.796	630458.327
E19	4834857.213	630593.878
E20	4834913.260	630674.034
E21	4835308.436	631082.303
E22	4835133.962	631102.853
E23	4835052.226	630852.594
E24	4834997.926	630887.701
E25	4834963.721	630922.132
E26	4834926.456	630840.363
E27	4835003.489	631110.890
E28	4834959.758	631110.089
E29	4834779.540	631103.183
E30	4835120.424	631103.390
SA1	4835024.254	630011.452
SA2	4835001.615	630018.392
SA3	4835043.325	630009.932
SA4	4834982.572	630019.143



MAP NO. 391

Map filed at the office of the Ontario Ministry of Municipal Affairs and Housing, 777 Bay St., Toronto, Ontario,

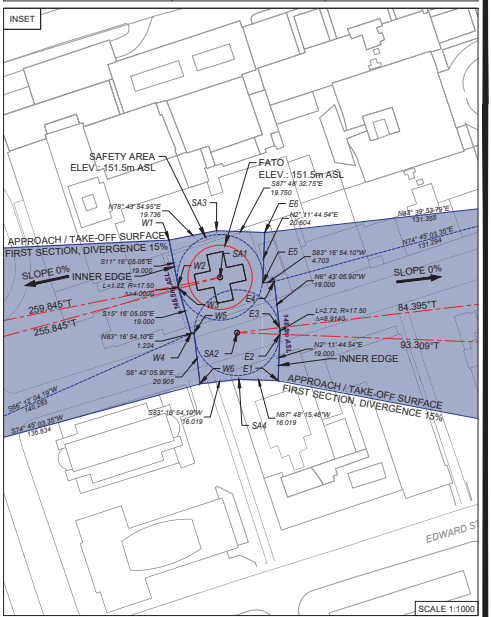
Planning Act

Ontario Regulation: 161/26

Date: May 28, 2026

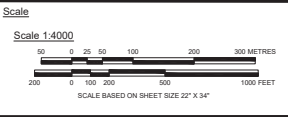
Original Regulation Signed By: Minister of Municipal Affairs and Housing

HOSPITAL FOR SICK CHILDREN HELIPORT (CNWB)		
HELIPORT CLASSIFICATION	H1	DAY/NIGHT VFR
HELIPORT PHYSICAL CHARACTERISTICS		
FATO WIDTH	26.25m	
ELEVATION	151.5m ASL	
FLIGHT PATH PROTECTIONS		
DATA	EASTERN ARR'DEEP PATH	WESTERN ARR'DEEP PATH
GEOMETRIC CENTRE	POINT-IN-SPACE	STANDARD
SAFETY AREA WIDTH	35.0m	
INNER EDGE ELEVATION	148.5m ASL	148.5m ASL
FLIGHT PATH ORIGIN LOCATION (WGS84)		
NORTHING	4835001.615	4835024.254
EASTING	630018.392	630011.452
LATITUDE	N43° 39' 23.9276"	N43° 39' 24.6655"
LONGITUDE	W79° 23' 15.2861"	W79° 23' 15.5761"
FLIGHT PATH BEARINGS (FROM)		
GRID NORTH	83.282° TO 92.196°	254.732° TO 258.732°
TRUE NORTH	84.395° TO 93.309°	255.845° TO 259.845°
OBSTACLE LIMITATION SURFACES - APPROACH/TAKE-OFF SURFACE		
DIVERGENCE	15%	15%
FIRST SECTION LENGTH	345.0m	625.0m
FIRST SECTION SLOPE	0%	0%
SECOND SECTION LENGTH	260.0m	450.0m
SECOND SECTION SLOPE	12% [1:8.33]	12% [1:8.33]
THIRD SECTION LENGTH	450.0m	NA
THIRD SECTION SLOPE	5% [1:20]	NA
FOURTH SECTION LENGTH	238.5m	NA
FOURTH SECTION SLOPE	0%	NA
FIFTH SECTION LENGTH	288.5m	NA
FIFTH SECTION SLOPE	16% [1:6.25]	NA
OVERALL LENGTH	1975.0m	1075.0m



Legend
 OBSTACLE LIMITATION SURFACE (OLS)
 OLS ELEVATION CONTOUR (m ASL)
 FLIGHT PATH PROJECTED CENTERLINE

Notes
 1. COORDINATES COMPUTED FROM SURVEY DATED MARCH 18, 2016.
 2. COORDINATES UNLESS OTHERWISE SPECIFIED ARE IN WGS84 (TRF 2008) UTM Z17 AND ELEVATIONS IN REFERENCE TO GDSN1985.
 3. GRID HEIGHT COMPUTED AS 37.14 METERS RELATIVE TO WGS84.
 4. AVIA INC. DOES NOT TAKE RESPONSIBILITY FOR THE ACCURACY OF UNDERLYING CADASTRAL DATA.
 5. UNDERLYING CADASTRAL DATA SUBJECT TO CHANGE.



SickKids
 THE HOSPITAL FOR SICK CHILDREN

Client: THE HOSPITAL FOR SICK CHILDREN

AVIA-NG
 AIRPORT CONSULTANTS

Consultant: AVIA NG INC.

GRID NORTH

Location: TORONTO, ONTARIO

Title: HOSPITAL FOR SICK CHILDREN HELIPORT ENHANCED FLIGHT PATH PROTECTIONS O. REG. 10/24 WITH METES AND BOUNDS

Date: 22-0118-00

Amendment No.:

Avia NG Project No.: 22-0118-00

Map No.: 391