

*A presentation in  
objection to The  
Hallman Pit and  
for the Protection  
of Our Community*

*Christina Harnack    January 2020*



## Council Accountability



A A A | 🖨️ | ➦ SHARE

Home / ... / Council and Committees / Council / Council Accountability

The Council of The Township of Wilmot acknowledges that it is responsible to provide good government in an accountable and transparent manner by:

- Encouraging public access and participation so that decision making is responsive to the needs of the citizens and receptive to their opinions;
- Delivering high quality services to our residents and business owners, and;
- Promoting the efficient use of public resources.

Accountability, transparency and openness are achieved through the municipality adopting measures ensuring, to the best of its ability, that all activities and services are undertaken using a process that is open and accessible.

### Quick Links ▾

- A-Z Services
- Applications, Licences and Permits
- Council and Committees
- News and Public Notices
- Message from the Mayor
- Taxes
- What We Do



I object to the Hallman pit for several reasons.

I am concerned about:

- » Our Water Safety
- » Toxic Pollution
- » Contamination
- » Negative Effects on the Environment
- » Climate Change

*Wilmot Region-Our community for generations to come*







TOWNSHIP  
OF WILMOT

## MEDIA RELEASE

### **Wilmot Township Council Approves Climate Emergency Declaration**

**Baden, ON** - At the September 23rd Council meeting, the Township of Wilmot took another solid step forward in continuing its efforts to promote sustainability by joining government agencies in the declaration of a climate emergency.

Over the past few months, Kai Reimer-Watts and Andreas Fuentes from the Climate Emergency Declaration Group Waterloo Region have been working with area municipalities on formulating resolutions in support of the Climate Emergency Declaration.

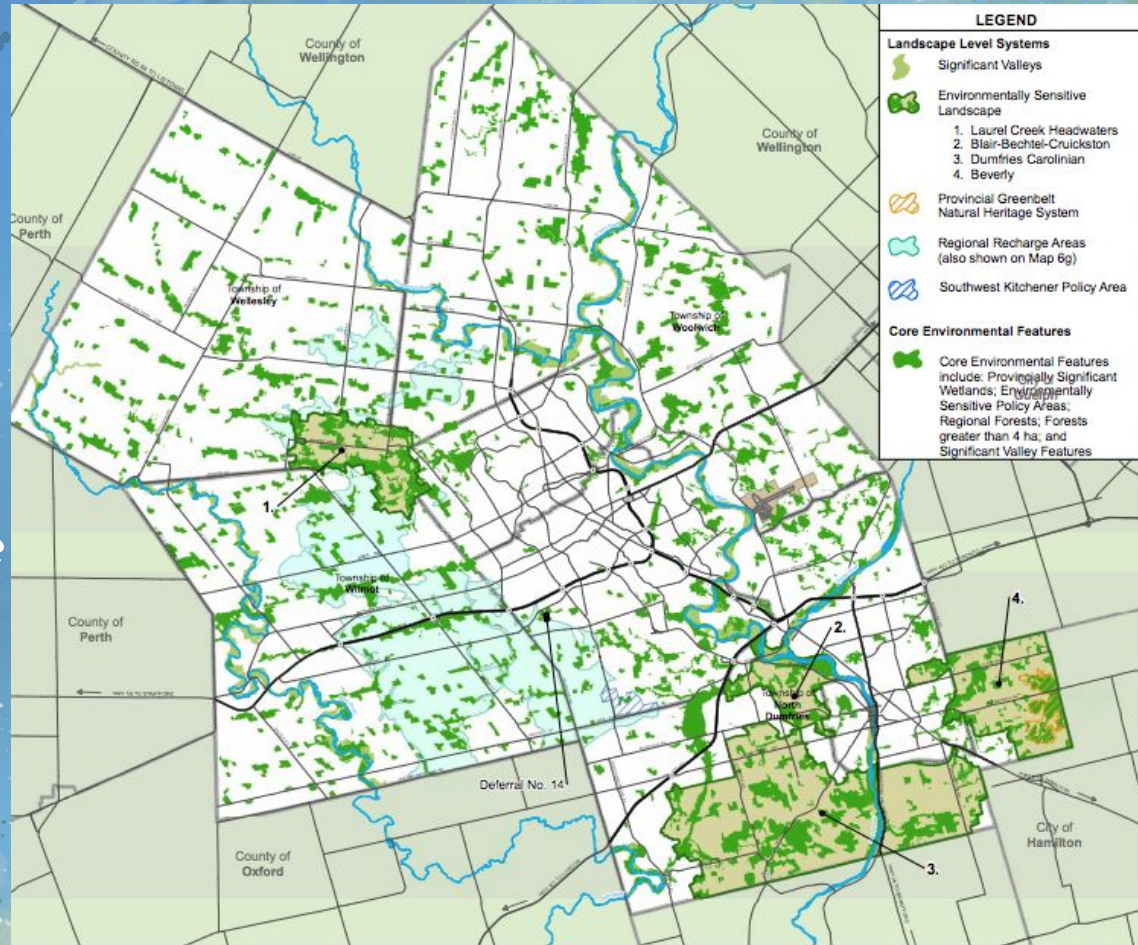
Data provided by Mr. Reimer-Watts and Mr. Fuentes indicates that municipalities are significant contributors to climate change, consuming more than 2/3 of the world's energy and accounting for more than 70% of its carbon emissions.

The Township of Wilmot has an absolute Green House Gas (GHG) emissions target reduction of 25% from 2012 levels by 2027, and has already reduced its GHG emissions by approximately 19.6% or 330 tons since 2012.



# Regional Official Plan:

Wilmot Region is identified as Regional Recharge Area

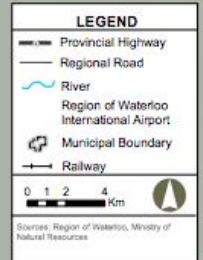


Region of Waterloo

## Regional Official Plan SHAPING OUR FUTURE

### MAP 4

### GREENLANDS NETWORK

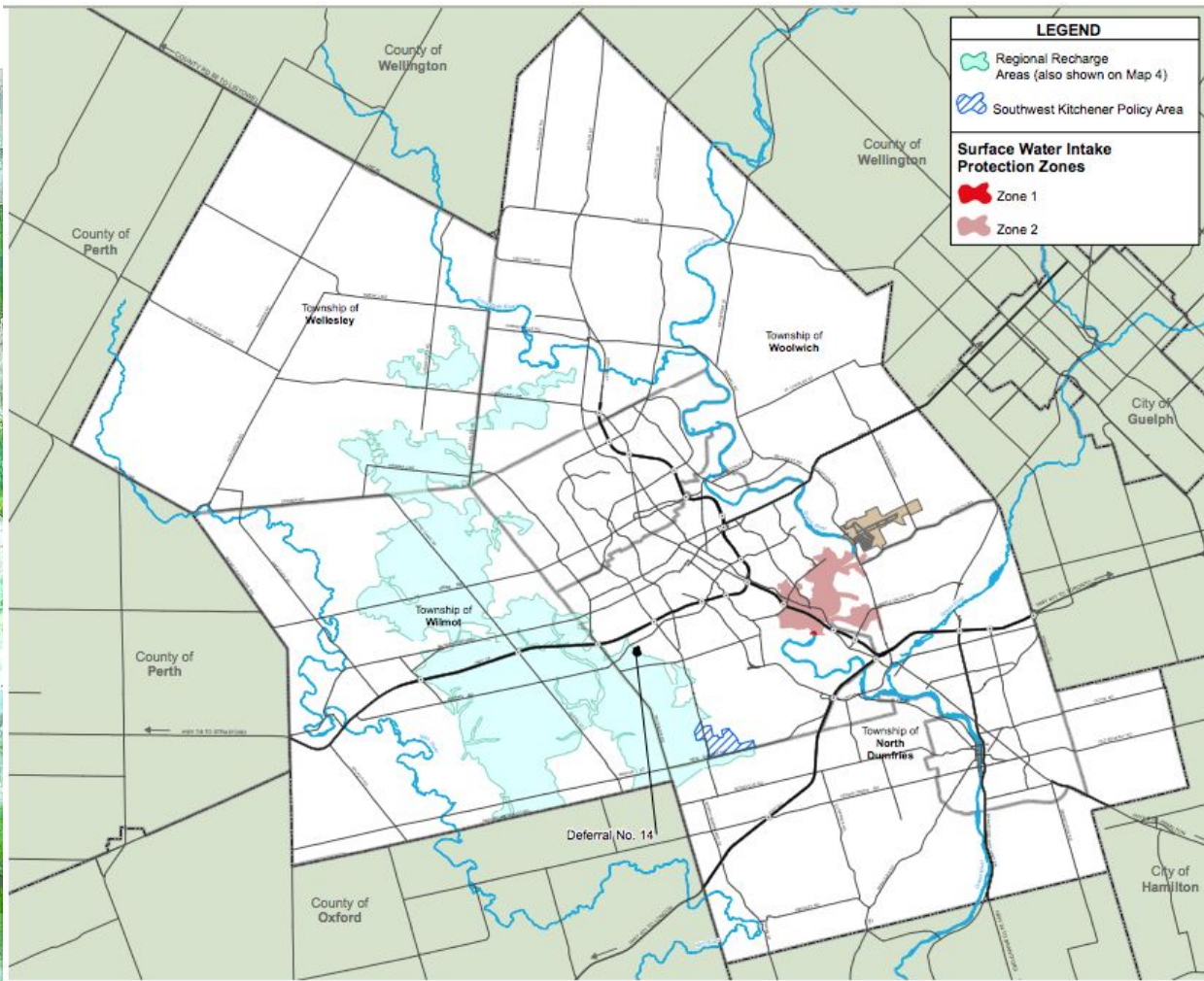


2015

Note: Permanent and intermittent watercourses are identified in the Technical Appendix to Landscape Level Systems and Core Environmental Features

Note: This map forms part of the Official Plan of the Region of Waterloo and must be read in conjunction with the policies of this Plan.





Region of Waterloo

## Regional Official Plan SHAPING OUR FUTURE

### MAP 6g OTHER SOURCE WATER PROTECTION AREAS

#### LEGEND

- Provincial Highway
- Regional Road
- River
- Region of Waterloo International Airport
- Municipal Boundary
- Railway

0 1 2 4 Km



Sources: Region of Waterloo

2015

Note: This map forms part of the Official Plan of the Regional Municipality of Waterloo and must be read in conjunction with the policies of this Plan.





# Regional Official Plan

## Chapter 8

## Source Water Protection

### 8. Source Water Protection

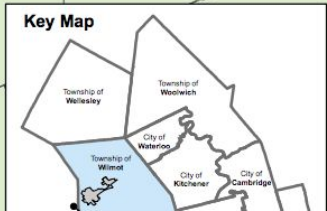
Waterloo Region is unique in Ontario in that it is the largest urban municipality to rely almost exclusively on groundwater supplies for its drinking-water. Approximately three quarters of all the region's drinking-water comes from the over one hundred municipal wells, many of which tap into rich aquifers sustained by the Waterloo Moraine. The remaining quarter of the region's drinking-water is drawn from the Grand River. Protecting these valuable water resources from contamination and from land uses that could hinder groundwater recharge is essential to maintaining human health, economic prosperity and a high quality of life in the region.

The *Province* has recently emphasized the importance of protecting the *municipal drinking-water supply system* by way of land use planning decisions, through changes to the Provincial Policy Statement. The importance of protecting the *municipal drinking-water supply system* is also underscored by the enactment of the Safe Drinking Water Act and the Clean Water Act. The Region's role in implementing Provincial policy, places an obligation on the Region to make land use planning decisions consistent with the Provincial Policy Statement's direction to protect the quality and quantity of drinking-water resources in the region, and to limit *development* and *site alteration* that could adversely affect drinking-water supplies drawn from both the Grand River and groundwater resources. Waterloo Region's continued long-term reliance on groundwater resources necessitates a high priority be placed on protecting this valuable resource through land use management.

Def.  
No. 1



## 9



**TOWNSHIP OF  
WILMOT  
SOURCE WATER  
PROTECTION  
AREAS**





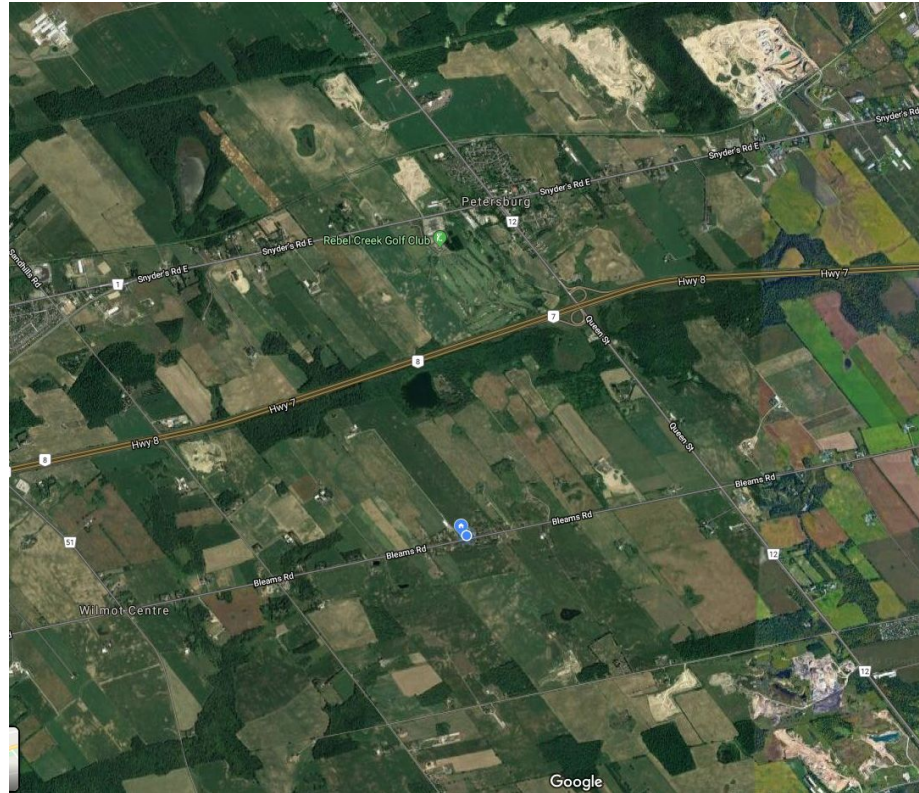
*“The Township of Wilmot has an absolute Greenhouse Gas (GHG) emissions target reduction of 25% from 2012 levels by 2027”.*

*How will rezoning this property for industrial extraction help the Township meet this target?  
Or rather, how will this gravel pit prevent the Township from meeting this target?*





## *Satellite image of some of Wilmot Region's existing Gravel Pits*



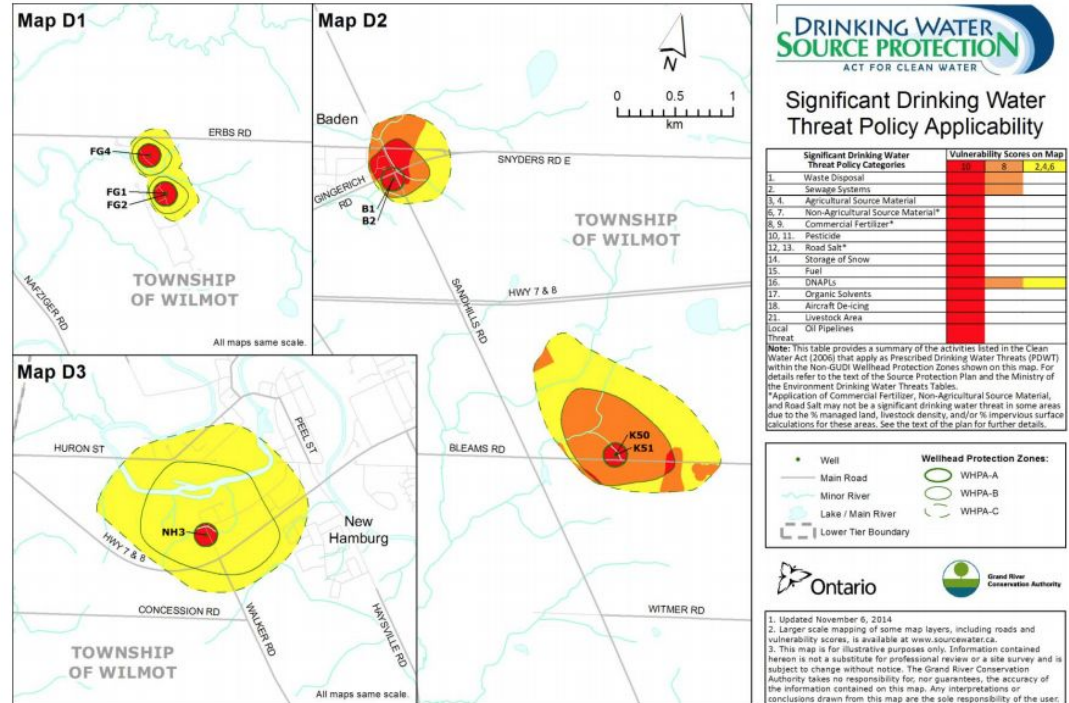


# Drinking Water Source Protection Plan

## Grand River Source Protection Plan

## Volume II – Approved

### 10.10 Schedule E: Regional Municipality of Waterloo: Township of Wilmot Well Fields Maps D1, D2 and D3

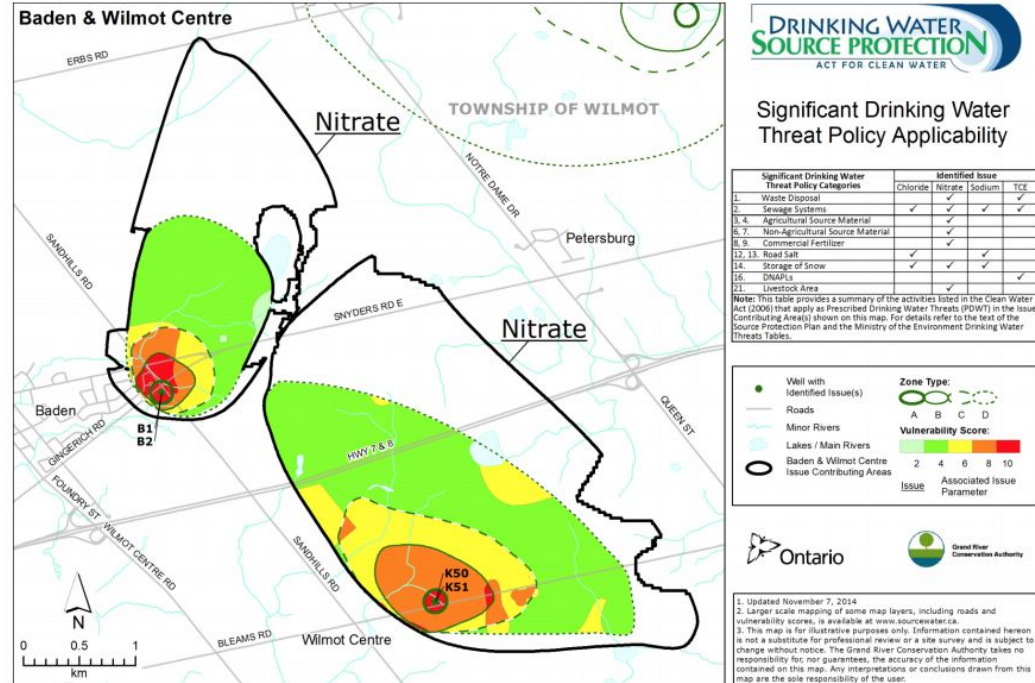


# Significant Drinking Water Threat Policy Applicability

Grand River Source Protection Plan

Volume II – Approved

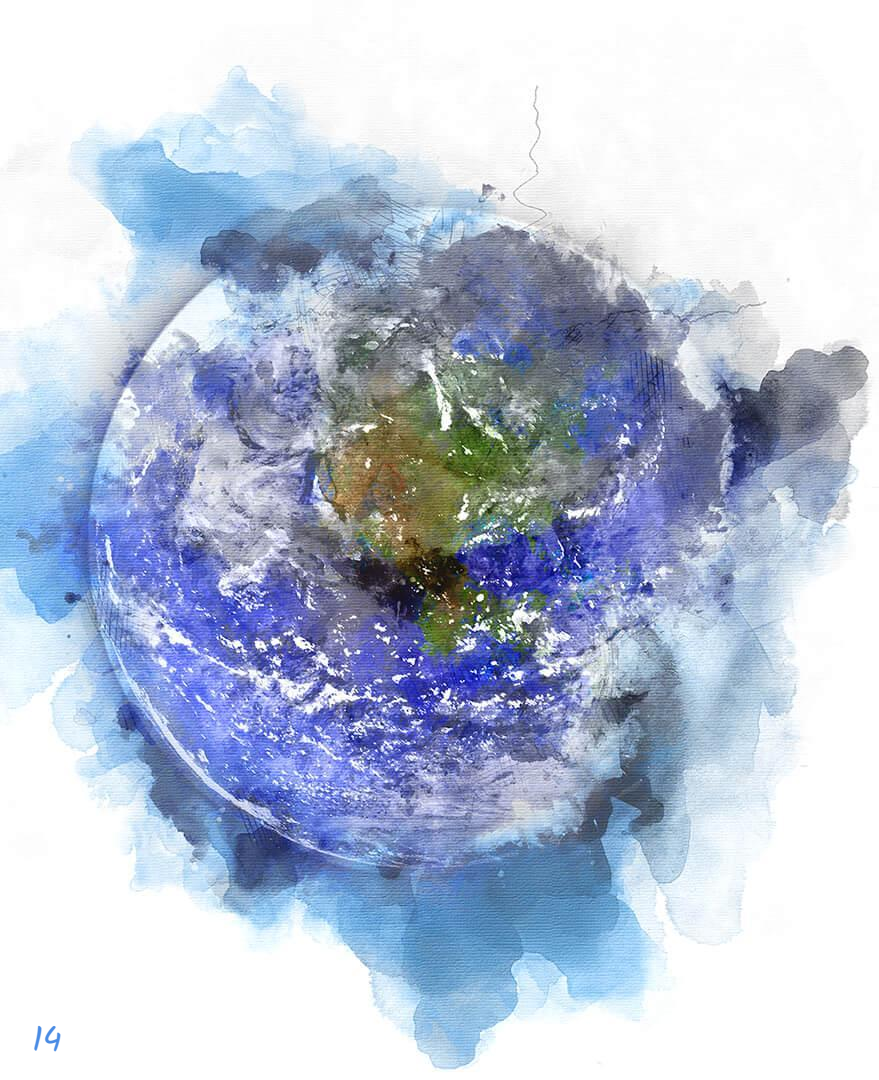
## 10.21 Schedule P: Regional Municipality of Waterloo: Baden and Wilmot Centre Issue Contributing Areas



November 26, 2015

Regional Municipality of Waterloo - Section 10-66





The site for the Hallman pit is currently zoned as “Prime agriculture” and is protected under the “Protected Countryside Policy”, the “Clean Water Act”, and “Source (Water) Protection Policy”.

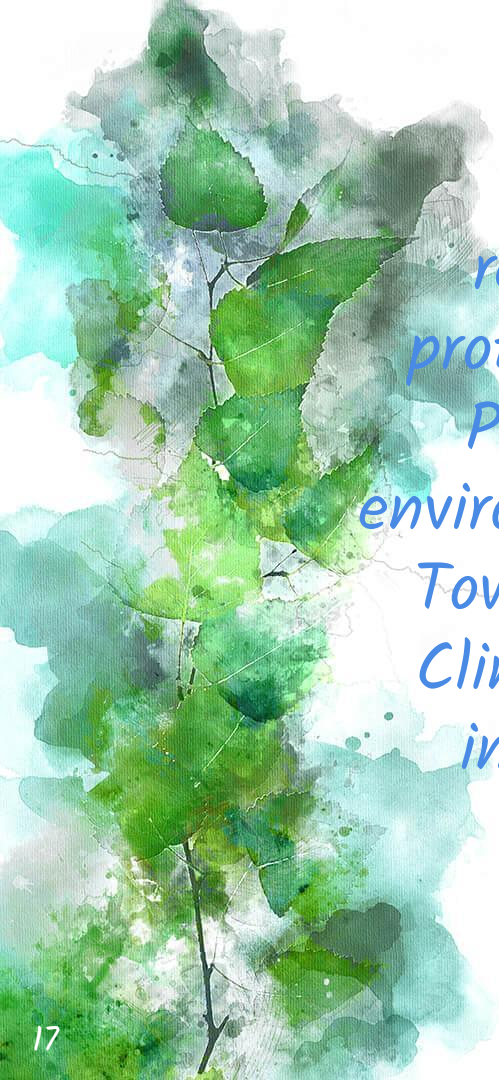
Mr. Esbaugh cannot prove beyond a reasonable doubt that he will have no negative impact on our water, environment, roads, mental health, community or on Greenhouse Gas Emissions. The approval of this rezoning has great stakes and is not worth the risks.





I am asking that you be bold, and take action on climate change in very tangible ways. In this case, this is not allowing 1922 Witmer road to be rezoned for aggregate extraction. I am asking that you be accountable, creative, responsible, curious, and a leader towards a healthier and more sustainable future for Wilmot region.





We are able to make responsible decisions in protecting our Source Water Protected areas and our environment in response to the Township's declaration of a Climate Emergency. This is important today and for generations to come.





The background is an abstract, painterly composition. It features a mix of deep blue, teal, and light green washes. Scattered throughout are numerous small, white and black dots and speckles, giving it a textured, starry, or splattered appearance. The overall effect is ethereal and artistic.

*Thank you*