

Cc: Bill Robertson <billrobertson@orilliahomes.ca>
Subject: RE: 1997 old barrie rd e (Roll # 434601000511100)

At present, none of the in-effect or known forthcoming changes stemming from Bill 23 would create any new severance opportunities. The Settlement Area boundary of Rugby (blue line below) remains unchanged.

Derek



Derek Witlib
Acting Director, Development Services

CURRENT SETTLEMENT
OUTLINED IN BLUE.

Proposed Sublot out
ADJUSTMENT



Features

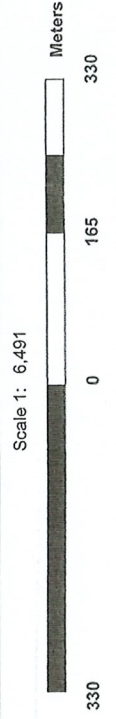
	LSRCA Watershed Boundary
	LSPW Watershed Boundary
	Lot and Concession
	Watercourse
	Lake Simcoe
	Roads
	Hwy 400 Series
	Highway, Arterials
	Local Road
	Railway
	Lower Tier Municipality

Printed On:
2/23/2018

WGS_1984_Web_Mercator_
Auxiliary_Sphere

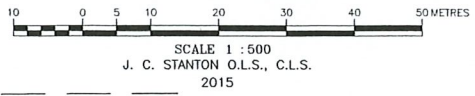
Mapped By:

This product was produced by the Lake Simcoe Region Conservation Authority and some information depicted on this map may have been compiled from various sources. While every effort has been made to accurately depict the information, the mapping is not intended to be used for legal purposes. For more information, please contact the LSRCA GIS Services DRAFT, printed 2017. © LAKE SIMCOE REGION CONSERVATION AUTHORITY, 2017. All Rights Reserved. The information on this map is derived from various sources including the Lower Tier Municipalities. Wetlands are © Queens Printer for Ontario. Reproduced with Permission, 2017. The Current Regulation Limit and Boundary data sets are derived products from several datasets. Orthophotography 2006, 2011, 2016. © J.D. Barnes Limited.



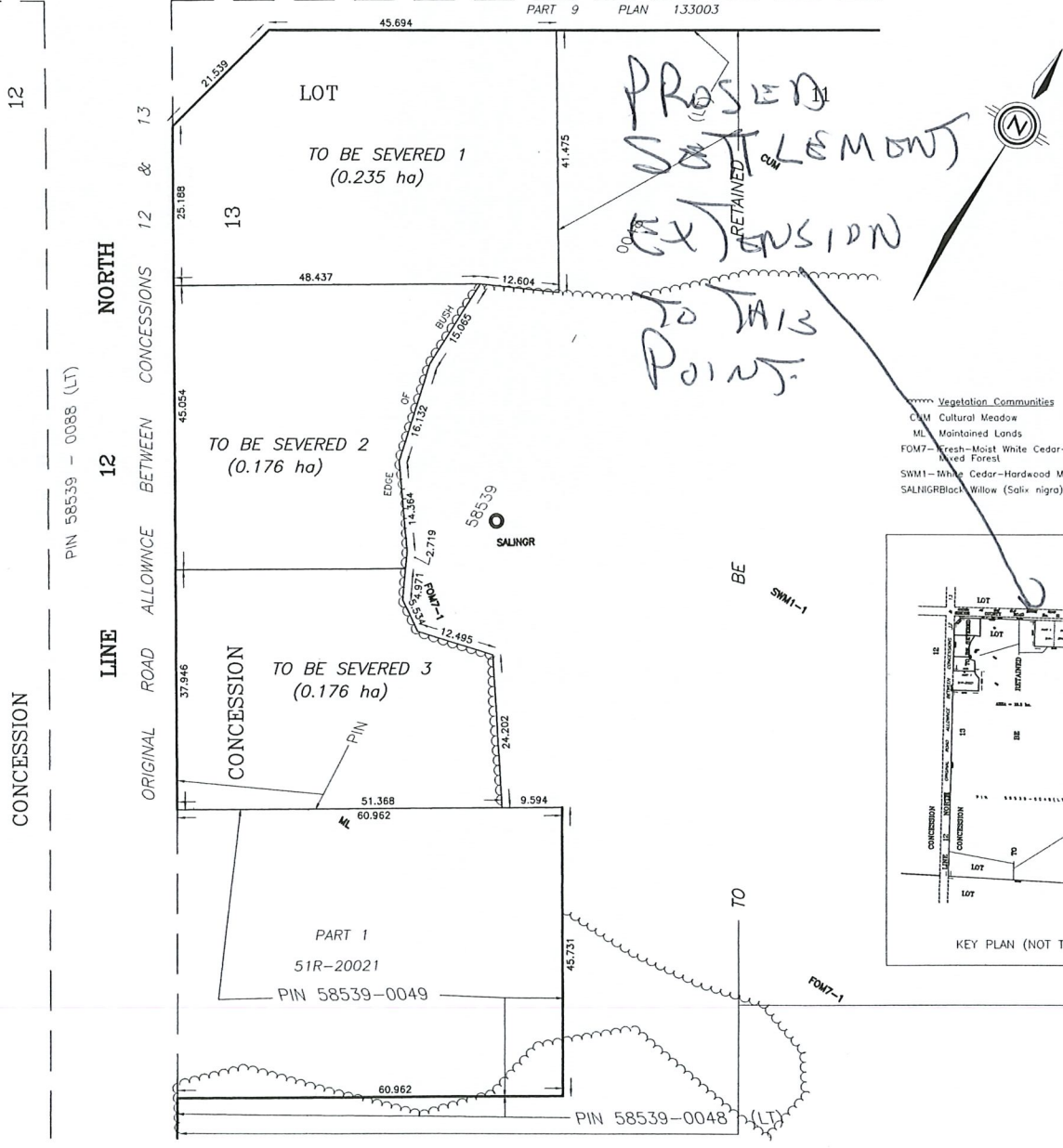
ACTUAL

SKETCH FOR SEVERANCE
OF PART OF THE W-1/2 OF THE W-1/2
OF LOT 11, CONCESSION 13
(GEOGRAPHIC TOWNSHIP OF ORO)
TOWNSHIP OF ORO-MEDONTE
COUNTY OF SIMCOE

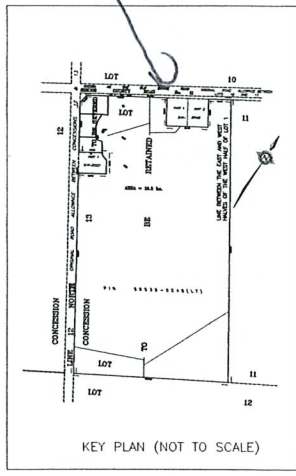


LOT 10
ORIGINAL ROAD ALLOWANCE BETWEEN LOTS 10 AND 1
KNOWN AS THE OLD BARRIE ROAD
SIMCOE COUNTY ROAD No. 11
PIN 58538 - 0002 (LT)

PART 9 PLAN 133003



- Vegetation Communities
- CM Cultural Meadow
- ML Maintained Lands
- FOM7- Fresh-Moist White Cedar-Sugar Maple Mixed Forest
- SWM1- White Cedar-Hardwood Mixed Swamp
- SALNIGR Black Willow (Salix nigra)



C-5756

DISTANCES SHOWN ON THIS PLAN ARE IN METRES AND CAN BE CONVERTED TO FEET BY DIVIDING BY 0.3048

© C.T. STRONGMAN SURVEYING LTD. O.L.S. NO PERSON MAY COPY, REPRODUCE, DISTRIBUTE OR ALTER, THIS PLAN IN WHOLE OR IN PART WITHOUT THE WRITTEN PERMISSION OF C.T. STRONGMAN O.L.S.

C.T. STRONGMAN SURVEYING LTD.
Ontario Land Surveyors
4145 Burnside Line
Severn, Ontario L3V-0W1
Telephone (705) 329-0765
Fax (705) 329-0424
email: info@ctssurveys.ca
SEVERN - ONTARIO

AC15 File: 10245 SKETCH C-5756